



# SZABO SCANDIC

Part of Europa Biosite

## Produktinformation



Forschungsprodukte & Biochemikalien



Zellkultur & Verbrauchsmaterial



Diagnostik & molekulare Diagnostik



Laborgeräte & Service

Weitere Information auf den folgenden Seiten!  
See the following pages for more information!



### Lieferung & Zahlungsart

siehe unsere [Liefer- und Versandbedingungen](#)

### Zuschläge

- Mindermengenzuschlag
- Trockeneiszuschlag
- Gefahrgutzuschlag
- Expressversand

### SZABO-SCANDIC HandelsgmbH

Quellenstraße 110, A-1100 Wien

T. +43(0)1 489 3961-0

F. +43(0)1 489 3961-7

[mail@szabo-scandic.com](mailto:mail@szabo-scandic.com)

[www.szabo-scandic.com](http://www.szabo-scandic.com)

[linkedin.com/company/szaboscandic](https://www.linkedin.com/company/szaboscandic) 

# Anti-Phosphoserine Antibody

Rabbit Anti-Phosphoserine Polyclonal  
Catalog No. SPC-149



Discovery through partnership | Excellence through quality

## Overview

---

### Product Name

Phosphoserine Antibody

### Description

Rabbit Anti-Phosphoserine Polyclonal

### Species Reactivity

Species Independent

### Applications

WB, IHC, ICC/IF, IP, ELISA

### Antibody Dilution

WB (1:500), ICC/IF (1:50), ELISA (1:250), IP (1:100); optimal dilutions for assays should be determined by the user.

### Host Species

Rabbit

### Immunogen

Phosphoserine conjugated to KLH, and phosvitin mixture

### Concentration

0.25 mg/ml

### Conjugates

Alkaline Phosphatase, APC, ATTO 390, ATTO 488, ATTO 565, ATTO 594, ATTO 633, ATTO 655, ATTO 680, ATTO 700, Biotin, FITC, HRP, PE/ATTO 594, PerCP, RPE, Streptavidin, Unconjugated

## Properties

---

### Storage Buffer

PBS, 50% glycerol, 0.09% sodium azide

### Storage Temperature

-20°C, 4°C

### Shipping Temperature

Blue Ice or 4°C

### Purification

Protein A purified

### Clonality

Polyclonal

### Specificity

Detects proteins phosphorylated on serine residues. Does not cross-react with phosphotyrosine.

### Cite This Product

Rabbit Anti- Phosphoserine Polyclonal (StressMarq Biosciences Inc., Victoria BC CANADA, Catalog # SPC-149)

### Certificate Of Analysis

2 µg/ml of SPC-149 was sufficient for detection of phosphorylation signal in western blot analysis using human MMRU cells treated with 0.1 µM okadaic acid.

## Biological Description

### Alternative Names

Phospho-ser Antibody, pS Antibody, pSer Antibody, Phospho-serine antibody

### Research Areas

Cell Signaling, Phosphorylation, Post-translational Modifications

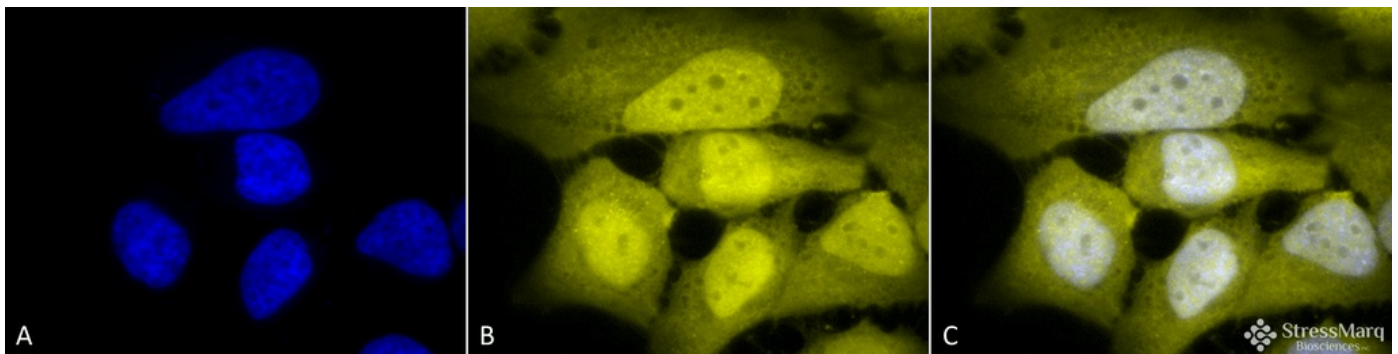
### Scientific Background

Protein phosphorylation is an important posttranslational modification that serves many key functions to regulate a protein's activity, localization, and protein-protein interactions. Phosphorylation is catalyzed by various specific protein kinases, which involves removing a phosphate group from ATP and covalently attaching it to a recipient protein that acts as a substrate. Most kinases act on both serine and threonine; others act on tyrosine, and a number (dual specificity kinases) act on all three. Because phosphorylation can occur at multiple sites on any given protein, it can therefore change the function or localization of that protein at any time (1). Changing the function of these proteins has been linked to a number of diseases, including cancer, diabetes, heart disease, inflammation and neurological disorders (2-4).

### References

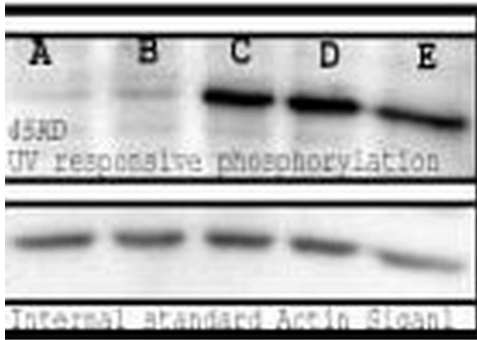
1. Goto H. et al. (2005) Nature Cell Biology 8: 180-187.
2. Blume-Jensen P. and Hunter T. (2001) Nature 411: 355-365.
3. Downward J. (2001) Nature 411: 759-762.
4. Pawson T. and Saxton T.M. (1999) Cell 97: 675-678.
5. Ostrovsky P.C. (1995) Genes Dev. 9(16): 2034-2041.

## Product Images



Immunocytochemistry/Immunofluorescence analysis using Rabbit Anti-Phosphoserine Polyclonal Antibody (SPC-149). Tissue: HeLa Cells. Species: Human. Fixation: 2% Formaldehyde for 20 min at RT. Primary Antibody: Rabbit Anti-Phosphoserine Polyclonal Antibody (SPC-149) at 1:50 for 12 hours at 4°C. Secondary Antibody: R-PE Goat Anti-Rabbit (yellow) at 1:200 for 2 hours at RT. Counterstain: DAPI (blue) nuclear stain at 1:40000 for 2 hours at RT. Localization: Cytoplasm. Nucleus. Magnification: 100x.

Western blot analysis of Mouse Spleen lysates showing detection of Phosphoserine protein using Rabbit Anti-Phosphoserine Polyclonal Antibody (SPC-149). Primary Antibody: Rabbit Anti-Phosphoserine Polyclonal Antibody (SPC-149) at 1:1000. Bands are responsive to treatment with varying long UV wavelengths: A(0), B(50), C(200), D(400), and E (treated with 0.1?M okadaic acid).



## Product Citations (1)

---

### Immunoprecipitation

---

#### **The effect of Bortezomib and Rapamycin on Telomerase Activity in Mantle Cell Lymphoma.**

Uziel, O., Cohen, O., Beery, E., Nordenberg, J. and Lahav, M. -2014 Transl Oncol. 7 (6): 741-751.

**PubMed ID:** 25500084 **Reactivity:** Human **Applications:** Immunoprecipitation

## Reviews

---

Based on validation through cited publications.



**StressMarq Biosciences**

June 15, 2016: