



# SZABO SCANDIC

Part of Europa Biosite

## Produktinformation



Forschungsprodukte & Biochemikalien



Zellkultur & Verbrauchsmaterial



Diagnostik & molekulare Diagnostik



Laborgeräte & Service

Weitere Information auf den folgenden Seiten!  
See the following pages for more information!



### Lieferung & Zahlungsart

siehe unsere [Liefer- und Versandbedingungen](#)

### Zuschläge

- Mindermengenzuschlag
- Trockeneiszuschlag
- Gefahrgutzuschlag
- Expressversand

### SZABO-SCANDIC HandelsgmbH

Quellenstraße 110, A-1100 Wien

T. +43(0)1 489 3961-0

F. +43(0)1 489 3961-7

[mail@szabo-scandic.com](mailto:mail@szabo-scandic.com)

[www.szabo-scandic.com](http://www.szabo-scandic.com)

[linkedin.com/company/szaboscandic](https://www.linkedin.com/company/szaboscandic) 

# Anti-Phosphothreonine Antibody

Rabbit Anti-Phosphothreonine Polyclonal  
Catalog No. SPC-154



Discovery through partnership | Excellence through quality

## Overview

---

### Product Name

Phosphothreonine Antibody

### Description

Rabbit Anti-Phosphothreonine Polyclonal

### Species Reactivity

Species Independent

### Applications

WB, ICC/IF, IP, ELISA

### Antibody Dilution

WB (1:500), ICC/IF (1:60), ELISA (1:2000), IP (1:100); optimal dilutions for assays should be determined by the user.

### Host Species

Rabbit

### Immunogen

Phosphothreonine conjugated to KLH

### Concentration

0.25 mg/ml

### Conjugates

Alkaline Phosphatase, APC, ATTO 390, ATTO 488, ATTO 565, ATTO 594, ATTO 633, ATTO 655, ATTO 680, ATTO 700, Biotin, FITC, HRP, PE/ATTO 594, PerCP, RPE, Streptavidin, Unconjugated

## Properties

---

### Storage Buffer

PBS, 50% glycerol, 0.09% sodium azide

### Storage Temperature

-20°C

### Shipping Temperature

Blue Ice or 4°C

### Purification

Protein A purified

### Clonality

---

Polyclonal

---

### Specificity

---

Detects proteins phosphorylated on threonine residues. Does not cross-react with phosphotyrosine.

---

### Cite This Product

---

Rabbit Anti- Phosphothreonine Polyclonal (StressMarq Biosciences Inc., Victoria BC CANADA, Catalog # SPC-154)

---

### Certificate Of Analysis

---

2 µg/ml of SPC-154 was sufficient for detection of phosphorylation signal in western blot analysis using mouse spleen extract treated with Vanadium.

---

## Biological Description

---

### Alternative Names

Phospho-threonine Antibody

---

### Research Areas

---

Cell Signaling, Phosphorylation, Post-translational Modifications

---

### Scientific Background

---

Protein phosphorylation is an important posttranslational modification that serves many key functions to regulate a protein's activity, localization, and protein-protein interactions. Phosphorylation is catalyzed by various specific protein kinases, which involves removing a phosphate group from ATP and covalently attaching it to a recipient protein that acts as a substrate. Most kinases act on both serine and threonine; others act on tyrosine, and a number (dual specificity kinases) act on all three. Because phosphorylation can occur at multiple sites on any given protein, it can therefore change the function or localization of that protein at any time (1). Changing the function of these proteins has been linked to a number of diseases, including cancer, diabetes, heart disease, inflammation and neurological disorders (2-4).

---

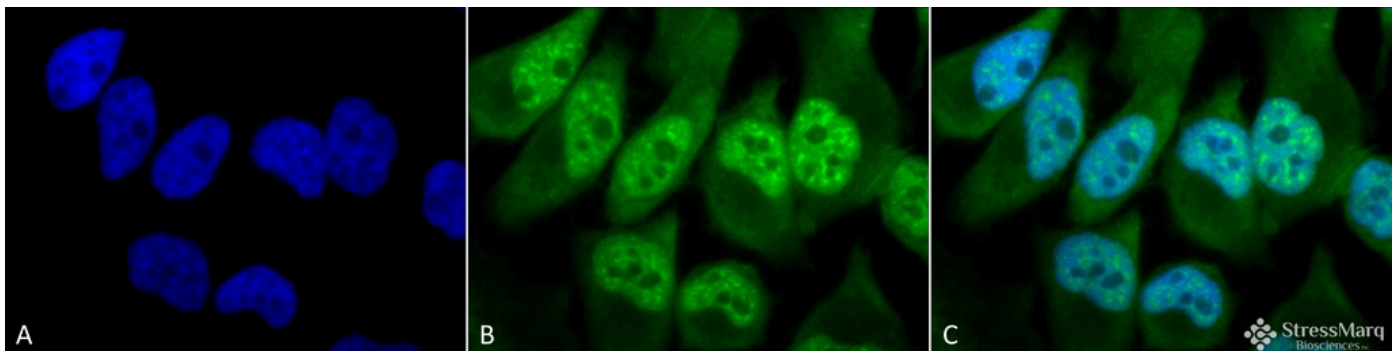
### References

---

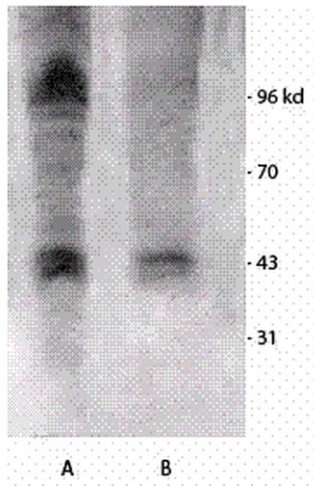
1. Goto H. et al. (2005) Nature Cell Biology 8: 180-187.
  2. Blume-Jensen P. and Hunter T. (2001) Nature 411: 355-365.
  3. Downward J. (2001) Nature 411: 759-762.
  4. Pawson T. and Saxton T.M. (1999) Cell 97: 675-678.
  5. Ostrovsky P.C. (1995) Genes Dev. 9(16): 2034-2041.
- 

## Product Images

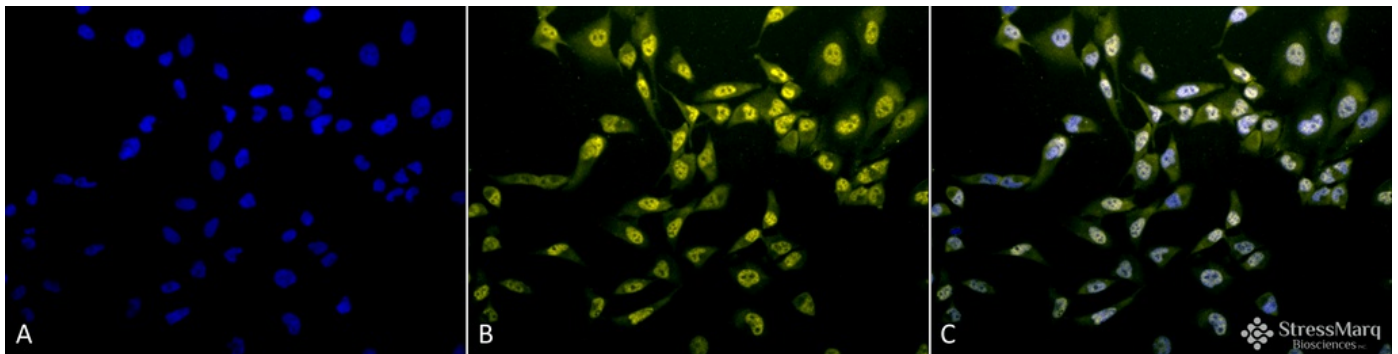
---



Immunocytochemistry/Immunofluorescence analysis using Rabbit Anti-Phosphothreonine Polyclonal Antibody (SPC-154). Tissue: HeLa Cells. Species: Human. Fixation: 2% Formaldehyde for 20 min at RT. Primary Antibody: Rabbit Anti-Phosphothreonine Polyclonal Antibody (SPC-154) at 1:60 for 12 hours at 4°C. Secondary Antibody: FITC Goat Anti-Rabbit (green) at 1:200 for 2 hours at RT. Counterstain: DAPI (blue) nuclear stain at 1:40000 for 2 hours at RT. Localization: Cytoplasm. Nucleus. Magnification: 100x. (A) DAPI (blue) nuclear stain. (B) Anti-Phosphothreonine Antibody. (C) Composite.



Western blot analysis of Mouse brain cell lysates showing detection of Phosphothreonine protein using Rabbit Anti-Phosphothreonine Polyclonal Antibody (SPC-154). Primary Antibody: Rabbit Anti-Phosphothreonine Polyclonal Antibody (SPC-154) at 1:1000. Left: Treated with Vanadium, Right: Non-treated..



Immunocytochemistry/Immunofluorescence analysis using Rabbit Anti-Phosphothreonine Polyclonal Antibody (SPC-154). Tissue: HeLa Cells. Species: Human. Fixation: 2% Formaldehyde for 20 min at RT. Primary Antibody: Rabbit Anti-Phosphothreonine Polyclonal Antibody (SPC-154) at 1:60 for 12 hours at 4°C. Secondary Antibody: R-PE Goat Anti-Rabbit (yellow) at 1:200 for 2 hours at RT. Counterstain: DAPI (blue) nuclear stain at 1:40000 for 2 hours at RT. Localization: Cytoplasm. Nucleus. Magnification: 20x. (A) DAPI (blue) nuclear stain. (B) Anti-Phosphothreonine Antibody. (C) Composite.

## Product Citations (1)

### Western Blot

**Aberrant trafficking of human melanocortin 1 receptor variants associated with red hair and skin cancer: Steady-state retention of mutant forms in the proximal golgi.**

Sanchez-Laorden, B.L. et al. -2009 J Cell Physiol. 220 (3): 640-654.

**PubMed ID:** 19452503 **Reactivity:** Human **Applications:** Western Blot

### Reviews

There are no reviews yet.