



# SZABO SCANDIC

Part of Europa Biosite

## Produktinformation



Forschungsprodukte & Biochemikalien



Zellkultur & Verbrauchsmaterial



Diagnostik & molekulare Diagnostik



Laborgeräte & Service

Weitere Information auf den folgenden Seiten!  
See the following pages for more information!



### Lieferung & Zahlungsart

siehe unsere [Liefer- und Versandbedingungen](#)

### Zuschläge

- Mindermengenzuschlag
- Trockeneiszuschlag
- Gefahrgutzuschlag
- Expressversand

### SZABO-SCANDIC HandelsgmbH

Quellenstraße 110, A-1100 Wien

T. +43(0)1 489 3961-0

F. +43(0)1 489 3961-7

[mail@szabo-scandic.com](mailto:mail@szabo-scandic.com)

[www.szabo-scandic.com](http://www.szabo-scandic.com)

[linkedin.com/company/szaboscandic](https://www.linkedin.com/company/szaboscandic) 

# Anti-Rab5 Antibody

Rabbit Anti-Human Rab5 Polyclonal  
Catalog No. SPC-168



Discovery through partnership | Excellence through quality

## Overview

---

### Product Name

Rab5 Antibody

### Description

Rabbit Anti-Human Rab5 Polyclonal

### Species Reactivity

Human, Monkey, Mouse, Rat, Bovine

### Applications

WB, IHC, ICC/IF

### Antibody Dilution

WB (1:1000), IHC (1:100), ICC/IF (1:80); optimal dilutions for assays should be determined by the user.

### Host Species

Rabbit

### Immunogen Species

Human

### Immunogen

Human Rab5 synthetic peptide conjugated to KLH; identical to dog Rab5 sequence over the residues

### Concentration

1 mg/ml

### Conjugates

Alkaline Phosphatase, APC, ATTO 390, ATTO 488, ATTO 565, ATTO 594, ATTO 633, ATTO 655, ATTO 680, ATTO 700, Biotin, FITC, HRP, PE/ATTO 594, PerCP, RPE, Streptavidin, Unconjugated

## Properties

---

### Storage Buffer

PBS, 50% glycerol, 0.09% sodium azide

### Storage Temperature

-20°C

### Shipping Temperature

Blue Ice or 4°C

### Purification

---

Protein A purified

---

### Clonality

Polyclonal

---

### Specificity

Detects ~26kDa.

---

### Cite This Product

Rabbit Anti-Human Rab5 Polyclonal (StressMarq Biosciences Inc., Victoria BC CANADA, Catalog # SPC-168)

---

### Certificate Of Analysis

1 µl/ml of SPC-168 was sufficient for detection of Rab5 in 15 µg of HeLa lysate by ECL immunoblot analysis using Donkey anti-rabbit IgG:HRP as the secondary antibody.

---

## Biological Description

---

### Alternative Names

Rab 5A Antibody, RAS associated protein RAB5A Antibody, Ras related protein Rab 5 A Antibody

---

### Research Areas

Cell Signaling, Cell Structure, Neuroscience, Organelle Markers, Pre-Synaptic Markers, Trafficking

---

### Cellular Localization

Cell membrane, Early Endosome Membrane, Endosome, Melanosome

---

### Accession Number

NP\_004153.2

---

### Gene ID

5868

---

### Swiss Prot

Q6FI44

---

### Scientific Background

Rab5 is a 24kDa member of the Rab family of small guanosine triphosphatases (GTPases), Ras superfamily. Rab GTPases are central regulators of membrane trafficking in the eukaryotic cell. Their regulatory capacity depends on their ability to cycle between the GDP-bound inactive and GTP-bound active states. This conversion is regulated by GDP/GTP exchange factors (GEPs), GDP dissociation inhibitors (GDIs) and GTPase-activating proteins (GAPs) (1, 2). Activation of a Rab protein is coupled to its association with intracellular membranes, allowing it to recruit downstream effector proteins to the cytoplasmic surface of a subcellular compartment (3). Through these proteins, Rab GTPases regulate vesicle formation, actin- and tubulin-dependent vesicle movement, and membrane fusion(1). Rab proteins contain conserved regions involved in guanine-nucleotide binding, and hyper variable COHO-terminal domains with a cysteine motif implicated in subcellular targeting. Post-translational modification of the cysteine motif with one or two geranyl groups is essential for the membrane association and correct intracellular localization of Rab proteins(3). Each Rab shows a characteristic subcellular distribution (4).

In particular, Rab5 is ubiquitously expressed in human tissues. It localizes mainly to early endosomes, but is also present on the plasma membrane. It regulates the fusion between endocytic vesicles and early endosomes, as well as the homotypic fusion between early endosomes (5). Among the proteins recruited by the GTP-bound active Rab5 are Rabaptin-5 and EEA1 (6). Anti-Rab5 may be used as an early endosome marker.

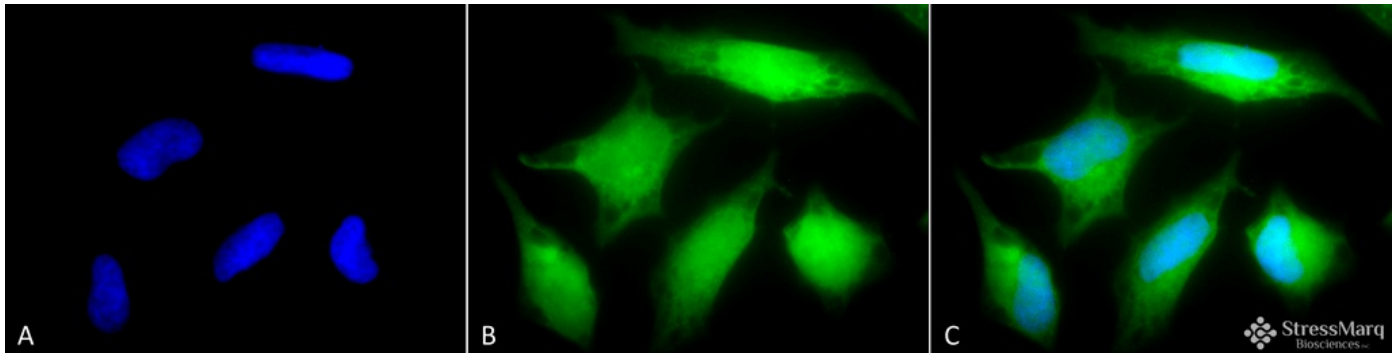
---

### References

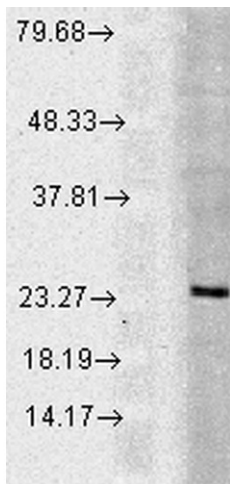
1. Stenmark H., and Olkkonen V.M. (2001) *Genome Biol.* 2: 3007.1-3007.7.
2. Takai Y., et al. (2001) *Physiol. Rev.* 81: 153-208.

3. Ali B.R., et al. (2004) *J. Cell Sci.* 117: 6401-6412.
4. Zerial M., and McBride H. (2001) *Nat. Rev. Mol. Cell Biol.* 2: 107-117.
5. Sonnichsen B., et al. (2000) *J. Cell Biol.* 149: 901-913
6. Woodman P.G. (2000) *Traffic.* 1: 695-701.

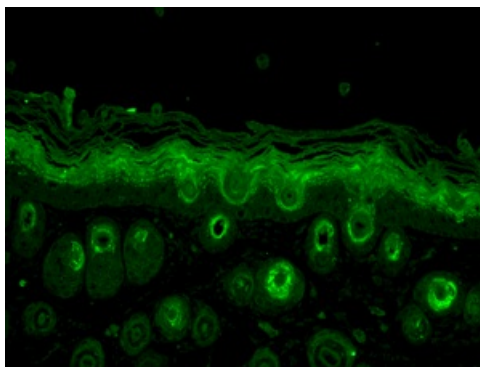
## Product Images



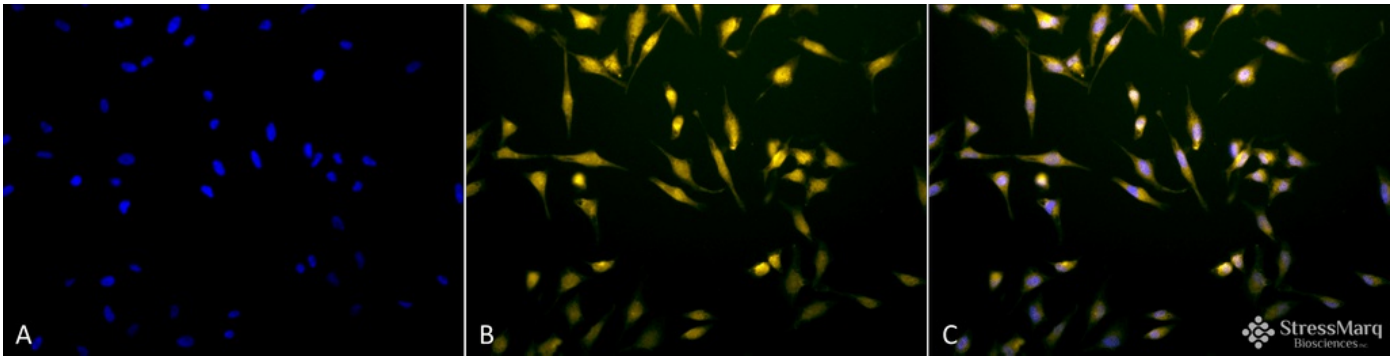
Immunocytochemistry/Immunofluorescence analysis using Rabbit Anti-Rab5 Polyclonal Antibody (SPC-168). Tissue: HeLa Cells. Species: Human. Fixation: 2% Formaldehyde for 20 min at RT. Primary Antibody: Rabbit Anti-Rab5 Polyclonal Antibody (SPC-168) at 1:80 for 12 hours at 4°C. Secondary Antibody: R-PE Goat Anti-Rabbit (yellow) at 1:200 for 2 hours at RT. Counterstain: DAPI (blue) nuclear stain at 1:40000 for 2 hours at RT. Localization: Cytoplasm. Melanosome. Nucleus. Magnification: 100x. (A) DAPI (blue) nuclear stain. (B) Anti-Rab5 Antibody. (C) Composite.



Western blot analysis of Human Cell line lysates showing detection of Rab5 protein using Rabbit Anti-Rab5 Polyclonal Antibody (SPC-168). Load: 15 µg protein. Block: 1.5% BSA for 30 minutes at RT. Primary Antibody: Rabbit Anti-Rab5 Polyclonal Antibody (SPC-168) at 1:1000 for 2 hours at RT. Secondary Antibody: Donkey Anti-Rabbit IgG: HRP for 1 hour at RT.



Immunohistochemistry analysis using Rabbit Anti-Rab5 Polyclonal Antibody (SPC-168). Tissue: backskin. Species: Mouse. Fixation: Bouin's Fixative Solution. Primary Antibody: Rabbit Anti-Rab5 Polyclonal Antibody (SPC-168) at 1:100 for 1 hour at RT. Secondary Antibody: FITC Goat Anti-Rabbit (green) at 1:50 for 1 hour at RT. Localization: Cytoplasm.



Immunocytochemistry/Immunofluorescence analysis using Rabbit Anti-Rab5 Polyclonal Antibody (SPC-168). Tissue: HeLa Cells. Species: Human. Fixation: 2% Formaldehyde for 20 min at RT. Primary Antibody: Rabbit Anti-Rab5 Polyclonal Antibody (SPC-168) at 1:80 for 12 hours at 4°C. Secondary Antibody: FITC Goat Anti-Rabbit (green) at 1:200 for 2 hours at RT. Counterstain: DAPI (blue) nuclear stain at 1:40000 for 2 hours at RT. Localization: Cytoplasm. Melanosome. Nucleus. Magnification: 20x. (A) DAPI (blue) nuclear stain. (B) Anti-Rab5 Antibody. (C) Composite.

## Product Citations (1)

---

### Immunocytochemistry/Immunofluorescence

---

#### **Neuropilin-1 promotes VEGFR-2 trafficking through Rab11 vesicles thereby specifying signal output.**

Ballmer-Hofer, K., Andersson, A.E., Ratcliffe, L.E. and Berger, P. -2011 Blood. 118 (3): 816-826.

**PubMed ID:** 21586748 **Reactivity:** Human **Applications:** Immunocytochemistry/Immunofluorescence

## Reviews

---

Based on validation through cited publications.



**StressMarq Biosciences**  
June 15, 2016: