



SZABO SCANDIC

Part of Europa Biosite

Produktinformation



Forschungsprodukte & Biochemikalien



Zellkultur & Verbrauchsmaterial



Diagnostik & molekulare Diagnostik



Laborgeräte & Service

Weitere Information auf den folgenden Seiten!
See the following pages for more information!



Lieferung & Zahlungsart

siehe unsere [Liefer- und Versandbedingungen](#)

Zuschläge

- Mindermengenzuschlag
- Trockeneiszuschlag
- Gefahrgutzuschlag
- Expressversand

SZABO-SCANDIC HandelsgmbH

Quellenstraße 110, A-1100 Wien

T. +43(0)1 489 3961-0

F. +43(0)1 489 3961-7

mail@szabo-scandic.com

www.szabo-scandic.com

[linkedin.com/company/szaboscandic](https://www.linkedin.com/company/szaboscandic) 

Anti-HSP22 Antibody

Rabbit Anti-Human HSP22 Polyclonal
Catalog No. SPC-181



Discovery through partnership | Excellence through quality

Overview

Product Name

HSP22 Antibody

Description

Rabbit Anti-Human HSP22 Polyclonal

Species Reactivity

Human, Mouse, Rat

Applications

WB, IHC, ICC/IF, IP

Antibody Dilution

WB (1:1000), ICC/IF (1:100), IHC (1:100); optimal dilutions for assays should be determined by the user.

Host Species

Rabbit

Immunogen Species

Human

Immunogen

Human HSP22

Concentration

1 mg/ml

Conjugates

Alkaline Phosphatase, APC, ATTO 390, ATTO 488, ATTO 565, ATTO 594, ATTO 633, ATTO 655, ATTO 680, ATTO 700, Biotin, FITC, HRP, PE/ATTO 594, PerCP, RPE, Streptavidin, Unconjugated

Properties

Storage Buffer

PBS pH7.4, 50% glycerol, 0.09% sodium azide

Storage Temperature

-20°C

Shipping Temperature

Blue Ice or 4°C

Purification

Peptide Affinity Purified

Clonality

Polyclonal

Specificity

Detects ~22kDa. Does not cross-react with HSP27 or alpha-crystallin.

Cite This Product

Rabbit Anti-Human HSP22 Polyclonal (StressMarq Biosciences Inc., Victoria BC CANADA, Catalog # SPC-181)

Certificate Of Analysis

A 1:1000 dilution of SPC-181 was sufficient for detection of HSP22 in 10 µg of rat tissue lysate by colorimetric immunoblot analysis using Goat anti-rabbit IgG:HRP as the secondary antibody.

Biological Description

Alternative Names

Alpha crystallin C chain Antibody, CMT2L Antibody, CRYAC Antibody, DHMN2 Antibody, H11 Antibody, Heat shock 22kDa protein 8 Antibody, HMN2 Antibody, HSB8 Antibody, HSPB8 Antibody

Research Areas

Cancer, Heat Shock

Cellular Localization

Cytoplasm, Nucleus

Accession Number

NP_055180.1

Gene ID

26353

Swiss Prot

Q9UJY1

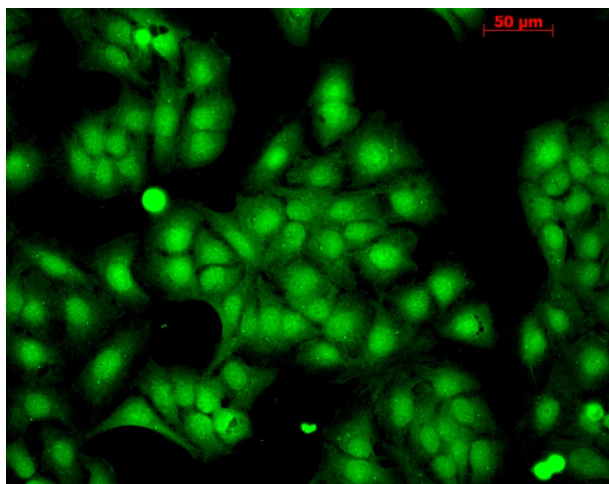
Scientific Background

HSP22 (HSPB8) is a 196-amino acid protein that is a member of the small heat shock protein super-family and the human protein is most closely related to HSP27. Similar to most other sHSPs, HSP22 is predominately transcribed in skeletal muscle and heart, as well as the placenta (1). HSP22 is a monomeric protein which interacts with HSPB1. It displays temperature-dependent chaperone activity. In a two hybrid screen, HSPB8 interacted preferentially with a triple aspartate form of HSP27 which mimics HSP27 phosphorylated at Ser15, Ser78, and Ser82, as compared to wild-type HSP27 (2). HSPB8 has two binding domains (N and C Terminal) that are specific for different binding partners, and has the ability to bind itself and other sHSPs (3). The chaperone-like activity is of great importance to the function of HSP22 in various processes including proliferation, apoptosis and macro autophagy (4). Mutations in the HSPB8 gene are associated with the inherited peripheral neuropathies, autosomal dominant distal hereditary motor neuropathy type IIA (dSMA) and axonal Charcot-Marie-Tooth disease type 2L (CMT2L) (5).

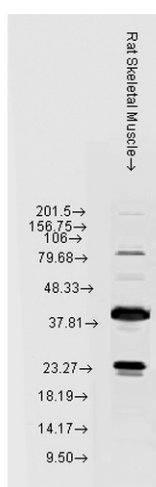
References

1. Kappe G., et al. (2001) *Biochem Biophys Acta*. 1520: 1-6.
 2. Benndorf R., et al. (2001) *J Biol Chem*. 276: 26753-26761.
 3. Sun X., et al. (2004) *J Biol Chem*. 279: 2394-2402.
 4. Kim M.V., et al. (2004) *Biochem Biophys Res Commun*. 325: 649-652.
 5. Wilhelmus M.M., et al. (2006) *Acta Neuropathol. (Berl)* 111: 139-149.
-

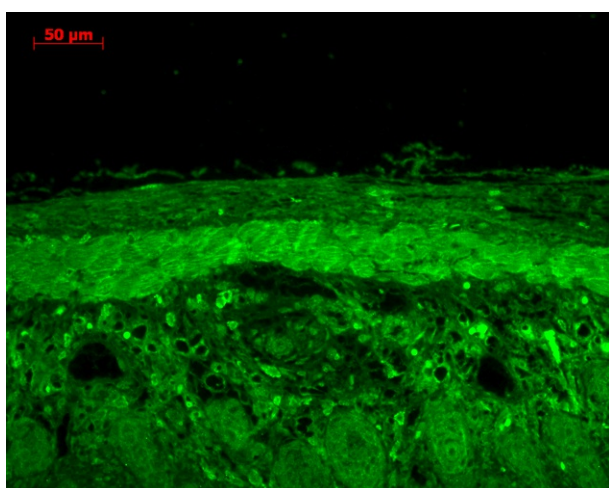
Product Images



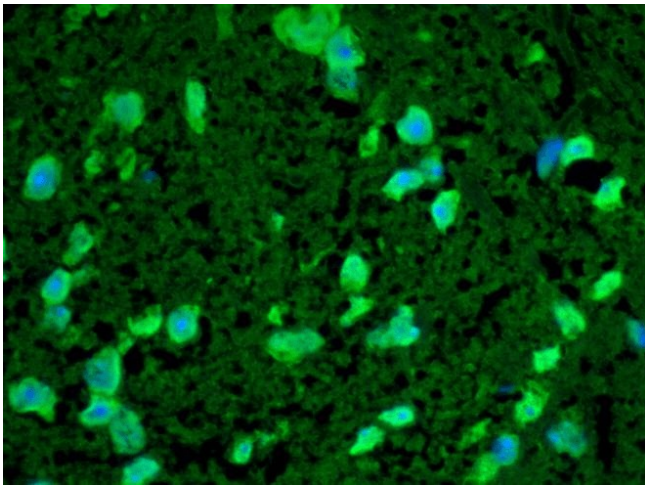
Immunocytochemistry/Immunofluorescence analysis using Rabbit Anti-HSP22 Polyclonal Antibody (SPC-181). Tissue: HaCaT cells. Species: Human. Fixation: Cold 100% methanol at -20C for 10 minutes. Primary Antibody: Rabbit Anti-HSP22 Polyclonal Antibody (SPC-181) at 1:100 for 12 hours at 4°C. Secondary Antibody: FITC Goat Anti-Rabbit at 1:50 for 1-2 hours at RT in dark. Localization: Nuclear Staining.



Western blot analysis of Rat Skeletal muscle lysates showing detection of HSP22 protein using Rabbit Anti-HSP22 Polyclonal Antibody (SPC-181). Load: 15 μg protein. Block: 1.5% BSA for 30 minutes at RT. Primary Antibody: Rabbit Anti-HSP22 Polyclonal Antibody (SPC-181) at 1:1000 for 2 hours at RT. Secondary Antibody: Donkey Anti-Rabbit IgG: HRP for 1 hour at RT.



Immunohistochemistry analysis using Rabbit Anti-HSP22 Polyclonal Antibody (SPC-181). Tissue: backskin. Species: Mouse. Fixation: Bouin's Fixative Solution. Primary Antibody: Rabbit Anti-HSP22 Polyclonal Antibody (SPC-181) at 1:100 for 1 hour at RT. Secondary Antibody: FITC Goat Anti-Rabbit (green) at 1:50 for 1 hour at RT. Localization: Epidermis positive, dermal staining.



Immunohistochemistry analysis using Rabbit Anti-HSP22 Polyclonal Antibody (SPC-181). Tissue: Spinal cord. Species: Mouse. Primary Antibody: Rabbit Anti-HSP22 Polyclonal Antibody (SPC-181) at 1:100. Secondary Antibody: Alexa Fluor 488 Goat Anti-Rabbit. DAPI merged with Alexa 488. Courtesy of: Joy Irobi-Devolder, University of Antwerp, Belgium..

Product Citations (0)

Currently there are no citations for this product.

Reviews

There are no reviews yet.