



SZABO SCANDIC

Part of Europa Biosite

Produktinformation



Forschungsprodukte & Biochemikalien



Zellkultur & Verbrauchsmaterial



Diagnostik & molekulare Diagnostik



Laborgeräte & Service

Weitere Information auf den folgenden Seiten!
See the following pages for more information!



Lieferung & Zahlungsart

siehe unsere [Liefer- und Versandbedingungen](#)

Zuschläge

- Mindermengenzuschlag
- Trockeneiszuschlag
- Gefahrgutzuschlag
- Expressversand

SZABO-SCANDIC HandelsgmbH

Quellenstraße 110, A-1100 Wien

T. +43(0)1 489 3961-0

F. +43(0)1 489 3961-7

mail@szabo-scandic.com

www.szabo-scandic.com

[linkedin.com/company/szaboscandic](https://www.linkedin.com/company/szaboscandic) 

Anti-Cpn10 Antibody

Rabbit Anti-Human Cpn10 Polyclonal
Catalog No. SPC-193



Discovery through partnership | Excellence through quality

Overview

Product Name

Cpn10 Antibody

Description

Rabbit Anti-Human Cpn10 Polyclonal

Species Reactivity

Dog, Human, Mouse, Rat, African clawed frog (*Xenopus laevis*), Bovine, Guinea Pig (*Cavia porcellus*), Pig, Rabbit, Sheep

Applications

WB, IHC, ICC/IF, IP, ELISA

Antibody Dilution

WB (1:1000), IHC (1:100); optimal dilutions for assays should be determined by the user.

Host Species

Rabbit

Immunogen Species

Human

Immunogen

Human Cpn10 peptide AA 91-101

Concentration

1 mg/ml

Conjugates

Alkaline Phosphatase, APC, ATTO 390, ATTO 488, ATTO 565, ATTO 594, ATTO 633, ATTO 655, ATTO 680, ATTO 700, Biotin, FITC, HRP, PE/ATTO 594, PerCP, RPE, Streptavidin, Unconjugated

Properties

Storage Buffer

PBS pH 7.3, 0.02% sodium azide

Storage Temperature

-20°C

Shipping Temperature

Blue Ice or 4°C

Purification

Protein A purified

Clonality

Polyclonal

Specificity

Detects ~10kDa.

Cite This Product

Rabbit Anti-Human Cpn10 Polyclonal (StressMarq Biosciences Inc., Victoria BC CANADA, Catalog # SPC-193)

Certificate Of Analysis

1 µg/ml of SPC-193 was sufficient for detection of Cpn10 in 10 µg of Hela lysates by colorimetric immunoblot analysis using Goat anti-rabbit IgG:HRP as the secondary antibody.

Biological Description

Alternative Names

10kDa Chaperonin Antibody, Chaperonin 10 Antibody, Cpn 10 Antibody, EPF Antibody, GROES Antibody, Heat Shock 10kD protein1 Antibody, HSP10 Antibody, HSPE1 Antibody

Research Areas

Cancer, Heat Shock

Cellular Localization

Mitochondrion, Mitochondrion Matrix

Accession Number

NP_002148.1

Gene ID

3336

Swiss Prot

P61604

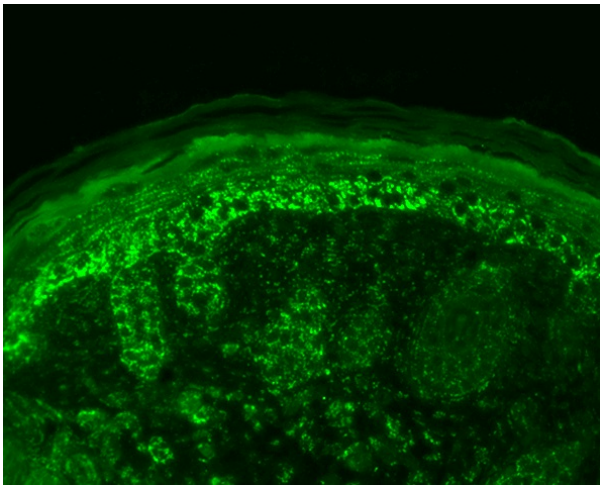
Scientific Background

Chaperonin 10, otherwise known as Cpn10, (groES in E.coli) make up a family of small heat shock proteins with an approximate molecular mass of 10kDa (HSP10s). Cpn10 acts as a co-chaperone and interacts with the HSP60 family to promote proper folding of polypeptides. Cpn10 and Cpn60 both exhibit sevenfold axis of symmetry and function as a team in the protein folding and assembly process (1). Cpn10 has been located in human platelets, but is also present in human maternal serum (2, 3). It has been reported that human Cpn10 is identical with early pregnancy factor, which is involved in control over cell growth and development. This identification suggest that Cpn10 may act like a hormone in stressful situations such as pregnancy (4).

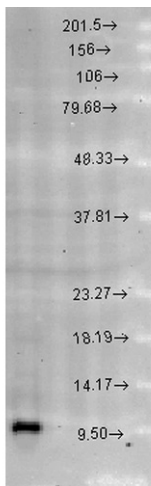
References

1. Velez-Granell C.S., et al. (1994) J of Cell Science. 107(3): 539-549.
 2. Morton H., Hegh V., and Clunie G.J.A. (1974) Nature (London) 249: 459-460.
 3. Cavanagh A.C., and Morton H. (1994) Eur. J. Biochem. 222: 551-560.
 4. Minto M., et al. (1998) Molecular Cell Research. 1403 (2): 151-157.
-

Product Images



Immunohistochemistry analysis using Rabbit Anti-Cpn10 Polyclonal Antibody (SPC-193). Tissue: backskin. Species: Mouse. Fixation: Bouin's Fixative Solution. Primary Antibody: Rabbit Anti-Cpn10 Polyclonal Antibody (SPC-193) at 1:100 for 1 hour at RT. Secondary Antibody: FITC Goat Anti-Rabbit (green) at 1:50 for 1 hour at RT. Localization: Strong basal layer punctate staining in the cytoplasm, weakens as it ascends to upper epidermis..



Western blot analysis of Rat brain cell lysates showing detection of Cpn10 protein using Rabbit Anti-Cpn10 Polyclonal Antibody (SPC-193). Load: 15 μ g protein. Block: 1.5% BSA for 30 minutes at RT. Primary Antibody: Rabbit Anti-Cpn10 Polyclonal Antibody (SPC-193) at 1:1000 for 2 hours at RT. Secondary Antibody: Donkey Anti-Rabbit IgG: HRP for 1 hour at RT.

Product Citations (0)

Currently there are no citations for this product.

Reviews

There are no reviews yet.