



SZABO SCANDIC

Part of Europa Biosite

Produktinformation



Forschungsprodukte & Biochemikalien



Zellkultur & Verbrauchsmaterial



Diagnostik & molekulare Diagnostik



Laborgeräte & Service

Weitere Information auf den folgenden Seiten!
See the following pages for more information!



Lieferung & Zahlungsart

siehe unsere [Liefer- und Versandbedingungen](#)

Zuschläge

- Mindermengenzuschlag
- Trockeneiszuschlag
- Gefahrgutzuschlag
- Expressversand

SZABO-SCANDIC HandelsgmbH

Quellenstraße 110, A-1100 Wien

T. +43(0)1 489 3961-0

F. +43(0)1 489 3961-7

mail@szabo-scandic.com

www.szabo-scandic.com

[linkedin.com/company/szaboscandic](https://www.linkedin.com/company/szaboscandic) 

Anti-TLR4 Antibody

Rabbit Anti-Human TLR4 Polyclonal
Catalog No. SPC-200



Discovery through partnership | Excellence through quality

Overview

Product Name

TLR4 Antibody

Description

Rabbit Anti-Human TLR4 Polyclonal

Species Reactivity

Human, Mouse

Applications

WB, IHC, ICC/IF, FCM, FACS

Antibody Dilution

WB (1:500), IHC (1:50); optimal dilutions for assays should be determined by the user.

Host Species

Rabbit

Immunogen Species

Human

Immunogen

Developed against a synthetic peptide corresponding to amino acids 420-435 of human TLR4

Concentration

1 mg/ml

Conjugates

Alkaline Phosphatase, APC, ATTO 390, ATTO 488, ATTO 565, ATTO 594, ATTO 633, ATTO 655, ATTO 680, ATTO 700, Biotin, FITC, HRP, PE/ATTO 594, PerCP, RPE, Streptavidin, Unconjugated

Properties

Storage Buffer

PBS, 50% glycerol, 0.09% sodium azide

Storage Temperature

-20°C

Shipping Temperature

Blue Ice or 4°C

Purification

Protein A purified

Clonality

Polyclonal

Specificity

Detects ~75-80kDa when tested against partial recombinant mouse TLR4 (extra-cellular portion plus His-tag).

Cite This Product

Rabbit Anti-Human TLR4 Polyclonal (StressMarq Biosciences Inc., Victoria BC CANADA, Catalog # SPC-200)

Certificate Of Analysis

2 µg/ml of SPC-200 was sufficient for detection of TLR4 in 100 ng of partial recombinant mouse TLR4 protein by colorimetric immunoblot analysis using Goat anti-rabbit IgG:HRP as the secondary antibody.

Biological Description

Alternative Names

ARMD10 Antibody, CD284 Antibody, TLR 4 Antibody, TOLL Antibody, Toll like receptor 4 Antibody

Research Areas

Atherosclerosis, Cardiovascular System, Cell Signaling

Cellular Localization

Membrane

Accession Number

NP_612564.1

Gene ID

7099

Swiss Prot

O00206

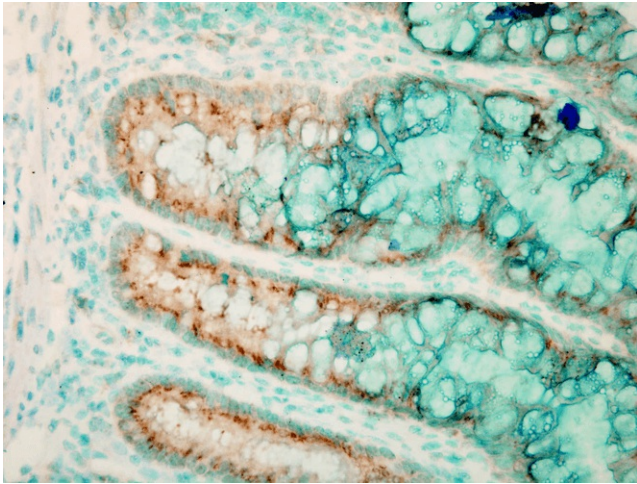
Scientific Background

The Toll-like receptor (TLR) family in mammal comprises a family of trans-membrane proteins characterized by multiple copies of leucine rich repeats in the extracellular domain and 1L-1 receptor motif in the cytoplasmic domain. Like its counterparts in *Drosophila*, TLRs signal through adaptor molecules (1). The TLR family is a phylo-genetically conserved mediator of innate immunity that is essential for microbial recognition (2). Ten human homologs of TLRs (TLR1-10) have been described (3). Among this family of receptors, TLR2 and TLR4 have been most studied. These studies have suggested that TLR2 and TLR4 may serve as potential main mediators of LPS signaling (4,5). The mouse TLR4 cDNA codes for a protein consisting of 839 amino acids, with an approximate molecular weight of 90kDa (6).

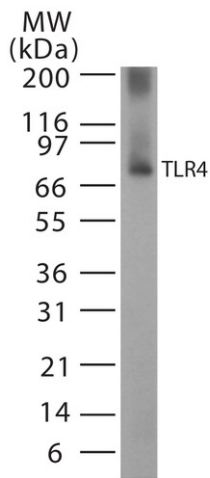
References

1. Muzio M., Natoli G., Saccan S., Levrero M., and Mantovani A. (1998) *J. Exp. Med.* 187: 2097-2101.
 2. Medzhitov R. and Janeway C.A (1997) *Cell.* 91: 295-298.
 3. Chuang T.H. and Ulevitch R.J. (2001) *Biochim. Biophys. Acta.* 1518(1-2): 157-161.
 4. Takeuchi O., et al. (1999) *Immunity.* 11: 443.
 5. Poltorak A., Riccardi-Castagnoli P., Citterio S., and Butler B. (2000) *Proc. Natl. Acad. Sci USA.* 97: 2163-2167.
 6. Medzhitov R., Preston-Hurlburt P. and Janeway C.A. (1997) *Jr. Nature.* 388(6640): 394-397.
-

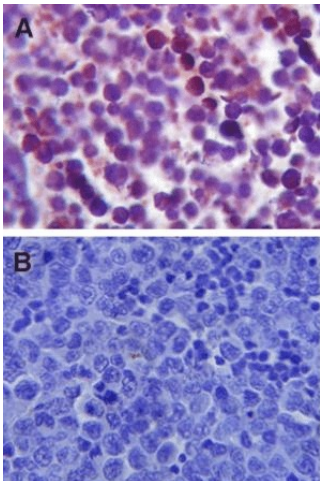
Product Images



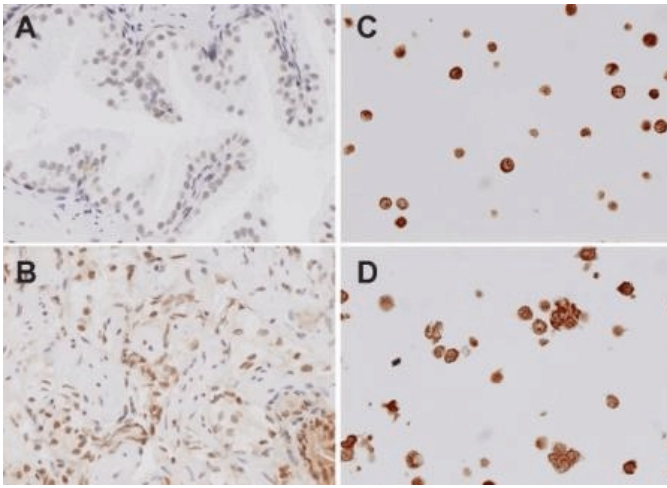
Immunohistochemistry analysis using Rabbit Anti-TLR4 Polyclonal Antibody (SPC-200). Tissue: colon colitis. Species: Mouse. Fixation: Formalin. Primary Antibody: Rabbit Anti-TLR4 Polyclonal Antibody (SPC-200) at 1:100000 for 12 hours at 4°C. Secondary Antibody: Biotin Goat Anti-Rabbit at 1:2000 for 1 hour at RT. Counterstain: Methyl Green at 200uL for 2 min at RT. Localization: Inflammatory cells.



Western blot analysis of Human, Mouse Cell line lysates showing detection of TLR4 protein using Rabbit Anti-TLR4 Polyclonal Antibody (SPC-200). Primary Antibody: Rabbit Anti-TLR4 Polyclonal Antibody (SPC-200) at 1:1000.



Immunohistochemistry analysis using Rabbit Anti-TLR4 Polyclonal Antibody (SPC-200). Tissue: Spleen tissue. Species: Mouse. Primary Antibody: Rabbit Anti-TLR4 Polyclonal Antibody (SPC-200) at 1:100.



Immunohistochemistry analysis using Rabbit Anti-TLR4 Polyclonal Antibody (SPC-200). Tissue: spleen tissue. Species: Mouse. Primary Antibody: Rabbit Anti-TLR4 Polyclonal Antibody (SPC-200) at 1:100.

Product Citations (2)

Western Blot

Lipid A-activated inducible nitric oxide synthase expression via nuclear factor- κ B in mouse choroid plexus cells.

Takano, M. et al. (2015) Immunol Lett. 167(2):57-62.

PubMed ID: 26235132 **Reactivity:** Mouse **Applications:** Western Blot

Immunohistochemistry

Astrocytic TLR4 expression and LPS-induced nuclear translocation of STAT3 in the sensory circumventricular organs of adult mouse brain.

Nakano, Y. et al. (2015) J Neuroimmunol. 278 (2015): 144-158.

PubMed ID: 25595264 **Reactivity:** Mouse **Applications:** Immunohistochemistry

Reviews

Based on validation through cited publications.



StressMarq Biosciences

June 15, 2016: