



SZABO SCANDIC

Part of Europa Biosite

Produktinformation



Forschungsprodukte & Biochemikalien



Zellkultur & Verbrauchsmaterial



Diagnostik & molekulare Diagnostik



Laborgeräte & Service

Weitere Information auf den folgenden Seiten!
See the following pages for more information!



Lieferung & Zahlungsart

siehe unsere [Liefer- und Versandbedingungen](#)

Zuschläge

- Mindermengenzuschlag
- Trockeneiszuschlag
- Gefahrgutzuschlag
- Expressversand

SZABO-SCANDIC HandelsgmbH

Quellenstraße 110, A-1100 Wien

T. +43(0)1 489 3961-0

F. +43(0)1 489 3961-7

mail@szabo-scandic.com

www.szabo-scandic.com

[linkedin.com/company/szaboscandic](https://www.linkedin.com/company/szaboscandic) 

Anti-SOD1 (U β B) Antibody

Rabbit Anti-Human SOD1 (U β B) Polyclonal
Catalog No. SPC-205



Discovery through partnership | Excellence through quality

Overview

Product Name

SOD1 (U β B) Antibody

Description

Rabbit Anti-Human SOD1 (U β B) Polyclonal

Species Reactivity

Human, Mouse, Rat

Applications

WB, ICC/IF

Antibody Dilution

WB (1:1000), ICC/IF (1:100); optimal dilutions for assays should be determined by the user.

Host Species

Rabbit

Immunogen Species

Human

Immunogen

N-terminal region of SOD1, unfolded beta barrel region

Concentration

1 mg/ml

Conjugates

Alkaline Phosphatase, APC, ATTO 390, ATTO 488, ATTO 565, ATTO 594, ATTO 633, ATTO 655, ATTO 680, ATTO 700, Biotin, FITC, HRP, PE/ATTO 594, PerCP, RPE, Streptavidin, Unconjugated

Properties

Storage Buffer

PBS, 50% glycerol, 0.09% sodium azide

Storage Temperature

-20°C

Shipping Temperature

Blue Ice or 4°C

Purification

Protein A purified

Clonality

Polyclonal

Specificity

Recognizes a conformation specific epitope where the beta barrel is unfolded.

Cite This Product

Rabbit Anti-Human SOD1 Polyclonal (StressMarq Biosciences Inc., Victoria BC CANADA, Catalog # SPC-205)

Certificate Of Analysis

1µg/ml of SPC-205 was sufficient for detection of the unfolded beta barrel of SOD1 by colorimetric dot blot analysis using Goat anti-rabbit IgG:HRP as the secondary antibody.

Biological Description

Alternative Names

USOD Antibody, Superoxide dismutase 1 Antibody, SOD Antibody, SOD1 unfolded beta barrel region Antibody

Research Areas

Cancer, ALS Disease, Neurodegeneration, Neuroscience, Oxidative Stress

Cellular Localization

Cytoplasm

Accession Number

CAG46542

Gene ID

6647

Swiss Prot

P00441

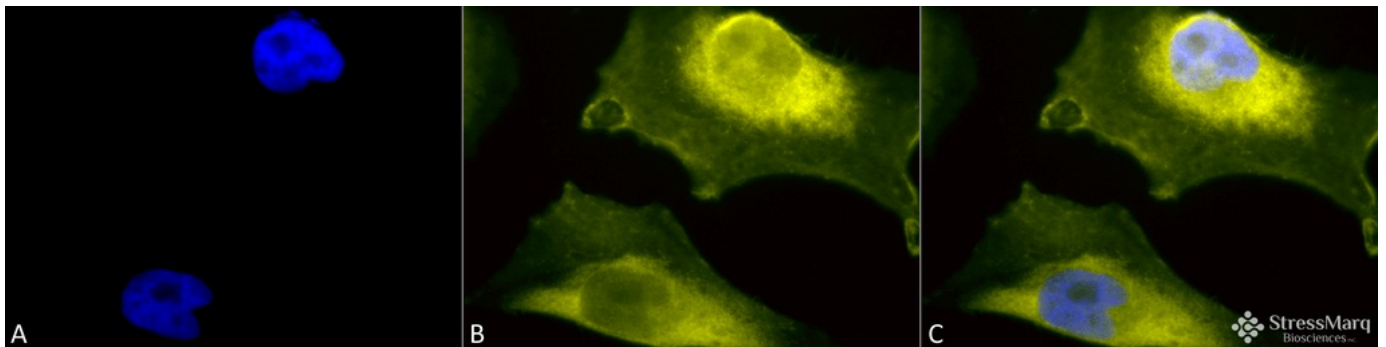
Scientific Background

Superoxide dismutase (SOD) is an endogenously produced intracellular enzyme present in almost every cell in the body (2). It works by catalyzing the dismutation of the superoxide radical O_2^- to O_2 and H_2O_2 , which are then metabolized to H_2O and O_2 by catalase and glutathione peroxidase (1,4). In general, SODs play a major role in antioxidant defense mechanisms (3). There are two main types of SOD in mammalian cells. One form (SOD1) contains Cu and Zn ions as a homodimer and exists in the cytoplasm. The two subunits of 16 kDa each are linked by two cysteines forming an intra-subunit disulphide bridge (2). Misfolding of SOD1 has been implicated in Amyotrophic lateral sclerosis (ALS). Therefore conformation specific antibodies such as Anti-SOD1 (U β B), which targets an unfolded region of the beta barrel of SOD1, are useful for determining the conformation of SOD1 in affected tissues (5). This antibody can be used in conjunction with Anti-SOD1 (EDI) (SPC-206D) which detects an exposed dimer interface (EDI) of SOD1.

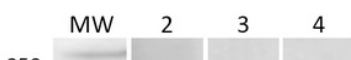
References

1. Barrister J.V., et al. (1987). Crit. Rev. Biochem. 22:111-180.
2. Furukawa Y., and O Halloran T. (2006) Antioxid Redox Signal. 8(5-6):847-67.
3. Gao B., et al. (2003) Am J Physiol Lung Cell Mol Physiol. 284:L917-L925.
4. Hassan H.M. (1988) Free Radical Biol. Med. 5:377-385.
5. Kerman A., et al. (2010) Acta Neuropathol. 119:335-344.

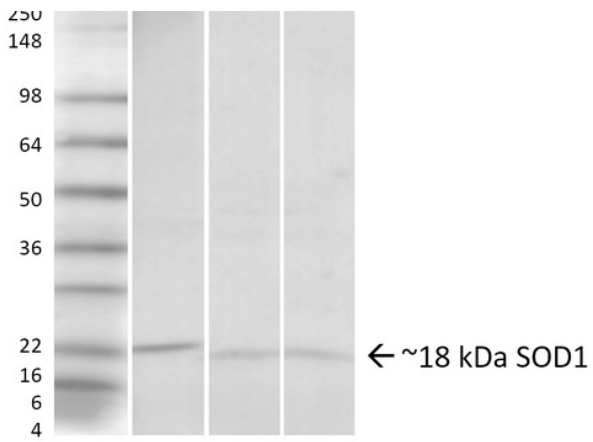
Product Images



Immunocytochemistry/Immunofluorescence analysis using Rabbit Anti-SOD1 (UBB) Polyclonal Antibody (SPC-205). Tissue: HeLa Cells. Species: Human. Fixation: 2% Formaldehyde for 20 min at RT. Primary Antibody: Rabbit Anti-SOD1 (UBB) Polyclonal Antibody (SPC-205) at 1:110 for 12 hours at 4°C. Secondary Antibody: R-PE Goat Anti-Rabbit (yellow) at 1:200 for 2 hours at RT. Counterstain: DAPI (blue) nuclear stain at 1:40000 for 2 hours at RT. Localization: Cytoplasm. Nucleus. Mitochondrion. Magnification: 100x. (A) DAPI (blue) nuclear stain. (B) Anti-SOD1 (UBB) Antibody. (C) Composite.



Western blot analysis of Human, Rat, Mouse HeLa cells, Brain, Lung showing detection of ~18 kDa SOD1 (UBB) protein using Rabbit Anti-SOD1 (UBB) Polyclonal Antibody



(SPC-205). Lane 1: Molecular Weight Ladder. Lane 2: Human HeLa Cell Lysates. Lane 3: Rat Brain. Lane 4: Mouse Lung. Load: 20 μ g. Primary Antibody: Rabbit Anti-SOD1 (UBB) Polyclonal Antibody (SPC-205) at 1:1000. Predicted/Observed Size: ~18 kDa.

Product Citations (0)

Currently there are no citations for this product.

Reviews

There are no reviews yet.