



SZABO SCANDIC

Part of Europa Biosite

Produktinformation



Forschungsprodukte & Biochemikalien



Zellkultur & Verbrauchsmaterial



Diagnostik & molekulare Diagnostik



Laborgeräte & Service

Weitere Information auf den folgenden Seiten!
See the following pages for more information!



Lieferung & Zahlungsart

siehe unsere [Liefer- und Versandbedingungen](#)

Zuschläge

- Mindermengenzuschlag
- Trockeneiszuschlag
- Gefahrgutzuschlag
- Expressversand

SZABO-SCANDIC HandelsgmbH

Quellenstraße 110, A-1100 Wien

T. +43(0)1 489 3961-0

F. +43(0)1 489 3961-7

mail@szabo-scandic.com

www.szabo-scandic.com

[linkedin.com/company/szaboscandic](https://www.linkedin.com/company/szaboscandic) 

Anti-Aquaporin 1 Antibody

Rabbit Anti-Rat Aquaporin 1 Polyclonal
Catalog No. SPC-502



Discovery through partnership | Excellence through quality

Overview

Product Name

Aquaporin 1 Antibody

Description

Rabbit Anti-Rat Aquaporin 1 Polyclonal

Species Reactivity

Human, Mouse, Rat

Applications

WB, IHC, ICC/IF

Antibody Dilution

WB (1:2000), IHC (1:200), ICC/IF (1:400); optimal dilutions for assays should be determined by the user.

Host Species

Rabbit

Immunogen Species

Rat

Immunogen

Produced against the N-terminal peptide (sequence N-MASEFKKKLF) of rat Aquaporin 1

Concentration

1 mg/ml

Conjugates

Alkaline Phosphatase, APC, ATTO 390, ATTO 488, ATTO 565, ATTO 594, ATTO 633, ATTO 655, ATTO 680, ATTO 700, Biotin, FITC, HRP, PE/ATTO 594, PerCP, RPE, Streptavidin, Unconjugated

Properties

Storage Buffer

PBS, 50% glycerol, 0.09% sodium azide

Storage Temperature

-20°C

Shipping Temperature

Blue Ice or 4°C

Purification

Protein A purified

Clonality

Polyclonal

Specificity

Detects ~28.5kDa. May detect larger glycosylated bands ~35-50kDa.

Cite This Product

Rabbit Anti-Rat Aquaporin 1 Polyclonal (StressMarq Biosciences Inc., Victoria BC CANADA, Catalog # SPC-502)

Certificate Of Analysis

0.5 µg/ml of SPC-502 was sufficient for detection of aquaporin 1 in 10 µg of rat kidney tissue lysate by colorimetric immunoblot analysis using Goat anti-rabbit IgG:HRP as the secondary antibody.

Biological Description

Alternative Names

AQP1 Antibody, AQP 1 Antibody, AQP CHIP Antibody, AQP-1 Antibody, AQP1 Antibody, AQP1_HUMAN Antibody, Aquaporin CHIP Antibody, Aquaporin-1 Antibody, Aquaporin-CHIP Antibody, Aquaporin1 Antibody, Channel forming integral protein 28kDa Antibody, Channel like integral membrane protein 28 kDa Antibody, CHIP 28 Antibody, CHIP28 Antibody, CO Antibody, Colton blood group Antibody, Growth factor induced delayed early response protein Antibody, MGC26324 Antibody, Urine water channel Antibody, Water channel protein CHIP 29 Antibody, Water channel protein CHIP29 Antibody, Water channel protein for red blood cells and kidney proximal tubule Antibody

Research Areas

Aquaporins, Ion Channels, Neuroscience

Cellular Localization

Membrane

Accession Number

NP_036910.1

Gene ID

25240

Swiss Prot

P29975

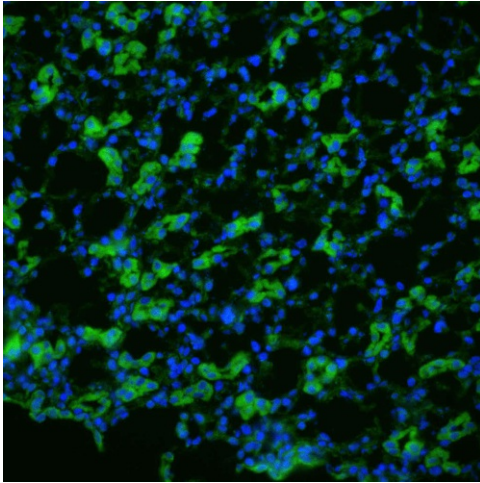
Scientific Background

Aquaporins selectively conduct water molecules in and out of the cell, while preventing the passage of ions and other solutes. Known as water channels, they are integral membrane pore proteins (1, 2). Aquaporin 1 is a widely expressed water channel, found in the basolateral and apical plasma membranes of the proximal tubules, the descending loop of Henle and in the descending portion of the vasa recta. Additionally it is found in red blood cells, vascular endothelium, gastrointestinal tract, sweat glands and lungs. It is not regulated by vasopressin (3).

References

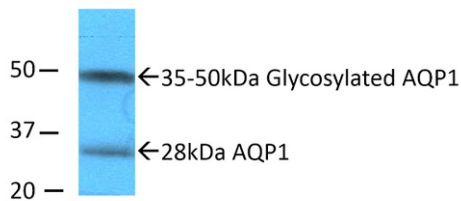
1. Gonen T., Walz T. (2006) Q. Rev. Biophys. 39(4): 361-396.
 2. Knepper M.A. (1994) Proc Natl. Acad Sci. USA. 91(14): 6255-6258.
 3. www.vivo.colostate.edu/hbooks/molecules/aquaporins.html
-

Product Images



Immunohistochemistry analysis using Rabbit Anti-Aquaporin 1 Polyclonal Antibody (SPC-502). Tissue: kidney tissue. Species: Rat. Primary Antibody: Rabbit Anti-Aquaporin 1 Polyclonal Antibody (SPC-502) at 1:200. Secondary Antibody: FITC Goat Anti-Rabbit (green).

Western blot analysis of Rat kidney inner medullary homogenates showing detection of Aquaporin 1 protein using Rabbit Anti-Aquaporin 1 Polyclonal Antibody (SPC-502). Primary Antibody: Rabbit Anti-Aquaporin 1 Polyclonal Antibody (SPC-502) at 1:2000. Showing glycosylated and non-glycosylated bands.



Product Citations (2)

Immunocytochemistry/Immunofluorescence

Role of serotonin in the regulation of renal proximal tubular epithelial cells.

Erikci, A., Ucar, G. and Yabanoglu-Ciftci, S. (2016) Ren Fail. [Epub ahead of print].

PubMed ID: 27277500 **Reactivity:** Mouse **Applications:** Immunocytochemistry/Immunofluorescence

Other Citations

Inhibition of Mitochondrial Complex-1 Restores the Downregulation of Aquaporins in Obstructive Nephropathy.

Sun, Y. et al. (2016) Am J Physiol Renal Physiol. [Epub ahead of print]

PubMed ID: 27413198

Reviews

There are no reviews yet.