



SZABO SCANDIC

Part of Europa Biosite

Produktinformation



Forschungsprodukte & Biochemikalien



Zellkultur & Verbrauchsmaterial



Diagnostik & molekulare Diagnostik



Laborgeräte & Service

Weitere Information auf den folgenden Seiten!
See the following pages for more information!



Lieferung & Zahlungsart

siehe unsere [Liefer- und Versandbedingungen](#)

Zuschläge

- Mindermengenzuschlag
- Trockeneiszuschlag
- Gefahrgutzuschlag
- Expressversand

SZABO-SCANDIC HandelsgmbH

Quellenstraße 110, A-1100 Wien

T. +43(0)1 489 3961-0

F. +43(0)1 489 3961-7

mail@szabo-scandic.com

www.szabo-scandic.com

[linkedin.com/company/szaboscandic](https://www.linkedin.com/company/szaboscandic) 

Anti-Beclin 1 Antibody

Rabbit Anti-Human Beclin 1 Polyclonal
Catalog No. SPC-601



Discovery through partnership | Excellence through quality

Overview

Product Name

Beclin 1 Antibody

Description

Rabbit Anti-Human Beclin 1 Polyclonal

Species Reactivity

Human, Rat

Applications

WB, ICC/IF

Antibody Dilution

WB (1:1000); ICC/IF (1:100); optimal dilutions for assays should be determined by the user.

Host Species

Rabbit

Immunogen Species

Human

Immunogen

Synthetic peptide from the C-terminus of human Beclin 1

Concentration

1 mg/ml

Conjugates

Alkaline Phosphatase, APC, ATTO 390, ATTO 488, ATTO 565, ATTO 594, ATTO 633, ATTO 655, ATTO 680, ATTO 700, Biotin, FITC, HRP, PE/ATTO 594, PerCP, RPE, Streptavidin, Unconjugated

Properties

Storage Buffer

PBS, 50% glycerol, 0.09% sodium azide

Storage Temperature

-20°C

Shipping Temperature

Blue Ice or 4°C

Purification

Peptide Affinity Purified

Clonality

Polyclonal

Specificity

Predicted molecular weight at ~51kDa.

Cite This Product

Rabbit Anti-Human Beclin 1 Polyclonal (StressMarq Biosciences Inc., Victoria BC CANADA, Catalog # SPC-601)

Certificate Of Analysis

A 1:1000 dilution of SPC-601 was sufficient for detection of Beclin1 on 293T lysates using Goat anti-rabbit IgG:HRP as the secondary antibody.

Biological Description

Alternative Names

APG6 Antibody, BCL-2 interacting protein beclin Antibody, Beclin 1 autophagy related Antibody, BECN1 Antibody, BECN1_HUMAN Antibody, GT197 Antibody, VPS30 Antibody

Research Areas

Cancer, Autophagy, Cell Signaling, Epigenetics

Cellular Localization

Cytoplasm, Autophagosome, Cytoplasmic Vesicle, Endoplasmic reticulum membrane, Endosome, Golgi apparatus, Mitochondrion, Mitochondrion membrane, Trans-golgi network membrane

Accession Number

NP_001300927.1

Gene ID

8678

Swiss Prot

Q14457

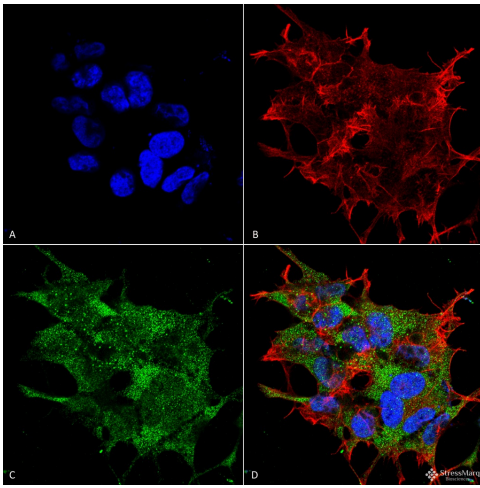
Scientific Background

Beclin 1 is the mammalian ortholog of the yeast autophagy -related gene Atg6. It regulates autophagy and has an important role in development, tumorigenesis and neurodegeneration (1). Beclin 1 is localized within cytoplasmic structures including the mitochondria, yet overexpression reveals some nuclear staining (2). Researchers have found that schizophrenia is associated with low levels of Beclin-1 in the hippocampus (3). It may also protect against infection by a neurovirulent strain of Sindbis virus (4).

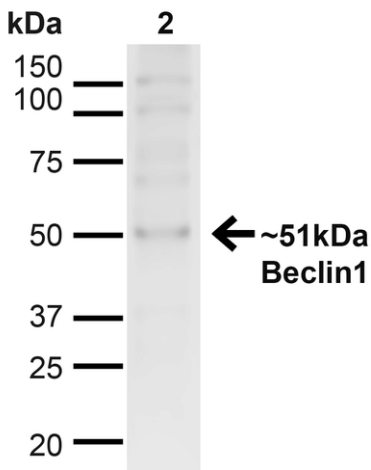
References

1. Zhong Y., et al. (2009) Nat Cell Biol. 11(4): 468-476.
 2. Liang X.H., et al. (2001) Cancer Res. 61: 3443-3449.
 3. Merenlender-Wagner A., et al. (2013) Mol. Psychiatry 20:126-132.
 4. Liang X.H., et al. (1998) J Virol. 72: 8586-8596.
-

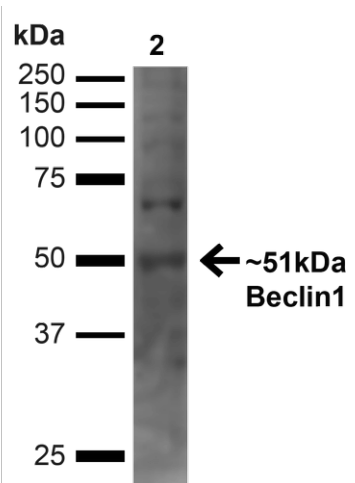
Product Images



Immunocytochemistry/Immunofluorescence analysis using Rabbit Anti-Beclin 1 Polyclonal Antibody (SPC-601). Tissue: Neuroblastoma cell line SK-N-BE. Species: Human. Fixation: 4% Formaldehyde for 15 min at RT. Primary Antibody: Rabbit Anti-Beclin 1 Polyclonal Antibody (SPC-601) at 1:100 for 60 min at RT. Secondary Antibody: Goat Anti-Rabbit ATTO 488 at 1:100 for 60 min at RT. Counterstain: Phalloidin Texas Red F-Actin stain; DAPI (blue) nuclear stain at 1:1000, 1:5000 for 60min RT, 5min RT. Localization: Golgi apparatus, Dendrites and Cell bodies of cerebellar Purkinje cells. Magnification: 60X. (A) DAPI (blue) nuclear stain (B) Phalloidin Texas Red F-Actin stain (C) Beclin 1 Antibody (D) Composite.



Western blot analysis of Human HeLa cell lysates showing detection of ~51kDa Beclin 1 protein using Rabbit Anti-Beclin 1 Polyclonal Antibody (SPC-601). Lane 1: MW Ladder. Lane 2: Human HeLa (20 μ g). Load: 20 μ g. Block: 5% milk + TBST for 1 hour at RT. Primary Antibody: Rabbit Anti-Beclin 1 Polyclonal Antibody (SPC-601) at 1:1000 for 1 hour at RT. Secondary Antibody: Goat Anti-Rabbit: HRP at 1:2000 for 1 hour at RT. Color Development: TMB solution for 12 min at RT. Predicted/Observed Size: ~51kDa.



Western blot analysis of Human 293T showing detection of ~51kDa Beclin 1 protein using Rabbit Anti-Beclin 1 Polyclonal Antibody (SPC-601). Lane 1: MW Ladder. Lane 2: Human 293T (20 μ g). Load: 20 μ g. Block: 5% milk + TBST for 1 hour at RT. Primary Antibody: Rabbit Anti-Beclin 1 Polyclonal Antibody (SPC-601) at 1:1000 for 1 hour at RT. Secondary Antibody: Goat Anti-Rabbit: HRP at 1:2000 for 1 hour at RT. Color Development: TMB solution for 12 min at RT. Predicted/Observed Size: ~51kDa.

Product Citations (0)

Currently there are no citations for this product.

Reviews

There are no reviews yet.