



SZABO SCANDIC

Part of Europa Biosite

Produktinformation



Forschungsprodukte & Biochemikalien



Zellkultur & Verbrauchsmaterial



Diagnostik & molekulare Diagnostik



Laborgeräte & Service

Weitere Information auf den folgenden Seiten!
See the following pages for more information!



Lieferung & Zahlungsart

siehe unsere [Liefer- und Versandbedingungen](#)

Zuschläge

- Mindermengenzuschlag
- Trockeneiszuschlag
- Gefahrgutzuschlag
- Expressversand

SZABO-SCANDIC HandelsgmbH

Quellenstraße 110, A-1100 Wien

T. +43(0)1 489 3961-0

F. +43(0)1 489 3961-7

mail@szabo-scandic.com

www.szabo-scandic.com

[linkedin.com/company/szaboscandic](https://www.linkedin.com/company/szaboscandic) 

Anti-GABARAP Antibody

Rabbit Anti-Human GABARAP Polyclonal
Catalog No. SPC-620



Discovery through partnership | Excellence through quality

Overview

Product Name

GABARAP Antibody

Description

Rabbit Anti-Human GABARAP Polyclonal

Species Reactivity

Human, Mouse

Applications

WB, ICC/IF

Antibody Dilution

WB (1:1000); ICC/IF (1:100); optimal dilutions for assays should be determined by the user.

Host Species

Rabbit

Immunogen Species

Human

Immunogen

Synthetic peptide from the N-terminal of human GABARAP

Concentration

1 mg/ml

Conjugates

Alkaline Phosphatase, APC, ATTO 390, ATTO 488, ATTO 565, ATTO 594, ATTO 633, ATTO 655, ATTO 680, ATTO 700, Biotin, FITC, HRP, PE/ATTO 594, PerCP, RPE, Streptavidin, Unconjugated

Properties

Storage Buffer

PBS, 50% glycerol, 0.09% sodium azide

Storage Temperature

-20°C

Shipping Temperature

Blue Ice or 4°C

Purification

Peptide Affinity Purified

Clonality

Polyclonal

Specificity

Detects ~14-16kDa.

Cite This Product

Rabbit Anti-Human GABARAP Polyclonal (StressMarq Biosciences Inc., Victoria BC CANADA, Catalog # SPC-620)

Certificate Of Analysis

A 1:1000 dilution of SPC-620 was sufficient for detection of GABARAP on mouse kidney lysates using Goat anti-rabbit IgG:HRP as the secondary antibody.

Biological Description

Alternative Names

ATG8A Antibody, GABARAP A Antibody, GABA(A) Receptor Associated Protein Antibody, MM46 Antibody

Research Areas

Cancer, Apoptosis, Autophagy, GABA Receptors, Neuroscience, Neurotransmitter Receptors

Cellular Localization

Cytoplasm, Cytoplasmic Vesicle, Cytoskeleton, Endomembrane system, Golgi apparatus, Golgi Apparatus Membrane

Accession Number

NP_009209.1

Gene ID

11337

Swiss Prot

O95166

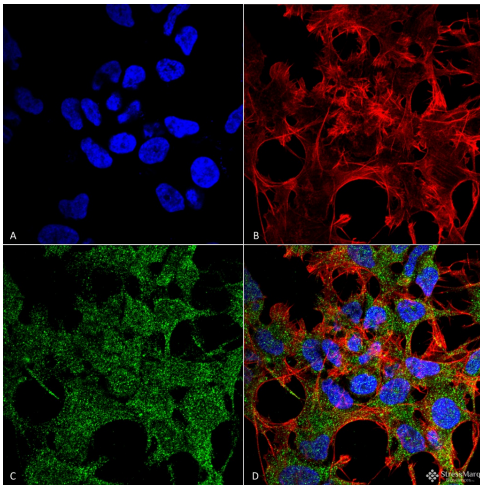
Scientific Background

Gamma-aminobutyric acid receptor-associated protein, or GABARAP, are ligand gated chloride channels that mediate inhibitory neurotransmission. It clusters neurotransmitter receptors by mediating its interaction with the cytoskeleton (1).

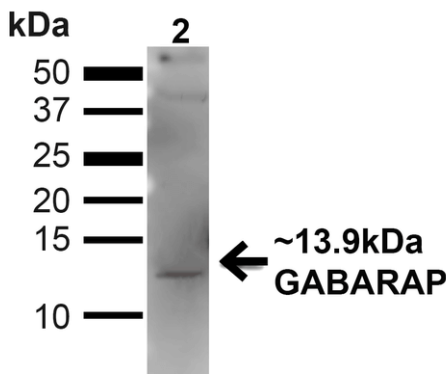
References

1. "Entrez Gene: GABARAP GABA(A) receptor-associated protein".

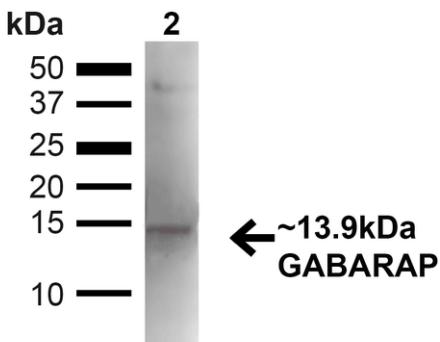
Product Images



Immunocytochemistry/Immunofluorescence analysis using Rabbit Anti-GABARAP Polyclonal Antibody (SPC-620). Tissue: Neuroblastoma cell line SK-N-BE. Species: Human. Fixation: 4% Formaldehyde for 15 min at RT. Primary Antibody: Rabbit Anti-GABARAP Polyclonal Antibody (SPC-620) at 1:100 for 60 min at RT. Secondary Antibody: Goat Anti-Rabbit ATTO 488 at 1:100 for 60 min at RT. Counterstain: Phalloidin Texas Red F-Actin stain; DAPI (blue) nuclear stain at 1:1000, 1:5000 for 60min RT, 5min RT. Localization: Endomembrane System, Cytoplasm, Golgi Apparatus Membrane, Cytoplasmic Vesicle. Magnification: 60X. (A) DAPI (blue) nuclear stain (B) Phalloidin Texas Red F-Actin stain (C) GABARAP Antibody (D) Composite.



Western blot analysis of Human 293T showing detection of ~13.9kDa GABARAP protein using Rabbit Anti-GABARAP Polyclonal Antibody (SPC-620). Lane 1: MW Ladder. Lane 2: Human 293T (20 µg). Load: 20 µg. Block: 5% milk + TBST for 1 hour at RT. Primary Antibody: Rabbit Anti-GABARAP Polyclonal Antibody (SPC-620) at 1:1000 for 1 hour at RT. Secondary Antibody: Goat Anti-Rabbit: HRP at 1:2000 for 1 hour at RT. Color Development: TMB solution for 12 min at RT. Predicted/Observed Size: ~13.9kDa. Other Band(s): ~40kDa (Complex).



Western blot analysis of Mouse Kidney showing detection of ~13.9kDa GABARAP protein using Rabbit Anti-GABARAP Polyclonal Antibody (SPC-620). Lane 1: MW Ladder. Lane 2: Mouse Kidney (20 µg). Load: 20 µg. Block: 5% milk + TBST for 1 hour at RT. Primary Antibody: Rabbit Anti-GABARAP Polyclonal Antibody (SPC-620) at 1:1000 for 1 hour at RT. Secondary Antibody: Goat Anti-Rabbit: HRP at 1:2000 for 1 hour at RT. Color Development: TMB solution for 12 min at RT. Predicted/Observed Size: ~13.9kDa. Other Band(s): ~40kDa (Complex).

Product Citations (0)

Currently there are no citations for this product.

Reviews

There are no reviews yet.