



# SZABO SCANDIC

Part of Europa Biosite

## Produktinformation



Forschungsprodukte & Biochemikalien



Zellkultur & Verbrauchsmaterial



Diagnostik & molekulare Diagnostik



Laborgeräte & Service

Weitere Information auf den folgenden Seiten!  
See the following pages for more information!



### Lieferung & Zahlungsart

siehe unsere [Liefer- und Versandbedingungen](#)

### Zuschläge

- Mindermengenzuschlag
- Trockeneiszuschlag
- Gefahrgutzuschlag
- Expressversand

### SZABO-SCANDIC HandelsgmbH

Quellenstraße 110, A-1100 Wien

T. +43(0)1 489 3961-0

F. +43(0)1 489 3961-7

[mail@szabo-scandic.com](mailto:mail@szabo-scandic.com)

[www.szabo-scandic.com](http://www.szabo-scandic.com)

[linkedin.com/company/szaboscandic](https://www.linkedin.com/company/szaboscandic) 

# Anti-ULK1 Antibody

Rabbit Anti-Human ULK1 Polyclonal  
Catalog No. SPC-640



Discovery through partnership | Excellence through quality

## Overview

---

### Product Name

ULK1 Antibody

### Description

Rabbit Anti-Human ULK1 Polyclonal

### Species Reactivity

Human, Mouse, Rat

### Applications

WB

### Antibody Dilution

WB (1:200); optimal dilutions for assays should be determined by the user.

### Host Species

Rabbit

### Immunogen Species

Human

### Immunogen

Synthetic peptide from the mid-protein of Human ULK1 (aa. 567-577)

### Concentration

1 mg/ml

### Conjugates

Alkaline Phosphatase, APC, ATTO 390, ATTO 488, ATTO 565, ATTO 594, ATTO 633, ATTO 655, ATTO 680, ATTO 700, Biotin, FITC, HRP, PE/ATTO 594, PerCP, RPE, Streptavidin, Unconjugated

## Properties

---

### Storage Buffer

PBS, 50% glycerol, 0.09% sodium azide

### Storage Temperature

-20°C

### Shipping Temperature

Blue Ice or 4°C

### Purification

---

Peptide Affinity Purified

---

### Clonality

Polyclonal

---

### Specificity

Detects ~100 kDa.

---

### Cite This Product

Rabbit Anti-Human ULK1 Polyclonal (StressMarq Biosciences Inc., Victoria BC CANADA, Catalog # SPC-640)

---

### Certificate Of Analysis

A 1:200 dilution of SPC-640 was sufficient for detection of ULK1 in 15 µg of Human HeLa Cell Lysates by ECL immunoblot analysis using goat anti-rabbit IgG:HRP as the secondary antibody.

---

## Biological Description

---

### Alternative Names

Unc-51 like kinase 1 (C. elegans) Antibody, Autophagy related protein 1 homolog Antibody, Autophagy-related protein 1 homolog Antibody, FLJ38455 Antibody, Serine/threonine-protein kinase ULK1 Antibody, Unc51.1 Antibody, ATG1A Antibody, UNC51, C. elegans, homolog of Antibody, EC:2.7.11.1 Antibody, Serine/threonine protein kinase Unc51.1 Antibody, FLJ46475 Antibody, ATG 1 Antibody, hATG1 Antibody, ATG1 Antibody, Unc-51-like kinase 1 Antibody, Serine/threonine protein kinase ULK1 Antibody, ULK1 Antibody, Unc 51 like kinase 1 Antibody, KIAA0722 Antibody, UNC 51 Antibody, ULK 1 Antibody, ULK1\_HUMAN Antibody, UNC51 Antibody, Unc 51 (C. elegans) like kinase 1 Antibody, ATG1 autophagy related 1 homolog Antibody,

---

### Research Areas

Cancer, Autophagy, Cardiovascular System, Cell Signaling, Heart, Neuroscience

---

### Cellular Localization

Cytoplasm, Cytosol, Preautophagosomal structure

---

### Accession Number

NP\_003556.1

---

### Gene ID

8408

---

### Swiss Prot

O75385

---

### Scientific Background

UNC-51 like kinase 1 (ULK1) is widely expressed and contains an amino-terminal kinase domain followed by a central proline-serine rich domain and a highly conserved carboxy-terminal domain. It has been linked to axon growth and is essential for autophagy. Structurally, ULK1 is similar to ATG1, and it appears that both Atg1/ULK1 can bind to several ATG proteins regulating phosphorylation states and protein trafficking.

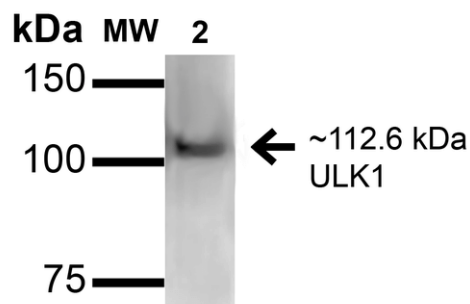
---

### References

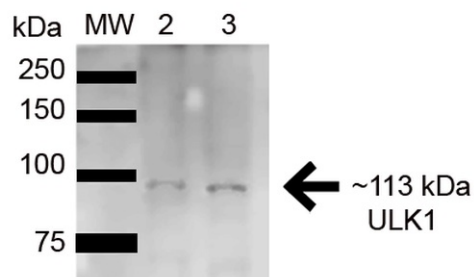
1. Okazaki N., et al. (2000) Brain Res Mol Brain Res. 85: 1-12.
  2. Young A.R., et al. (2006) J Cell Sci. 119: 3888-900.
  3. Kamada Y., et al. (2000) J Cell Biol. 150: 1507-13.
  4. Lee S.B, et al. (2007) EMBO Rep. 8: 360-5.
  5. Hara T., et al. (2008) J Cell Biol. 181: 497-510.
-

## Product Images

---



Western blot analysis of Human HeLa and 293Trap cell lysates showing detection of 112.6 kDa ULK1 protein using Rabbit Anti-ULK1 Polyclonal Antibody (SPC-640). Lane 1: Molecular Weight Ladder (MW). Lane 2: Human HeLa and 293Trap cell lysates. Load: 15 µg. Block: 5% Skim Milk in 1X TBST. Primary Antibody: Rabbit Anti-ULK1 Polyclonal Antibody (SPC-640) at 1:1000 for 1 hour at RT. Secondary Antibody: Goat Anti-Rabbit HRP at 1:2000 for 60 min at RT. Color Development: ECL solution for 6 min in RT. Predicted/Observed Size: 112.6 kDa.



Western blot analysis of Rat Brain cell lysates showing detection of ~113 kDa ULK1 protein using Rabbit Anti-ULK1 Polyclonal Antibody (SPC-640). Lane 1: Molecular Weight Ladder (MW). Lane 2: Rat Brain cell lysates. Load: 15 µg. Block: 2% GE Healthcare Blocker (RT, 60 minutes). Primary Antibody: Rabbit Anti-ULK1 Polyclonal Antibody (SPC-640) at 1:1000 for 16 hours at 4°C. Secondary Antibody: Goat Anti-Rabbit IgG: HRP at 1/2000 for 60 min at RT. Color Development: ECL solution for 6 min at RT. Predicted/Observed Size: ~112.6kDa.

## Product Citations (0)

---

Currently there are no citations for this product.

## Reviews

---

There are no reviews yet.