



# SZABO SCANDIC

Part of Europa Biosite

## Produktinformation



Forschungsprodukte & Biochemikalien



Zellkultur & Verbrauchsmaterial



Diagnostik & molekulare Diagnostik



Laborgeräte & Service

Weitere Information auf den folgenden Seiten!  
See the following pages for more information!



### Lieferung & Zahlungsart

siehe unsere [Liefer- und Versandbedingungen](#)

### Zuschläge

- Mindermengenzuschlag
- Trockeneiszuschlag
- Gefahrgutzuschlag
- Expressversand

### SZABO-SCANDIC HandelsgmbH

Quellenstraße 110, A-1100 Wien

T. +43(0)1 489 3961-0

F. +43(0)1 489 3961-7

[mail@szabo-scandic.com](mailto:mail@szabo-scandic.com)

[www.szabo-scandic.com](http://www.szabo-scandic.com)

[linkedin.com/company/szaboscandic](https://www.linkedin.com/company/szaboscandic) 

# Anti-Choline Acetyltransferase Antibody

Rabbit Anti-Human Choline Acetyltransferase Polyclonal  
Catalog No. SPC-706



Discovery through partnership | Excellence through quality

## Overview

---

### Product Name

Choline Acetyltransferase Antibody

### Description

Rabbit Anti-Human Choline Acetyltransferase Polyclonal

### Species Reactivity

Human, Mouse

### Applications

WB, ICC/IF

### Antibody Dilution

WB (1:1000); ICC/IF (1:100); optimal dilutions for assays should be determined by the user.

### Host Species

Rabbit

### Immunogen Species

Human

### Immunogen

Synthetic peptide from the N-terminal to the mid-protein of human Choline O-Acetyltransferase

### Concentration

1 mg/ml

### Conjugates

Alkaline Phosphatase, APC, ATTO 390, ATTO 488, ATTO 565, ATTO 594, ATTO 633, ATTO 655, ATTO 680, ATTO 700, Biotin, FITC, HRP, PE/ATTO 594, PerCP, RPE, Streptavidin, Unconjugated

## Properties

---

### Storage Buffer

PBS, 50% glycerol, 0.09% sodium azide

### Storage Temperature

-20°C

### Shipping Temperature

Blue Ice or 4°C

### Purification

---

Peptide Affinity Purified

---

### Clonality

Polyclonal

---

### Specificity

Predicted molecular weight at ~82.5kDa. Observed molecular weights between 68-70kDa.

---

### Cite This Product

Rabbit Anti-Human Choline Acetyltransferase Polyclonal (StressMarq Biosciences Inc., Victoria BC CANADA, Catalog # SPC-706)

---

### Certificate Of Analysis

A 1:1000 dilution of SPC-706 was sufficient for detection of Choline Acetyltransferase on mouse brain lysates using Goat anti-rabbit IgG:HRP as the secondary antibody.

---

## Biological Description

---

### Alternative Names

CHAT\_Human Antibody, Acetyl CoA choline O Acetyltransferase Antibody, Choline Acetylase Antibody, CLAT\_Human Antibody, CMS1A Antibody

---

### Research Areas

Alzheimer's Disease, Cell Signaling, Neurodegeneration, Neuroscience, Neurotransmitter Receptors

---

### Cellular Localization

Cytoplasm, Cytosol, Mitochondrion, Nucleus

---

### Accession Number

NP\_001136401.1

---

### Gene ID

1103

---

### Swiss Prot

P28329

---

### Scientific Background

Acetylcholine (ACh) is a common neurotransmitter for motoneurons, preganglionic autonomic neurons, postganglionic parasympathetic neurons, a variety of brain regions and some emerging neuron-like stem cells. The metabolism of ACh is relatively simple, involving only two enzymes: choline acetyltransferase (ChAT) for synthesis and acetylcholinesterase (AChE) for degradation. Further, acetylcholine has little function in neurons other than neurotransmission and seems to be neuron specific. It seems that only cholinergic neurons have significant amounts of ChAT making anti-choline acetyltransferase a useful specific marker. ChAT is a valuable marker for diseases associated with decreased cholinergic function such as Schizophrenia, Alzheimer disease and Down syndrome (1-3).

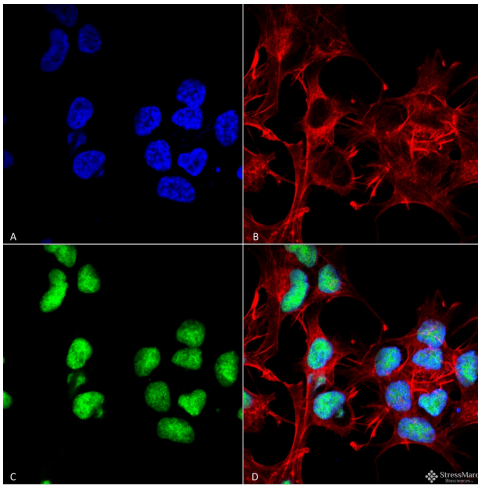
---

### References

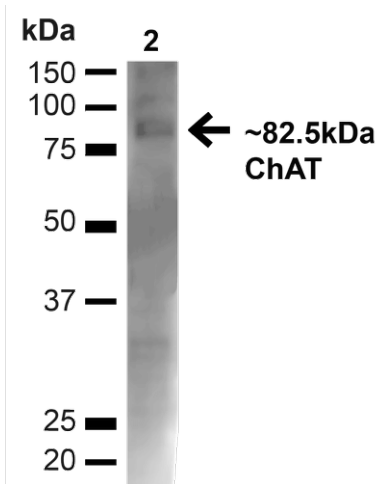
1. Houser C.R., Crawford G.D., Barber R.P., Salvaterra P.M., Vaughn J.E. (1983) Brain Research. 266(1): 97-119.
  2. Karson C.N., Casanova M.F., Kleinman J.E., Griffin W.S. (1993) Am J Psychiatry. 150: 454-459.
  3. Baskins D.S., et al. (1999) Arch Neurol. 56: 1121-1123.
- 

## Product Images

---



Immunocytochemistry/Immunofluorescence analysis using Rabbit Anti-Choline Acetyltransferase Polyclonal Antibody (SPC-706). Tissue: Neuroblastoma cell line SK-N-BE. Species: Human. Fixation: 4% Formaldehyde for 15 min at RT. Primary Antibody: Rabbit Anti-Choline Acetyltransferase Polyclonal Antibody (SPC-706) at 1:100 for 60 min at RT. Secondary Antibody: Goat Anti-Rabbit ATTO 488 at 1:100 for 60 min at RT. Counterstain: Phalloidin Texas Red F-Actin stain; DAPI (blue) nuclear stain at 1:1000, 1:5000 for 60min RT, 5min RT. Localization: Nucleus. Magnification: 60X. (A) DAPI (blue) nuclear stain (B) Phalloidin Texas Red F-Actin stain (C) Choline Acetyltransferase Antibody (D) Composite.



Western blot analysis of Mouse Brain showing detection of ~82.5kDa Choline Acetyltransferase protein using Rabbit Anti-Choline Acetyltransferase Polyclonal Antibody (SPC-706). Lane 1: MW Ladder. Lane 2: Mouse Brain (20 µg). Load: 20 µg. Block: 5% milk + TBST for 1 hour at RT. Primary Antibody: Rabbit Anti-Choline Acetyltransferase Polyclonal Antibody (SPC-706) at 1:1000 for 1 hour at RT. Secondary Antibody: Goat Anti-Rabbit: HRP at 1:2000 for 1 hour at RT. Color Development: TMB solution for 12 min at RT. Predicted/Observed Size: ~82.5kDa.

## Product Citations (0)

Currently there are no citations for this product.

## Reviews

There are no reviews yet.