



SZABO SCANDIC

Part of Europa Biosite

Produktinformation



Forschungsprodukte & Biochemikalien



Zellkultur & Verbrauchsmaterial



Diagnostik & molekulare Diagnostik



Laborgeräte & Service

Weitere Information auf den folgenden Seiten!
See the following pages for more information!



Lieferung & Zahlungsart

siehe unsere [Liefer- und Versandbedingungen](#)

Zuschläge

- Mindermengenzuschlag
- Trockeneiszuschlag
- Gefahrgutzuschlag
- Expressversand

SZABO-SCANDIC HandelsgmbH

Quellenstraße 110, A-1100 Wien

T. +43(0)1 489 3961-0

F. +43(0)1 489 3961-7

mail@szabo-scandic.com

www.szabo-scandic.com

[linkedin.com/company/szaboscandic](https://www.linkedin.com/company/szaboscandic) 

Alpha Synuclein Protein

Human Recombinant Alpha Synuclein Full Length Protein
Catalog No. SPR-316



Discovery through partnership | Excellence through quality

Overview

Product Name

Alpha Synuclein Protein

Description

Human Recombinant Alpha Synuclein Full Length Protein

Applications

WB, SDS-PAGE

Concentration

1.1 mg/ml

Conjugates

No tag

Nature

Recombinant

Species

Human

Expression System

E. coli

Amino Acid Sequence

MDVFMKGLSK AKEGWAAA KTKQGVAAA GKTKEGVLYV GSKTKEGVH GVATVAEKT EQVTNVGGAV VTGVTAVAQK TVEGAGSIAA ATGFVK
KDQL GKNEEGAPQE GILEDMPVDP DNEAYEMPSE EGYQDYEPEA

Protein Length

Full Length

Properties

Storage Buffer

0.2µm filtered solution in 20mM tris, 150mM NaCl pH7.5

Storage Temperature

-80°C

Shipping Temperature

Blue Ice or 4°C

Purification

Ion-exchange Purified

Specificity

~14.46kDa

Cite This Product

Human Recombinant Alpha Synuclein Protein (StressMarq Biosciences Inc., Victoria BC CANADA, Catalog # SPR-316)

Certificate Of Analysis

This product has been certified 92% pure using SDSPAGE analysis.

Other Relevant Information

Endotoxin below 1EU/μg as determined by LAL assay.

Biological Description

Alternative Names

Alpha Synuclein Protein, AlphaSyn Protein, NACP Protein, Non A4 component of amyloid Protein, PARK1 Protein, PARK4 Protein, SNCA Protein, SYN Protein, Parkinson disease familial 1 Protein

Research Areas

Alzheimer's Disease, Neurodegeneration, Neuroscience, Parkinson's Disease

Cellular Localization

Cytoplasm, Membrane, Nucleus

Accession Number

NP_000336.1

Gene ID

6622

Swiss Prot

P37840

Scientific Background

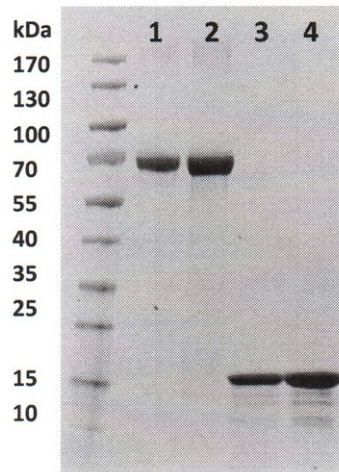
Alpha-Synuclein (SNCA) is expressed predominantly in the brain, where it is concentrated in presynaptic nerve terminals (1). Alpha-synuclein is highly expressed in the mitochondria of the olfactory bulb, hippocampus, striatum and thalamus (2). Functionally, it has been shown to significantly interact with tubulin (3), and may serve as a potential microtubule-associated protein. It has also been found to be essential for normal development of the cognitive functions; inactivation may lead to impaired spatial learning and working memory (4).

SNCA fibrillar aggregates represent the major non A-beta component of Alzheimers disease amyloid plaque, and a major component of Lewy body inclusions, and Parkinson's disease. Parkinson's disease (PD) is a common neurodegenerative disorder characterized by the progressive accumulation in selected neurons of protein inclusions containing alpha-synuclein and ubiquitin (5, 6).

References

1. "Genetics Home Reference: SNCA". US National Library of Medicine. (2013).
 2. Zhang L., et al. (2008) Brain Res. 1244: 40-52.
 3. Alim M.A., et al. (2002) J Biol Chem. 277(3): 2112-2117.
 4. Kokhan V.S., Afanasyeva M.A., Van'kin G. (2012) Behav. Brain. Res. 231(1): 226-230.
 5. Spillantini M.G., et al. (1997) Nature. 388(6645): 839-840.
 6. Mezey E., et al. (1998) Nat Med. 4(7): 755-757.
-

Product Images



SDS-PAGE of ~15kDa human Alpha Synuclein protein (SPR-316).

Product Citations (0)

Currently there are no citations for this product.

Reviews

There are no reviews yet.