



SZABO SCANDIC

Part of Europa Biosite

Produktinformation



Forschungsprodukte & Biochemikalien



Zellkultur & Verbrauchsmaterial



Diagnostik & molekulare Diagnostik



Laborgeräte & Service

Weitere Information auf den folgenden Seiten!
See the following pages for more information!



Lieferung & Zahlungsart

siehe unsere [Liefer- und Versandbedingungen](#)

Zuschläge

- Mindermengenzuschlag
- Trockeneiszuschlag
- Gefahrgutzuschlag
- Expressversand

SZABO-SCANDIC HandelsgmbH

Quellenstraße 110, A-1100 Wien

T. +43(0)1 489 3961-0

F. +43(0)1 489 3961-7

mail@szabo-scandic.com

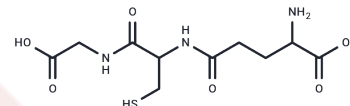
www.szabo-scandic.com

[linkedin.com/company/szaboscandic](https://www.linkedin.com/company/szaboscandic) 

L-Glutathione reduced

Chemical Properties

CAS No. :	70-18-8
Formula:	C10H17N3O6S
Molecular Weight:	307.32
Appearance:	no data available
Storage:	keep away from direct sunlight Powder: -20°C for 3 years In solvent: -80°C for 1 year



Biological Description

Description	L-Glutathione reduced (Glutathione) is a naturally occurring tripeptide found in cells as an endogenous antioxidant that scavenges oxygen free radicals. L-Glutathione reduced is a cofactor for certain enzymes and is involved in the rearrangement of protein disulfide bonds and the reduction of peroxides.
Targets(IC50)	Ferroptosis, Reactive Oxygen Species, Endogenous Metabolite, Glutathione reductase
In vitro	METHODS: NSCs cells were treated with L-Glutathione reduced (0.5 mM) and sevoflurane (3%) for 24 h. Apoptosis was detected using TUNEL staining. RESULTS: Supplementation with reduced L-Glutathione reduced the effect of sevoflurane on apoptosis of NSCs. [1]
In vivo	METHODS: To study in vivo activity, L-Glutathione reduced (100 mg/kg) was administered orally to mice and GSH concentrations were measured in plasma at 30, 45, and 60 min, and in the liver, kidneys, heart, lungs, brain, small intestine, and skin 1 h later. RESULTS: Within 30 min of oral L-Glutathione reduced administration, plasma GSH concentrations increased from 30 μ M to 75 μ M, consistent with a rapid flow of GSH from the intestinal lumen to the plasma. Under these conditions of GSH sufficiency, GSH concentrations in most tissues did not exceed control values over the same time course, with the exception of lung. [2]

Solubility Information

Solubility	DMSO: Insoluble, The compound is unstable in solution. Please use soon. H2O: 153.7 mg/mL (500 mM) (< 1 mg/ml refers to the product slightly soluble or insoluble)
------------	--

Preparing Stock Solutions

	1mg	5mg	10mg
1 mM	3.2539 mL	16.2697 mL	32.5394 mL
5 mM	0.6508 mL	3.2539 mL	6.5079 mL
10 mM	0.3254 mL	1.627 mL	3.2539 mL
50 mM	0.0651 mL	0.3254 mL	0.6508 mL

Please select the appropriate solvent to prepare the stock solution, according to the solubility of the product in different solvents. Please use it as soon as possible.

Reference

Fan P, Lu Y, Wei H, et al. Metformin attenuates sevoflurane-induced neurogenesis damage and cognitive impairment: involvement of the Nrf2/G6PD pathway. *Metabolic Brain Disease*. 2023: 1-17.

Inhibitor · Natural Compounds · Compound Libraries · Recombinant Proteins

This product is for Research Use Only · Not for Human or Veterinary or Therapeutic Use

Tel: 781-999-4286 E_mail: info@targetmol.com Address: 36 Washington Street, Wellesley Hills, MA 02481