



# SZABO SCANDIC

Part of Europa Biosite

## Produktinformation



Forschungsprodukte & Biochemikalien



Zellkultur & Verbrauchsmaterial



Diagnostik & molekulare Diagnostik



Laborgeräte & Service

Weitere Information auf den folgenden Seiten!  
See the following pages for more information!



### Lieferung & Zahlungsart

siehe unsere [Liefer- und Versandbedingungen](#)

### Zuschläge

- Mindermengenzuschlag
- Trockeneiszuschlag
- Gefahrgutzuschlag
- Expressversand

### SZABO-SCANDIC HandelsgmbH

Quellenstraße 110, A-1100 Wien

T. +43(0)1 489 3961-0

F. +43(0)1 489 3961-7

[mail@szabo-scandic.com](mailto:mail@szabo-scandic.com)

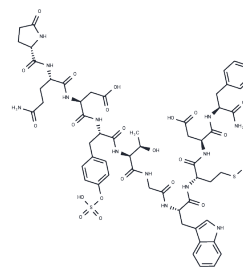
[www.szabo-scandic.com](http://www.szabo-scandic.com)

[linkedin.com/company/szaboscandic](https://www.linkedin.com/company/szaboscandic) 

## Ceruletide

## Chemical Properties

CAS No. :	17650-98-5
Formula:	C <sub>58</sub> H <sub>73</sub> N <sub>13</sub> O <sub>21</sub> S <sub>2</sub>
Molecular Weight:	1352.4
Appearance:	no data available
Storage:	keep away from moisture Powder: -20°C for 3 years   In solvent: -80°C for 1 year



## Biological Description

Description	Ceruletide (Caerulein) is a potent agonist of cholecystinin receptor and it also is a safe and effective cholecystkinetic agent. It has a direct spasmogenic effect on the gallbladder muscle and bile ducts.
Targets(IC50)	cholecystkinin
In vitro	Ceruletide is the same as biologically and chemically to the human gastrointestinal hormones cholecystkinin-pancreozymin (CCK) and gastrin II. Ceruletide stimulates gallbladder contraction while delaying gastric emptying and inhibiting motility in the proximal duodenum [1]. Ceruletide in supramaximal but not in physiological doses activate NF-kappaB/Rel in vitro. This activation may induce a self-defending genetic program before the onset of cellular injury and may prevent higher degrees of damage of pancreatic acinar cells after secretagogue hyperstimulation [2].
In vivo	Ceruletide (5-15 ng/kg, i.v.) shows a marked spasmogenic effect on the pylorus of rats. Ceruletide also reduces blood pressure in anesthetized dogs [1]. Ceruletide (0.4-0.5 mcg/kg, i.v.; 3-4 mcg/kg, s.c.) results in emesis and evacuation of the bowel in the intact conscious dog, and recovery is complete 15-30 min after i. v. administration and 2-4 hr after s.c. administration. Ceruletide SBA stimulation may perform as well as PP SBA stimulation in dogs with the portosystemic shunt and be more sensitive for the detection of hepatic dysfunction in dogs with the upper respiratory disease [3].

## Solubility Information

Solubility	DMSO: 96 mg/mL (70.98 mM), H <sub>2</sub> O: 100 mg/mL (73.94 mM), (< 1 mg/ml refers to the product slightly soluble or insoluble)
------------	--

### Preparing Stock Solutions

---

	1mg	5mg	10mg
1 mM	0.7394 mL	3.6971 mL	7.3943 mL
5 mM	0.1479 mL	0.7394 mL	1.4789 mL
10 mM	0.0739 mL	0.3697 mL	0.7394 mL
50 mM	0.0148 mL	0.0739 mL	0.1479 mL

---

Please select the appropriate solvent to prepare the stock solution, according to the solubility of the product in different solvents. Please use it as soon as possible.

### Reference

Li M, Yuan Y, Han X, et al. Antioxidant Mitoquinone Alleviates Chronic Pancreatitis via Anti-Fibrotic and Antioxidant Effects. *Journal of Inflammation Research*. 2022, 15: 4409

**Inhibitor · Natural Compounds · Compound Libraries · Recombinant Proteins**

This product is for Research Use Only · Not for Human or Veterinary or Therapeutic Use

Tel:781-999-4286 E\_mail:info@targetmol.com Address:36 Washington Street,Wellesley Hills,MA 02481