



# SZABO SCANDIC

Part of Europa Biosite

## Produktinformation



Forschungsprodukte & Biochemikalien



Zellkultur & Verbrauchsmaterial



Diagnostik & molekulare Diagnostik



Laborgeräte & Service

Weitere Information auf den folgenden Seiten!  
See the following pages for more information!



### Lieferung & Zahlungsart

siehe unsere [Liefer- und Versandbedingungen](#)

### Zuschläge

- Mindermengenzuschlag
- Trockeneiszuschlag
- Gefahrgutzuschlag
- Expressversand

### SZABO-SCANDIC HandelsgmbH

Quellenstraße 110, A-1100 Wien

T. +43(0)1 489 3961-0

F. +43(0)1 489 3961-7

[mail@szabo-scandic.com](mailto:mail@szabo-scandic.com)

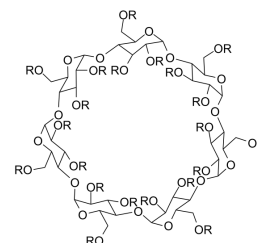
[www.szabo-scandic.com](http://www.szabo-scandic.com)

[linkedin.com/company/szaboscandic](https://www.linkedin.com/company/szaboscandic) 

SBE- $\beta$ -CD

## Chemical Properties

CAS No. :	182410-00-0
Formula:	
Molecular Weight:	
Appearance:	no data available
Storage:	keep away from direct sunlight Powder: -20°C for 3 years   In solvent: -80°C for 1 year



## Biological Description

Description	SBE- $\beta$ -CD (Sulfobutylether- $\beta$ -Cyclodextrin) is a $\beta$ -cyclodextrin derivative with a sodium sulfonate salt separated from the lipophilic cavity by a butyl ether spacer group, or sulfobutylether. SBE- $\beta$ -CD is widely used as a co-solvent in biological experiments.
Targets(IC50)	Others
In vivo	<b>METHODS:</b> To study in vivo activity, MR-L2 (300 nl; 2 $\times$ 10 <sup>-4</sup> M; 1:20, DMSO in 20% SBE- $\beta$ -CD) was microinfused into rat NAcS. <b>RESULTS:</b> MR-L2 significantly reduced inactive pressor pressures, whereas control administration of SBE- $\beta$ -CD had no effect. [1]

## Solubility Information

Solubility	H2O: 250 mg/mL, Sonication is recommended. DMSO: 5.625 mg/mL, Sonication and heating are recommended. (< 1 mg/ml refers to the product slightly soluble or insoluble)
------------	---

## Reference

Sharp B M, Jiang Q, Kim P, et al. Inactivation of phosphodiesterase-4B gene in rat nucleus accumbens shell by CRISPR/Cas9 modulates the motivation to chronically self-administer nicotine. bioRxiv.2023: 2023.03. 07.531588.

Inhibitor · Natural Compounds · Compound Libraries · Recombinant Proteins

This product is for Research Use Only · Not for Human or Veterinary or Therapeutic Use

Tel: 781-999-4286 E\_mail: info@targetmol.com Address: 36 Washington Street, Wellesley Hills, MA 02481