



SZABO SCANDIC

Part of Europa Biosite

Produktinformation



Forschungsprodukte & Biochemikalien



Zellkultur & Verbrauchsmaterial



Diagnostik & molekulare Diagnostik



Laborgeräte & Service

Weitere Information auf den folgenden Seiten!
See the following pages for more information!



Lieferung & Zahlungsart

siehe unsere [Liefer- und Versandbedingungen](#)

Zuschläge

- Mindermengenzuschlag
- Trockeneiszuschlag
- Gefahrgutzuschlag
- Expressversand

SZABO-SCANDIC HandelsgmbH

Quellenstraße 110, A-1100 Wien

T. +43(0)1 489 3961-0

F. +43(0)1 489 3961-7

mail@szabo-scandic.com

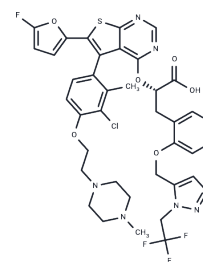
www.szabo-scandic.com

[linkedin.com/company/szaboscandic](https://www.linkedin.com/company/szaboscandic) 

S63845

Chemical Properties

CAS No. :	1799633-27-4
Formula:	C ₃₉ H ₃₇ ClF ₄ N ₆ O ₆ S
Molecular Weight:	829.26
Appearance:	no data available
Storage:	store at low temperature Powder: -20°C for 3 years In solvent: -80°C for 1 year



Biological Description

Description	S63845 is a selective MCL-1 inhibitor(Kd: 0.19 nM)
Targets(IC50)	BCL
In vitro	S63845, a small molecule that specifically binds with high affinity to the BH3-binding groove of MCL1. S63845 potently kills MCL1-dependent cancer cells, including multiple myeloma, leukaemia and lymphoma cells, by activating the BAX/BAK-dependent mitochondrial apoptotic pathway[1].
In vivo	In vivo, S63845 shows potent anti-tumour activity with an acceptable safety margin as a single agent in several cancers. Moreover, MCL1 inhibition, either alone or in combination with other anti-cancer drugs, proved effective against several solid cancer-derived cell lines. MCL1 as a target for the treatment of a wide range of tumours[1].

Solubility Information

Solubility	DMSO: 33.33 mg/mL (40.19 mM), Sonication is recommended. (< 1 mg/ml refers to the product slightly soluble or insoluble)
------------	---

Preparing Stock Solutions

	1mg	5mg	10mg
1 mM	1.2059 mL	6.0295 mL	12.0589 mL
5 mM	0.2412 mL	1.2059 mL	2.4118 mL
10 mM	0.1206 mL	0.6029 mL	1.2059 mL
50 mM	0.0241 mL	0.1206 mL	0.2412 mL

Please select the appropriate solvent to prepare the stock solution, according to the solubility of the product in different solvents. Please use it as soon as possible.

Reference

Li Y, Lee H H, Jiang V C, et al. Potentiation of apoptosis in drug-resistant mantle cell lymphoma cells by MCL-1 inhibitor involves downregulation of inhibitor of apoptosis proteins. *Cell Death & Disease*. 2023, 14(11): 714.

Inhibitor · Natural Compounds · Compound Libraries · Recombinant Proteins

This product is for Research Use Only · Not for Human or Veterinary or Therapeutic Use

Tel: 781-999-4286 E_mail: info@targetmol.com Address: 36 Washington Street, Wellesley Hills, MA 02481