



SZABO SCANDIC

Part of Europa Biosite

Produktinformation



Forschungsprodukte & Biochemikalien



Zellkultur & Verbrauchsmaterial



Diagnostik & molekulare Diagnostik



Laborgeräte & Service

Weitere Information auf den folgenden Seiten!
See the following pages for more information!



Lieferung & Zahlungsart

siehe unsere [Liefer- und Versandbedingungen](#)

Zuschläge

- Mindermengenzuschlag
- Trockeneiszuschlag
- Gefahrgutzuschlag
- Expressversand

SZABO-SCANDIC HandelsgmbH

Quellenstraße 110, A-1100 Wien

T. +43(0)1 489 3961-0

F. +43(0)1 489 3961-7

mail@szabo-scandic.com

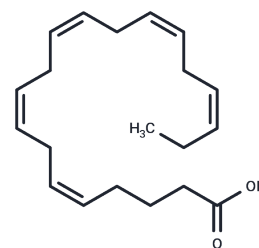
www.szabo-scandic.com

[linkedin.com/company/szaboscandic](https://www.linkedin.com/company/szaboscandic) 

Eicosapentaenoic Acid

Chemical Properties

CAS No. :	10417-94-4
Formula:	C ₂₀ H ₃₀ O ₂
Molecular Weight:	302.45
Appearance:	no data available
Storage:	Powder: -20°C for 3 years In solvent: -80°C for 1 year



Biological Description

Description	Eicosapentaenoic Acid (EPA) is a ω -3 fatty acid abundantly available in marine organisms.
Targets(IC50)	Histone Demethylase,Others,Endogenous Metabolite

Solubility Information

Solubility	DMSO: 100 mg/mL (330.63 mM),Sonication is recommended. Ethanol: 50 mg/mL (165.32 mM),Sonication is recommended. (< 1 mg/ml refers to the product slightly soluble or insoluble)
------------	--

Preparing Stock Solutions

	1mg	5mg	10mg
1 mM	3.3063 mL	16.5317 mL	33.0633 mL
5 mM	0.6613 mL	3.3063 mL	6.6127 mL
10 mM	0.3306 mL	1.6532 mL	3.3063 mL
50 mM	0.0661 mL	0.3306 mL	0.6613 mL

Please select the appropriate solvent to prepare the stock solution, according to the solubility of the product in different solvents. Please use it as soon as possible.

Reference

Wada M, et al. Enzymes and receptors of prostaglandin pathways with arachidonic acid-derived versus eicosapentaenoic acid-derived substrates and products. J Biol Chem. 2007 Aug 3;282(31):22254-66.

Inhibitor · Natural Compounds · Compound Libraries · Recombinant Proteins

This product is for Research Use Only · Not for Human or Veterinary or Therapeutic Use

Tel:781-999-4286 E_mail:info@targetmol.com Address:36 Washington Street,Wellesley Hills,MA 02481