



# SZABO SCANDIC

Part of Europa Biosite

## Produktinformation



Forschungsprodukte & Biochemikalien



Zellkultur & Verbrauchsmaterial



Diagnostik & molekulare Diagnostik



Laborgeräte & Service

Weitere Information auf den folgenden Seiten!  
See the following pages for more information!



### Lieferung & Zahlungsart

siehe unsere [Liefer- und Versandbedingungen](#)

### Zuschläge

- Mindermengenzuschlag
- Trockeneiszuschlag
- Gefahrgutzuschlag
- Expressversand

### SZABO-SCANDIC HandelsgmbH

Quellenstraße 110, A-1100 Wien

T. +43(0)1 489 3961-0

F. +43(0)1 489 3961-7

[mail@szabo-scandic.com](mailto:mail@szabo-scandic.com)

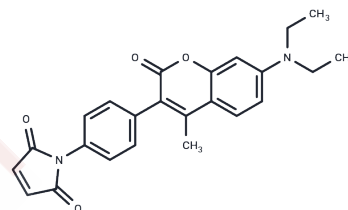
[www.szabo-scandic.com](http://www.szabo-scandic.com)

[linkedin.com/company/szaboscandic](https://www.linkedin.com/company/szaboscandic) 

## CPM

## Chemical Properties

CAS No. :	76877-33-3
Formula:	C <sub>24</sub> H <sub>22</sub> N <sub>2</sub> O <sub>4</sub>
Molecular Weight:	402.44
Appearance:	no data available
Storage:	Powder: -20°C for 3 years   In solvent: -80°C for 1 year



## Biological Description

Description	CPM, a maleimide derivative, acts as a blue fluorescent thiol-reactive dye with excitation/emission maxima of 384/470 nm [1].
-------------	---

## Preparing Stock Solutions

	1mg	5mg	10mg
1 mM	2.4848 mL	12.4242 mL	24.8484 mL
5 mM	0.497 mL	2.4848 mL	4.9697 mL
10 mM	0.2485 mL	1.2424 mL	2.4848 mL
50 mM	0.0497 mL	0.2485 mL	0.497 mL

Please select the appropriate solvent to prepare the stock solution, according to the solubility of the product in different solvents. Please use it as soon as possible.

Inhibitor · Natural Compounds · Compound Libraries · Recombinant Proteins

This product is for Research Use Only · Not for Human or Veterinary or Therapeutic Use

Tel:781-999-4286 E\_mail:info@targetmol.com Address:36 Washington Street,Wellesley Hills,MA 02481