



SZABO SCANDIC

Part of Europa Biosite

Produktinformation



Forschungsprodukte & Biochemikalien



Zellkultur & Verbrauchsmaterial



Diagnostik & molekulare Diagnostik



Laborgeräte & Service

Weitere Information auf den folgenden Seiten!
See the following pages for more information!



Lieferung & Zahlungsart

siehe unsere [Liefer- und Versandbedingungen](#)

Zuschläge

- Mindermengenzuschlag
- Trockeneiszuschlag
- Gefahrgutzuschlag
- Expressversand

SZABO-SCANDIC HandelsgmbH

Quellenstraße 110, A-1100 Wien

T. +43(0)1 489 3961-0

F. +43(0)1 489 3961-7

mail@szabo-scandic.com

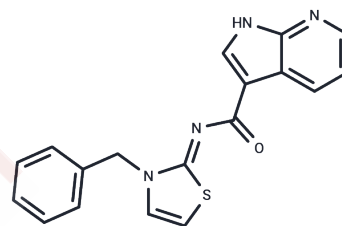
www.szabo-scandic.com

[linkedin.com/company/szaboscandic](https://www.linkedin.com/company/szaboscandic) 

Lats-IN-1

Chemical Properties

CAS No. : 1424635-83-5
 Formula: C₁₈H₁₄N₄O₅
 Molecular Weight: 334.39
 Appearance: no data available
 Storage: Powder: -20°C for 3 years | In solvent: -80°C for 1 year



Biological Description

Description	Lats-IN-1 is a potent and ATP-competitive Lats1 and Lats2 kinases inhibitor. It promotes Yap-dependent proliferation in postmitotic mammalian tissues.
Targets(IC50)	Others,YAP

Solubility Information

Solubility	DMSO: 83.33 mg/mL (249.20 mM),Sonication is recommended. (< 1 mg/ml refers to the product slightly soluble or insoluble)
------------	---

Preparing Stock Solutions

	1mg	5mg	10mg
1 mM	2.9905 mL	14.9526 mL	29.9052 mL
5 mM	0.5981 mL	2.9905 mL	5.981 mL
10 mM	0.2991 mL	1.4953 mL	2.9905 mL
50 mM	0.0598 mL	0.2991 mL	0.5981 mL

Please select the appropriate solvent to prepare the stock solution, according to the solubility of the product in different solvents. Please use it as soon as possible.

Reference

Gao Y, Han W, Dong R, et al.Efficient Reprogramming of Mouse Embryonic Stem Cells into Trophoblast Stem-like Cells via Lats Kinase Inhibition.Biology.2024, 13(2): 71.

Inhibitor · Natural Compounds · Compound Libraries · Recombinant Proteins

This product is for Research Use Only· Not for Human or Veterinary or Therapeutic Use

Tel:781-999-4286 E_mail:info@targetmol.com Address:36 Washington Street,Wellesley Hills,MA 02481