



# SZABO SCANDIC

Part of Europa Biosite

## Produktinformation



Forschungsprodukte & Biochemikalien



Zellkultur & Verbrauchsmaterial



Diagnostik & molekulare Diagnostik



Laborgeräte & Service

Weitere Information auf den folgenden Seiten!  
See the following pages for more information!



### Lieferung & Zahlungsart

siehe unsere [Liefer- und Versandbedingungen](#)

### Zuschläge

- Mindermengenzuschlag
- Trockeneiszuschlag
- Gefahrgutzuschlag
- Expressversand

### SZABO-SCANDIC HandelsgmbH

Quellenstraße 110, A-1100 Wien

T. +43(0)1 489 3961-0

F. +43(0)1 489 3961-7

[mail@szabo-scandic.com](mailto:mail@szabo-scandic.com)

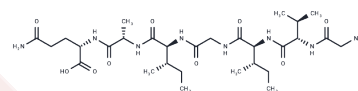
[www.szabo-scandic.com](http://www.szabo-scandic.com)

[linkedin.com/company/szaboscandic](https://www.linkedin.com/company/szaboscandic) 

## SOD1 (147-153) human

## Chemical Properties

CAS No. :	2760733-01-3
Formula:	C <sub>29</sub> H <sub>52</sub> N <sub>8</sub> O <sub>9</sub>
Molecular Weight:	656.77
Appearance:	no data available
Storage:	Powder: -20°C for 3 years   In solvent: -80°C for 1 year



## Biological Description

Description	SOD1 (147-153) human, a peptide segment within Cu/Zn superoxide dismutase (SOD1), exhibits a high propensity for forming amyloid fibrils. This segment is involved in the formation of aggregates and serves as a common molecular determinant in both familial amyotrophic lateral sclerosis (fALS) and sporadic amyotrophic lateral sclerosis (sALS).
-------------	---

## Preparing Stock Solutions

	1mg	5mg	10mg
1 mM	1.5226 mL	7.613 mL	15.226 mL
5 mM	0.3045 mL	1.5226 mL	3.0452 mL
10 mM	0.1523 mL	0.7613 mL	1.5226 mL
50 mM	0.0305 mL	0.1523 mL	0.3045 mL

Please select the appropriate solvent to prepare the stock solution, according to the solubility of the product in different solvents. Please use it as soon as possible.

**Inhibitor · Natural Compounds · Compound Libraries · Recombinant Proteins**

This product is for Research Use Only · Not for Human or Veterinary or Therapeutic Use

Tel:781-999-4286 E\_mail:info@targetmol.com Address:36 Washington Street,Wellesley Hills,MA 02481