



SZABO SCANDIC

Part of Europa Biosite

Produktinformation



Forschungsprodukte & Biochemikalien



Zellkultur & Verbrauchsmaterial



Diagnostik & molekulare Diagnostik



Laborgeräte & Service

Weitere Information auf den folgenden Seiten!
See the following pages for more information!



Lieferung & Zahlungsart

siehe unsere [Liefer- und Versandbedingungen](#)

Zuschläge

- Mindermengenzuschlag
- Trockeneiszuschlag
- Gefahrgutzuschlag
- Expressversand

SZABO-SCANDIC HandelsgmbH

Quellenstraße 110, A-1100 Wien

T. +43(0)1 489 3961-0

F. +43(0)1 489 3961-7

mail@szabo-scandic.com

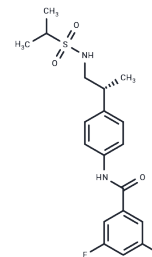
www.szabo-scandic.com

[linkedin.com/company/szaboscandic](https://www.linkedin.com/company/szaboscandic)

LY450108

Chemical Properties

CAS No. :	376594-67-1
Formula:	C ₁₉ H ₂₂ F ₂ N ₂ O ₃ S
Molecular Weight:	396.45
Appearance:	no data available
Storage:	Powder: -20°C for 3 years In solvent: -80°C for 1 year



Biological Description

Description	LY450108 is a potentiator of the AMPA receptor that can be used in Parkinson's disease studies.
Targets(IC50)	iGluR

Solubility Information

Solubility	DMSO: 50 mg/mL (126.12 mM), H ₂ O: 1 mg/mL (2.52 mM), Sonication and heating are recommended. (< 1 mg/ml refers to the product slightly soluble or insoluble)
------------	--

Preparing Stock Solutions

	1mg	5mg	10mg
1 mM	2.5224 mL	12.6119 mL	25.2239 mL
5 mM	0.5045 mL	2.5224 mL	5.0448 mL
10 mM	0.2522 mL	1.2612 mL	2.5224 mL
50 mM	0.0504 mL	0.2522 mL	0.5045 mL

Please select the appropriate solvent to prepare the stock solution, according to the solubility of the product in different solvents. Please use it as soon as possible.

Reference

Jhee SS, Chappell AS, Zarotsky V, et al. Multiple-dose plasma pharmacokinetic and safety study of LY450108 and LY451395 (AMPA receptor potentiators) and their concentration in cerebrospinal fluid in healthy human subjects. J

Inhibitor · Natural Compounds · Compound Libraries · Recombinant Proteins

This product is for Research Use Only · Not for Human or Veterinary or Therapeutic Use

Tel: 781-999-4286 E_mail: info@targetmol.com Address: 36 Washington Street, Wellesley Hills, MA 02481