



SZABO SCANDIC

Part of Europa Biosite

Produktinformation



Forschungsprodukte & Biochemikalien



Zellkultur & Verbrauchsmaterial



Diagnostik & molekulare Diagnostik



Laborgeräte & Service

Weitere Information auf den folgenden Seiten!
See the following pages for more information!



Lieferung & Zahlungsart

siehe unsere [Liefer- und Versandbedingungen](#)

Zuschläge

- Mindermengenzuschlag
- Trockeneiszuschlag
- Gefahrgutzuschlag
- Expressversand

SZABO-SCANDIC HandelsgmbH

Quellenstraße 110, A-1100 Wien

T. +43(0)1 489 3961-0

F. +43(0)1 489 3961-7

mail@szabo-scandic.com

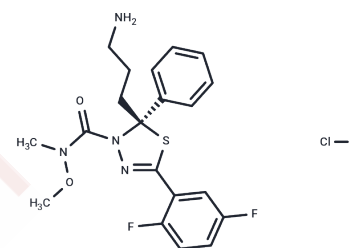
www.szabo-scandic.com

[linkedin.com/company/szaboscandic](https://www.linkedin.com/company/szaboscandic) 

ARRY 520 hydrochloride

Chemical Properties

CAS No. :	1385020-40-5
Formula:	C ₂₀ H ₂₃ ClF ₂ N ₄ O ₂ S
Molecular Weight:	456.94
Appearance:	no data available
Storage:	Powder: -20°C for 3 years In solvent: -80°C for 1 year



Biological Description

Description	ARRY 520 hydrochloride is a kinesin spindle protein (KSP) inhibitor. ARRY 520 hydrochloride induces cell death by apoptosis and has potent anti-proliferative activity.
Targets(IC50)	KSP
In vitro	ARRY 520 causes accumulation of cells in the G2/M phase of the cell cycle in a dose-dependent manner in HeLa cells[1]. ARRY 520 induces mitotic arrest in multiple cell lines and exhibits anti-proliferative against a broad range of human and rodent tumor cell lines, including a variety of leukemias and solid tumors[1]. ARRY 520 induces apoptosis in a dose-dependent manner in HeLa cells[1]. ARRY 520 potently induces cell cycle block and subsequent death in leukemic cells via the mitochondrial pathway and has potential to eradicate AML progenitor cells[2]. ARRY 520 is able to induce caspase-2 activation[3]. ARRY 520 is cytotoxic in Type II EOC cells[3].
In vivo	ARRY 520 has anti-tumor activity in vivo. ARRY 520 induced a decrease in tumor kinetics in a dose-dependent manner in female nude mice, EOC mice xenograft model[3].

Solubility Information

Solubility	DMSO: 50 mg/mL (109.42 mM) (< 1 mg/ml refers to the product slightly soluble or insoluble)
------------	---

Preparing Stock Solutions

	1mg	5mg	10mg
1 mM	2.1885 mL	10.9424 mL	21.8847 mL
5 mM	0.4377 mL	2.1885 mL	4.3769 mL
10 mM	0.2188 mL	1.0942 mL	2.1885 mL
50 mM	0.0438 mL	0.2188 mL	0.4377 mL

Please select the appropriate solvent to prepare the stock solution, according to the solubility of the product in different solvents. Please use it as soon as possible.

Reference

Christine Lemieux, et al. ARRY-520, a Novel, Highly Selective KSP Inhibitor with Potent Anti-Proliferative Activity. AACR Annual Meeting. 2007.

Inhibitor · Natural Compounds · Compound Libraries · Recombinant Proteins

This product is for Research Use Only · Not for Human or Veterinary or Therapeutic Use

Tel:781-999-4286 E_mail:info@targetmol.com Address:36 Washington Street,Wellesley Hills,MA 02481