



SZABO SCANDIC

Part of Europa Biosite

Produktinformation



Forschungsprodukte & Biochemikalien



Zellkultur & Verbrauchsmaterial



Diagnostik & molekulare Diagnostik



Laborgeräte & Service

Weitere Information auf den folgenden Seiten!
See the following pages for more information!



Lieferung & Zahlungsart

siehe unsere [Liefer- und Versandbedingungen](#)

Zuschläge

- Mindermengenzuschlag
- Trockeneiszuschlag
- Gefahrgutzuschlag
- Expressversand

SZABO-SCANDIC HandelsgmbH

Quellenstraße 110, A-1100 Wien

T. +43(0)1 489 3961-0

F. +43(0)1 489 3961-7

mail@szabo-scandic.com

www.szabo-scandic.com

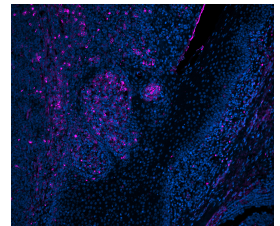
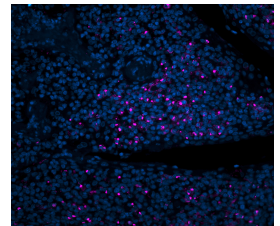
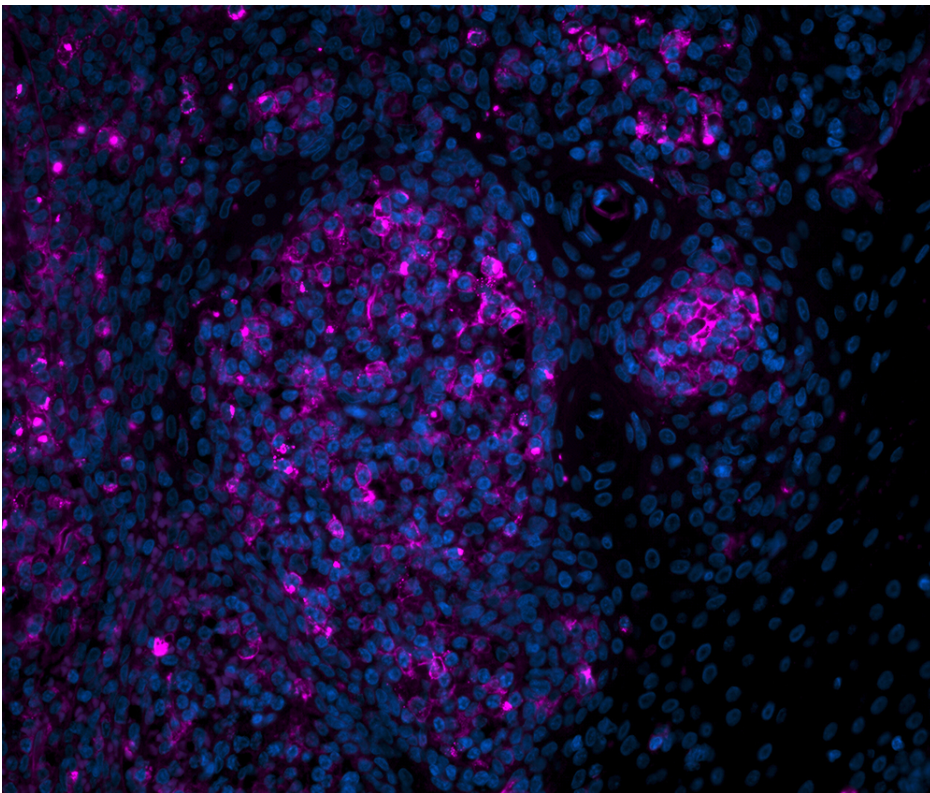
[linkedin.com/company/szaboscandic](https://www.linkedin.com/company/szaboscandic) 



Peanut Agglutinin (PNA), CY5

CL-1075-1

Product Images



Short Description

Peanut agglutinin binds preferentially to the T-antigen, a galactosyl (β -1,3) *N*-acetylgalactosamine structure present in many glycoconjugates such as M and N blood groups, gangliosides, and many other soluble and membrane-associated glycoproteins and glycolipids. With certain exceptions, the receptor sequence for PNA is normally sialylated which prevents the lectin from binding to its receptor oligosaccharide (see Jacalin). Even sialic acid which is not bound directly to the receptor sugars may inhibit binding. The presence of calcium ions in diluents can enhance the binding of PNA to receptors, possibly by neutralizing the negative charges on sialic acid residues adjacent to the receptor sequence.

Cy5 labeled Peanut agglutinin has an appropriate number of fluorochromes bound to provide the optimum staining characteristics for this lectin. This conjugate is supplied essentially free of unconjugated fluorochromes.

- Excitation: 650 nm
- Emission: 670 nm
- Color: Far Red

Additional Information

Unit Size	1 mg
Applications	Immunofluorescence, Glycobiology
Recommended Usage	The recommended concentration range for use is 5-20 μ g/ml.
Recommended Storage	2-8 °C
Maximum Excitation	650 nm
Inhibiting and/or Eluting Sugar	Inhibiting/Eluting Sugar: 200 mM galactose (S-9003).
Maximum Emission	670 nm
Solution	10 mM HEPES, 0.15 M NaCl, pH 7.5, 0.08% sodium azide, 0.1 mM CaCl ₂ , and a proprietary stabilizer.
Concentration	1 mg active conjugate/ml
Conjugate	Cy5
Color of Fluorescence	Far Red
Sugar Specificity	Galactose

