



SZABO SCANDIC

Part of Europa Biosite

Produktinformation



Forschungsprodukte & Biochemikalien



Zellkultur & Verbrauchsmaterial



Diagnostik & molekulare Diagnostik



Laborgeräte & Service

Weitere Information auf den folgenden Seiten!
See the following pages for more information!



Lieferung & Zahlungsart

siehe unsere [Liefer- und Versandbedingungen](#)

Zuschläge

- Mindermengenzuschlag
- Trockeneiszuschlag
- Gefahrgutzuschlag
- Expressversand

SZABO-SCANDIC HandelsgmbH

Quellenstraße 110, A-1100 Wien

T. +43(0)1 489 3961-0

F. +43(0)1 489 3961-7

mail@szabo-scandic.com

www.szabo-scandic.com

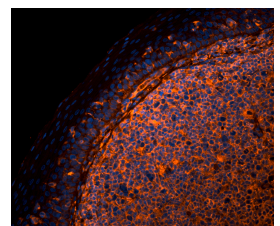
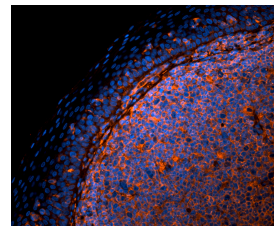
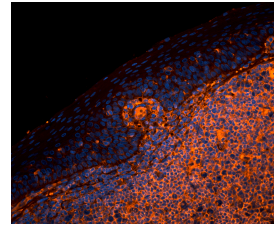
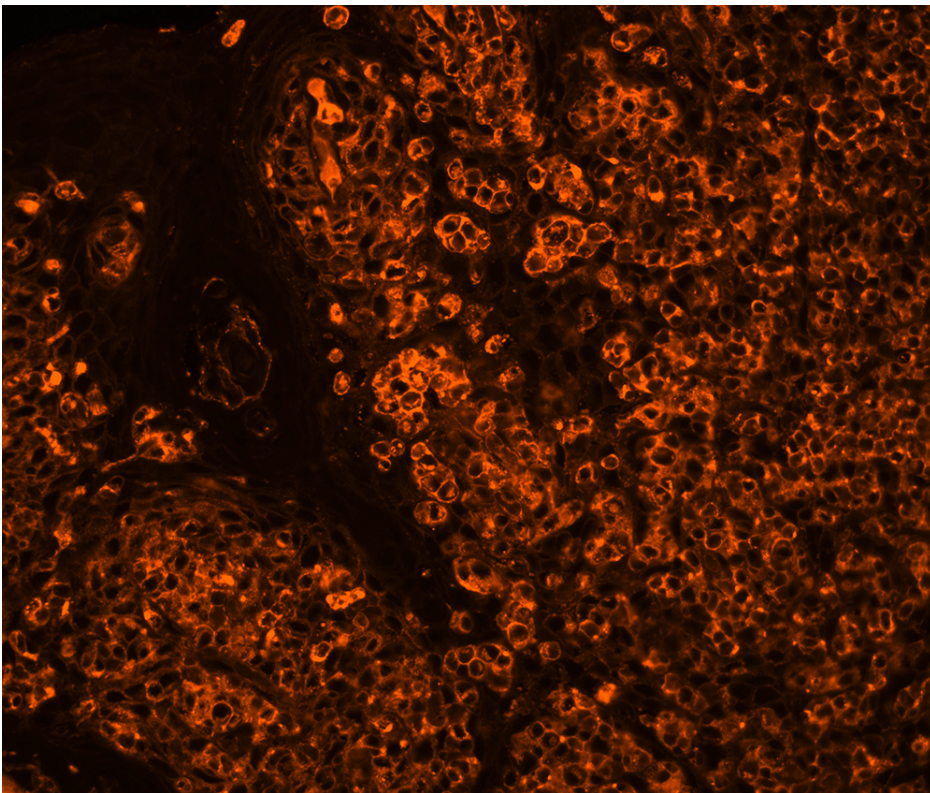
[linkedin.com/company/szaboscandic](https://www.linkedin.com/company/szaboscandic) 



Sambucus Nigra Lectin (SNA, EBL), CY3

CL-1303-1

Product Images





Short Description

Sambucus nigra lectin, isolated from elderberry bark, binds preferentially to sialic acid attached to terminal galactose in α -2,6 and to a lesser degree, α -2,3 linkage. Binding is also inhibited to some extent by lactose or galactose. This lectin appears to bind sialic acid linked to *N*-acetylgalactosamine or galactose. SNA has been reported to inhibit cell-free protein synthesis.

Cy3 labeled *Sambucus nigra* lectin has an appropriate number of fluorochromes bound to provide the optimum staining characteristics for this lectin. This conjugate is supplied essentially free of unconjugated fluorochromes.

- Excitation: 552 nm
- Emission: 565 nm
- Color: Red

Additional Information

Unit Size	1 mg
Applications	Immunofluorescence, Glycobiology
Recommended Usage	The recommended concentration range for use is 5-20 μ g/ml.
Recommended Storage	2-8 °C
Maximum Excitation	552 nm
Maximum Emission	565 nm
Solution	10 mM HEPES, 0.15 M NaCl, pH 7.5, 0.08% sodium azide, 0.1 mM CaCl ₂ , and a proprietary stabilizer.
Concentration	1 mg active conjugate/ml
Conjugate	Cy3
Color of Fluorescence	Red
Sugar Specificity	Sialic Acid

