



SZABO SCANDIC

Part of Europa Biosite

Produktinformation



Forschungsprodukte & Biochemikalien



Zellkultur & Verbrauchsmaterial



Diagnostik & molekulare Diagnostik



Laborgeräte & Service

Weitere Information auf den folgenden Seiten!
See the following pages for more information!



Lieferung & Zahlungsart

siehe unsere [Liefer- und Versandbedingungen](#)

Zuschläge

- Mindermengenzuschlag
- Trockeneiszuschlag
- Gefahrgutzuschlag
- Expressversand

SZABO-SCANDIC HandelsgmbH

Quellenstraße 110, A-1100 Wien

T. +43(0)1 489 3961-0

F. +43(0)1 489 3961-7

mail@szabo-scandic.com

www.szabo-scandic.com

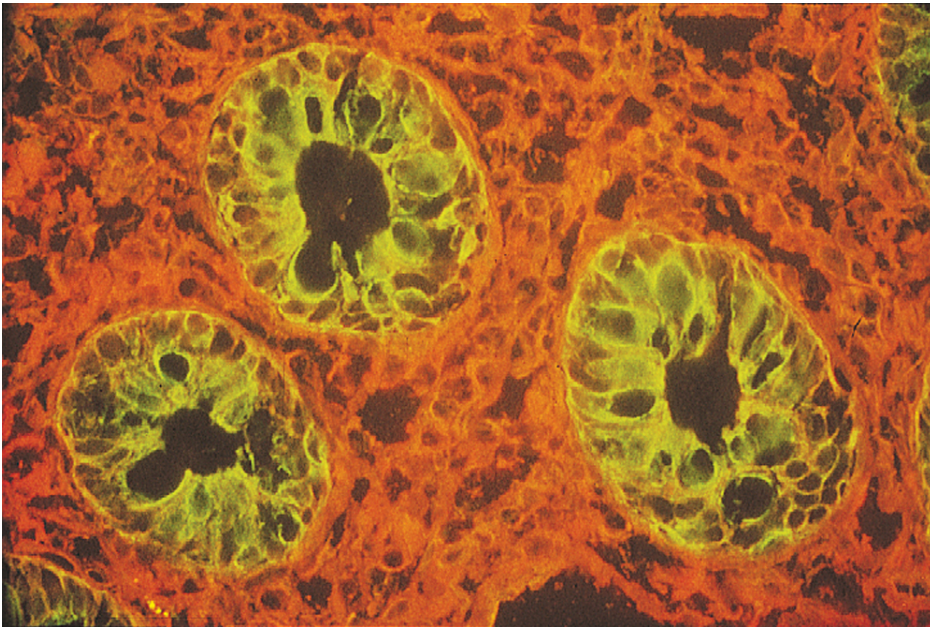
[linkedin.com/company/szaboscandic](https://www.linkedin.com/company/szaboscandic) 



Lycopersicon esculentum (Tomato) Lectin (LEL, TL), Fluorescein

FL-1171-1

Product Images



Short Description

Tomato lectin (from *Lycopersicon esculentum*) is an effective marker of blood vessels and microglial cells in rodents. Conjugation of the lectin with fluorescein facilitates fast, one-step detection and visualization using intravascular perfusion methods or direct application to tissue sections.

Additional Information

Unit Size	1 mg
Applications	Immunofluorescence, Glycobiology
Recommended Usage	The recommended concentration range for use is 5-20 µg/ml.
Recommended Storage	2-8°C
Maximum Excitation	495-500 nm
Maximum Emission	514-521 nm
Solution	10 mM HEPES, 0.15 M NaCl, pH 7.5, 0.08% sodium azide, 0.1 mM CaCl ₂ , 5mg/ml β cyclodextrin
Concentration	2 mg active conjugate/ml
Conjugate	Fluorescein
Color of Fluorescence	Green
Sugar Specificity	[GlcNAc]1-3, N-Acetylglucosamine

