



# SZABO SCANDIC

Part of Europa Biosite

## Produktinformation



Forschungsprodukte & Biochemikalien



Zellkultur & Verbrauchsmaterial



Diagnostik & molekulare Diagnostik



Laborgeräte & Service

Weitere Information auf den folgenden Seiten!  
See the following pages for more information!



### Lieferung & Zahlungsart

siehe unsere [Liefer- und Versandbedingungen](#)

### Zuschläge

- Mindermengenzuschlag
- Trockeneiszuschlag
- Gefahrgutzuschlag
- Expressversand

### SZABO-SCANDIC HandelsgmbH

Quellenstraße 110, A-1100 Wien

T. +43(0)1 489 3961-0

F. +43(0)1 489 3961-7

[mail@szabo-scandic.com](mailto:mail@szabo-scandic.com)

[www.szabo-scandic.com](http://www.szabo-scandic.com)

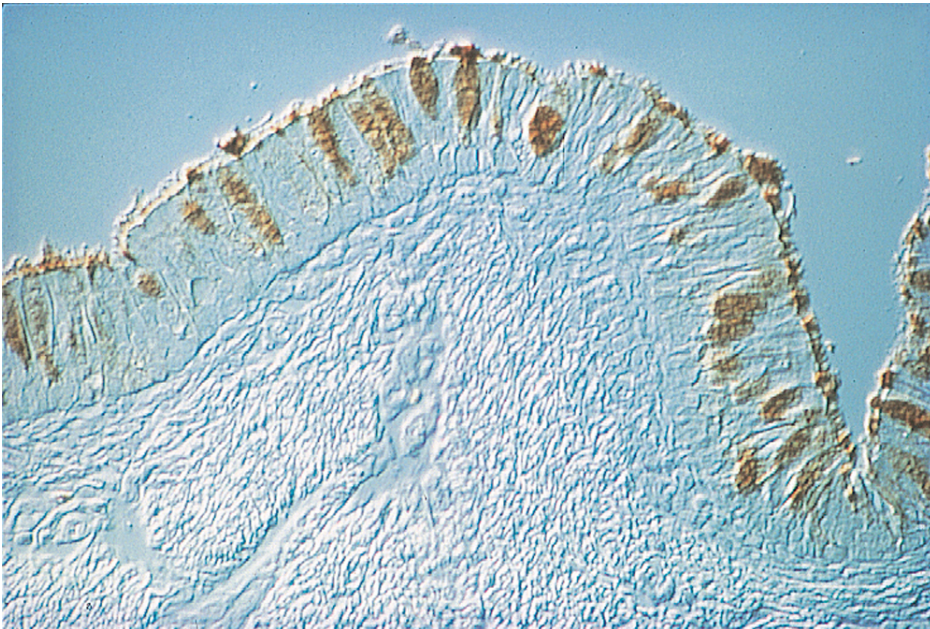
[linkedin.com/company/szaboscandic](https://www.linkedin.com/company/szaboscandic) 



# Soybean Agglutinin (SBA), Unconjugated

## L-1010

Product Images



## Short Description

---

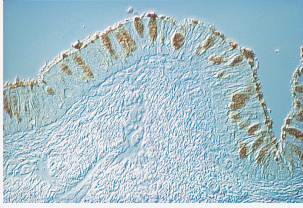
SBA preferentially binds to oligosaccharide structures with terminal  $\alpha$ - or  $\beta$ -linked *N*-acetylgalactosamine, and to a lesser extent, galactose residues. Binding can be blocked by substitutions on penultimate sugars, such as fucose attached to the penultimate galactose in blood group B substance.

## Additional Information

---

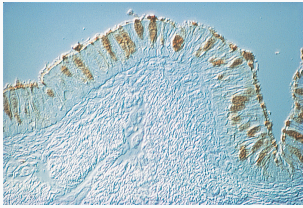
Unit Size	10 mg, 25 mg
Applications	Immunohistochemistry / Immunocytochemistry, Immunofluorescence, Blotting Applications, Glycobiology, Mitogenic Stimulation
Recommended Usage	Although many buffers can be employed for reconstituting and diluting this lectin, we recommend 10 mM HEPES buffered saline, pH 8.5, 0.1 mM CaCl <sub>2</sub> . For preserving solutions stored at 4 °C, 0.08% sodium azide can be used.
Recommended Storage	2-8 °C
Conjugate	Unconjugated
Sugar Specificity	Galactose, N-Acetylgalactosamine

## Products in this set



### Soybean Agglutinin (SBA), Unconjugated

SBA preferentially binds to oligosaccharide structures with terminal  $\alpha$ - or  $\beta$ -linked *N*-acetylgalactosamine, and to a lesser extent, galactose residues. Binding can be blocked by substitutions on penultimate sugars, such as fucose attached to the penultimate galactose in blood group B substance.



### Soybean Agglutinin (SBA), Unconjugated

SBA preferentially binds to oligosaccharide structures with terminal  $\alpha$ - or  $\beta$ -linked *N*-acetylgalactosamine, and to a lesser extent, galactose residues. Binding can be blocked by substitutions on penultimate sugars, such as fucose attached to the penultimate galactose in blood group B substance.

