



SZABO SCANDIC

Part of Europa Biosite

Produktinformation



Forschungsprodukte & Biochemikalien



Zellkultur & Verbrauchsmaterial



Diagnostik & molekulare Diagnostik



Laborgeräte & Service

Weitere Information auf den folgenden Seiten!
See the following pages for more information!



Lieferung & Zahlungsart

siehe unsere [Liefer- und Versandbedingungen](#)

Zuschläge

- Mindermengenzuschlag
- Trockeneiszuschlag
- Gefahrgutzuschlag
- Expressversand

SZABO-SCANDIC HandelsgmbH

Quellenstraße 110, A-1100 Wien

T. +43(0)1 489 3961-0

F. +43(0)1 489 3961-7

mail@szabo-scandic.com

www.szabo-scandic.com

[linkedin.com/company/szaboscandic](https://www.linkedin.com/company/szaboscandic) 



ZYMO RESEARCH



Zymo-Seq™ Cell Free DNA WGBS Library Kit

High quality libraries from precious cfDNA samples

Highlights

- **Optimized for small fragment input:** Ideal for small and damaged DNA fragments such as cell-free DNA (cfDNA).
- **Accurate methylation calling:** Direct ligation-based protocol allows for accurate reads and methylation calling of native termini for each DNA fragment.
- **Streamlined and simple workflow:** Prepare robust methyl-seq libraries in as little as 3 steps.

Catalog Numbers:
D5462, D5463



Scan with your smart-phone camera to
view the online protocol/video.



tech@zymoresearch.com



www.zymoresearch.com



Toll Free: (888) 882-9682

Table of Contents

Product Contents	01
Specifications	02
Product Description	03
Protocol	05
Buffer Preparation.....	05
Before Starting.....	06
Section 1: Bisulfite Conversion	07
Section 2: Adapter Ligation	09
Section 3: Index PCR Amplification.....	11
Appendices	13
A: Select-a-Size MagBead Clean-Up Protocol	13
B: Library Quantification and Characterization	15
C: <i>In Situ</i> Bisulfite Conversion Controls	16
D: Unique Dual Index Primer Sets	17
E: Considerations for Sequencing and Data Analysis	18
Ordering Information	19
Complete Your Workflow	20
Notes	21
Guarantee	25

Product Contents

Zymo-Seq™ Cell Free DNA WGBS Library Kit	D5462 (24 prep)	D5463 (96 prep)	Storage Temperature
Lightning Conversion Reagent ¹	3 x 1.5 mL	15 mL	Room Temp.
M-Binding Buffer	20 mL	80 mL	Room Temp.
M-Wash Buffer (concentrate) ²	6 mL	24 mL	Room Temp.
L-Desulphonation Buffer	10 mL	40 mL	Room Temp.
DNA Elution Buffer	4 mL	16 mL	Room Temp.
Zymo-Spin™ IC Columns	25	2 x 50	Room Temp.
Collection Tubes	25	2 x 50	Room Temp.
DNA Wash Buffer (concentrate) ³	6 mL	24 mL	Room Temp.
Select-a-Size MagBead Concentrate	300 µL	2 x 300 µL	4°C
Select-a-Size MagBead Buffer	10 mL	2 x 10 mL	4°C
<i>E. coli</i> Non-Methylated Genomic DNA	5 µg/20 µL	5 µg/20 µL	-20°C
Adapter Ligation Buffer 1	48 µL	2 x 96 µL	-20°C
Adapter Ligation Buffer 2 ⁴	48 µL	2 x 96 µL	-20°C
Adapter Ligation Buffer 3 ⁵	48 µL	2 x 96 µL	-20°C
Adapter Ligation Master Mix ⁶	625 µL	2 x 1.25 mL	-20°C
2X Index PCR Premix	600 µL	2 x 1.2 mL	-20°C
Zymo-Seq™ UDI Primer Set (1-12) ⁷	20 µL/Index	-	-20°C
Zymo-Seq™ UDI Primer Plate (1-96) ⁸	-	10 µL/Index	-20°C
Instruction Manual	1	1	-

¹ The **Lightning Conversion Reagent** is in a ready-to-use format. The reagent should be stored tightly capped at room temperature with minimum exposure to light.

^{2,3} The **M-Wash Buffer** and **DNA Wash Buffer** are supplied as concentrates. See **Buffer Preparation** on pg. 5 for directed amounts of ethanol to be added to each upon first use. Cap bottle tightly after each use to prevent ethanol evaporation.

^{4,5,6} The **Adapter Ligation Buffer 2**, **Adapter Ligation Buffer 3**, and **Adapter Ligation Master Mix** reagents are sensitive and should undergo no more than 4 freeze-thaw cycles. Make additional aliquots of each buffer as necessary.

^{7,8} The provided **Zymo-Seq™ UDI Primer Set** (Indexes 1-12) (D3008) or **Zymo-Seq™ UDI Primer Plate** (Indexes 1-96) (D3096) contains 12 pre-mixed unique dual-index barcode primers in 1.5 mL tubes or 96 pre-mixed unique dual-index barcode primers in a 96-well plate format respectively. See **Appendix D** for primer specifications, index sequences, and multiplexing considerations.

Specifications

- **Sample Input Material:** Purified cell-free DNA (cfDNA)
- **Minimum Input:** 5 ng
- **Maximum Input:** 10 ng
- **Input Quality:** For optimal results, use at least minimum input of purified cfDNA with no RNA or genomic DNA contamination. cfDNA can be concentrated using the **DNA Clean & Concentrator™** (D4013) prior to processing. cfDNA can be suspended in water, DNA Elution Buffer, or TE buffer.
- **Equipment Required:** Thermal cycler(s) with temperature adjustable lids, microcentrifuge, magnetic stand.
- **Total Processing Time:** ~6 hours
- **Hands-On Time:** ~2 hours
- **Bisulfite Conversion Efficiency:** >99.5% of non-methylated cytosine residues are converted to uracil; >99.5% protection of methylated cytosines.
- **Library Storage:** Libraries eluted in **DNA Elution Buffer** (provided) may be stored at $\leq 4^{\circ}\text{C}$ overnight or $\leq -20^{\circ}\text{C}$ for long-term storage.
- **Sequencing Platform Compatibility:** Libraries are compatible with all Illumina sequencing platforms. Recommended: NextSeq®, NovaSeq®.
- **Barcode Sequences:** Available for download [here](#) (USA only), or by visiting the Documents section of the D3008 and D3096 product pages at www.zymoresearch.com.

Product Description

The **Zymo-Seq™ Cell Free DNA WGBS Library Kit** provides an optimized and reliable workflow for the preparation of methyl-seq libraries from cell-free DNA (cfDNA). The process is completed in three basic steps: (1) bisulfite conversion using **EZ DNA Methylation-Lightning™** chemistry, (2) direct adapter ligation with innovative splinted adapters, and (3) index PCR amplification. This streamlined workflow has been optimized for use with short, damaged DNA fragments, making whole genome bisulfite sequencing (WGBS) library preparation with cfDNA an efficient process that can be completed in as little as 6 hours.

The **EZ DNA Methylation-Lightning™** bisulfite conversion is gentle on already short or damaged DNA fragments, resulting in less degradation of the sample compared to other bisulfite conversion chemistries and methods. The bisulfite conversion is completed rapidly while maintaining the integrity of cfDNA.

After bisulfite conversion, DNA remains in a single-stranded conformation, proving more difficult for conventional library preparation methods. This obstacle is circumvented by utilizing unique splinted adapter ligation technology to capture and directly ligate the Illumina-compatible adapters to each end of the bisulfite converted cfDNA rather than performing more laborious second strand synthesis, end repair, and dA tailing steps. These processes incorporate artificial nucleotides to blunt damaged ends or miss them altogether. The direct adapter ligation eliminates this bias by accurately preserving the methylation status of each fragment terminus. This results in faster library preparation as well as more precise methylation calling across the entire DNA fragment.

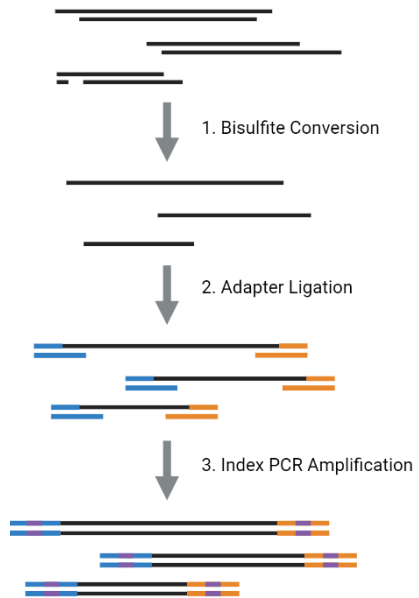


Figure 1. Overview of the Zymo-Seq™ Cell Free DNA WGBS Library Kit protocol. The simple three-step protocol allows users to effortlessly prepare WGBS libraries from cfDNA with no compromise on quality.

The splinted adapter ligation technology is also capable of thoroughly capturing small DNA fragments, allowing for library construction from nicked and very short DNA fragments that would otherwise not be viable when using other methods. Libraries can be prepared from a much greater percentage of cfDNA input rather than only the DNA fragments that are of convenient size for traditional library preparation.

Once the adapters have been ligated to the cfDNA, the final step is the amplification and indexing via PCR. The **Zymo-Seq™ UDI Primers** facilitate effortless multiplexing of numerous libraries. After a final clean-up, the cfDNA WGBS libraries are ready for sequencing on any Illumina instrument.

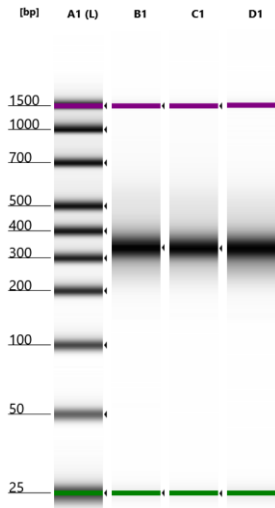


Figure 2. Zymo-Seq™ Cell Free DNA WGBS Libraries prepared from multiple cfDNA samples. Agilent 4200 TapeStation® HS D1000 of libraries prepared using cfDNA extracted from both healthy and cancerous plasma donors¹. **A1** is a molecular weight marker. **B1** is a library prepared with cfDNA from a 59-year-old healthy plasma donor. **C1** is a library prepared with cfDNA from a 66-year-old lung cancer NSCLC stage IV plasma donor. **D1** is a library prepared with cfDNA from a 69-year-old lung cancer adenocarcinoma stage IV plasma donor. All libraries were prepared using 5 ng purified cfDNA and amplified at 9 index PCR cycles.

¹ cfDNA samples were extracted from 5 mL plasma using the **Quick-cfDNA™ Serum & Plasma Kit** (D4076) and concentrated using the **DNA Clean & Concentrator-5™** (D4013).

Protocol

Buffer Preparation

- ✓ Preparation of the **M-Wash Buffer** concentrate:

1. Add the following volumes of ethanol to the **M-Wash Buffer** concentrate:

M-Wash Buffer	If Using 100% Ethanol	If Using 95% Ethanol
6 mL M-Wash Buffer (D5001-4)	Add 24 mL	Add 26 mL
24 mL M-Wash Buffer (D5002-4)	Add 96 mL	Add 104 mL

2. Initial and mark date of ethanol addition to the bottle.

- ✓ Preparation of the **DNA Wash Buffer** concentrate:

1. Add the following volumes of ethanol to the **DNA Wash Buffer** concentrate:

DNA Wash Buffer	If Using 100% Ethanol	If Using 95% Ethanol
6 mL DNA Wash Buffer (D4003-2-6)	Add 24 mL	Add 26 mL
24 mL DNA Wash Buffer (D4003-2-24)	Add 96 mL	Add 104 mL

2. Initial and mark date of ethanol addition to the bottle.

- ✓ Preparation of the **Select-a-Size MagBeads**:

1. Add 300 μ L of **Select-a-Size MagBead Concentrate** to each 10 mL **Select-a-Size MagBead Buffer**.
2. Resuspend by pipetting up and down and vortexing. Store at 4°C–8°C.
3. Sample and bead volumes are optimized for **Select-a-Size MagBead** based clean-ups. Recommended volumes in each section will minimize pipetting error

Before Starting:

- ✓ Refer to **Appendix C: *In Situ* Bisulfite Conversion Controls** for considerations regarding the provided ***E. coli* Non-Methylated Genomic DNA** in library preparation and analysis.
- ✓ Components that are stored at -20°C should be thawed and kept on ice unless otherwise stated. Return to -20°C storage after use.
- ✓ Mix each component well before use by pipetting up and down, flicking, inverting, or gently vortexing. Centrifuge briefly to collect all contents potentially caught on the sides or caps of the tubes before using.
- ✓ Avoid multiple freeze-thaws of the **Zymo-Seq™ UDI Primers**. Make additional aliquots as necessary.
- ✓ The **Adapter Ligation Buffer 2**, **Adapter Ligation Buffer 3**, and **Adapter Ligation Master Mix** are very sensitive to freeze-thaw and should only be thawed 4 times maximum. During the first thaw make additional aliquots as necessary to maintain library quality.
- ✓ Before using the **Select-a-Size MagBeads**, allow them to equilibrate to room temperature for 30 minutes.

Section 1: Bisulfite Conversion

Before Starting:

- ✓ Ensure that the indicated volume of ethanol has been added to the **M-Wash Buffer** (see pg. 5 **Buffer Preparation**).

1. Mix the following components in a 0.2 mL PCR tube¹:

Component	Volume
Input cfDNA (5 ng – 10 ng)	X μ L
<i>E. coli</i> Non-Methylated Genomic DNA (optional) ²	Y μ L
DNase/RNase-Free Water	Up to 20 μ L
Total Volume	20 μL

2. Add 130 μ L of **Lightning Conversion Reagent** to each sample and mix well by pipetting.
3. Centrifuge briefly to ensure there are no droplets in the cap or on the sides of the tube. Place the 0.2 mL PCR tube(s) in a thermal cycler (lid temp 105°C) and perform the following steps:

Temperature	Time
98°C	8 minutes
54°C	60 minutes
4°C	\leq 20 hours (optional)

4. Place a **Zymo-Spin™ IC Column** into a provided **Collection Tube** and add 600 μ L of **M-Binding Buffer**.
5. Load the sample (from Step 3) into the **Zymo-Spin™ IC Column** containing the **M-Binding Buffer**. Close the cap and mix by inverting the column several times.

¹ cfDNA inputs >20 μ L must be processed using multiple conversion reactions. Replicate reactions can be cleaned using the same column for each by repeating Steps 4-6 up to 5 times.

² Using the ***E. coli* Non-Methylated Genomic DNA** (D5016) as a spike-in is highly recommended for determining bisulfite conversion efficiency. If using directly from the tube, the *E. coli* DNA can be spiked in at 2-5% wt of the input cfDNA (e.g., 100-250 pg into 5 ng of cfDNA). If fragmented to 200-300 bp, the *E. coli* DNA can be spiked in at 0.5-1% wt of the input cfDNA (e.g., 25-50 pg into 5 ng of cfDNA). See **Appendix C** for additional information.

6. Centrifuge at full speed ($\geq 10,000 \times g$) for 30 seconds. Discard the flow-through¹.
7. Add 100 μL of **M-Wash Buffer** to the column. Centrifuge at full speed ($\geq 10,000 \times g$) for 30 seconds.
8. Add 200 μL of **L-Desulphonation Buffer** to the column and let stand at room temperature (20-30°C) for 15-20 minutes². After the incubation, centrifuge at full speed ($\geq 10,000 \times g$) for 30 seconds. Discard the flow-through.
9. Add 200 μL of **M-Wash Buffer** to the column. Centrifuge at full speed ($\geq 10,000 \times g$) for 30 seconds. Repeat this wash step for two washes total.
10. Place the column into a 1.5 mL microcentrifuge tube and add 19 μL ³ of **DNA Elution Buffer** directly to the column matrix. Let incubate for 1-5 minutes⁴, and then centrifuge at full speed ($\geq 10,000 \times g$) for 30 seconds to elute the cfDNA.

This is a safe stopping point. Bisulfite-converted cfDNA can be safely stored at $\leq -20^\circ\text{C}$ for up to one month.

¹ The capacity of the **Collection Tube** with the column inserted is 800 μL . Empty the **Collection Tube** as necessary to prevent contamination of the column matrix by the flow-through.

² Incubation with **L-Desulphonation Buffer** for longer than 20 minutes may result in degradation and lower yield of converted DNA.

³ Sequential elutions of smaller volumes $\geq 6 \mu\text{L}$ (e.g., 9.5 $\mu\text{L} \times 2$ for 19 μL total) can help ensure complete elution of all DNA from the column.

⁴ Longer incubations of the **DNA Elution Buffer** on the column for up to 5 minutes can ensure greater elution efficiency.

Section 2: Adapter Ligation

Before Starting:

- ✓ Thaw the **Adapter Ligation Buffer 1**, **Adapter Ligation Buffer 2**, and **Adapter Ligation Buffer 3** on ice.
- ✓ Thaw the **Adapter Ligation Master Mix** to room temperature. Once thawed, vortex for at least 30 seconds and invert to mix well.
- ✓ The **Adapter Ligation Buffer 2**, **Adapter Ligation Buffer 3**, and **Adapter Ligation Master Mix** should only be thawed 4 times maximum. Make additional aliquots as necessary upon first thaw.

1. Preheat a thermal cycler to 98°C (lid temp 105°C) and another thermal cycler to 37°C (lid temp 45°C).

Note: If only a single thermal cycler is available, set to 98°C (lid temp 105°C) initially and change the temperature to 37°C (lid temp 45°C) during the 2-minute return to ice incubation (Step 6). Leave the lid open to help cool.

2. Combine the following on ice in a 0.2 mL PCR tube:

Component	Volume
Bisulfite-converted cfDNA	18 µL
Adapter Ligation Buffer 1	2 µL
Total Volume	20 µL

3. Mix entire reaction thoroughly by pipetting or gently vortexing then centrifuge briefly to ensure there are no droplets in the cap or on the sides of the tube.
4. Incubate the tube on ice for 2 minutes.
5. Heat shock by immediately placing the tube at 98°C (lid temp 105°C) for 3 minutes.
6. Immediately return the tube to ice and incubate for at least 2 minutes to fully denature the cfDNA¹.
7. Thoroughly mix the **Adapter Ligation Master Mix** tube by vortexing for at least 30 seconds and inverting several times².

¹ If using only one thermal cycler, set the temperature to 37°C (lid temp 45°C) during this incubation so that the temperature is ready by Step 10. Leave the lid open to help cool it faster.

² The **Adapter Ligation Master Mix** is very viscous. Mix well after thawing and right before use.

8. Add the following on ice in the order defined below to the tube:

Component	Volume
Denatured cfDNA	20 μ L
Adapter Ligation Buffer 2	2 μ L
Adapter Ligation Buffer 3	2 μ L
Adapter Ligation Master Mix	26 μ L
Total Volume	50 μL

9. Mix entire reaction thoroughly by pipetting up and down 20-25 times, vortexing, and inverting to ensure complete homogenization¹. Centrifuge very briefly to ensure there are no droplets in the cap or on the sides of the tube.
10. Incubate the tube at 37°C (lid temp 45°C)² for 1 hour in a thermal cycler.
11. After the 1-hour adapter ligation reaction, add 60 μ L of **DNA Elution Buffer** to the sample to bring the volume up to 110 μ L and mix well by pipetting.
12. Follow the clean-up protocol in **Appendix A** on pg. 13 using 60 μ L of **Select-a-Size MagBeads**. Allow the **Select-a-Size MagBeads** to equilibrate to room temperature for 30 minutes prior to use. For elution, resuspend the beads in 15 μ L of **DNA Elution Buffer** and aspirate all 15 μ L eluate after separation from the beads into a new tube.

This is a safe stopping point. The purified adapter-ligated cfDNA can be safely stored at $\leq -20^{\circ}\text{C}$ for up to one month.

¹ After addition of the **Adapter Ligation Master Mix**, the reaction will become very viscous. It is possible to mix by pipetting up and down, although additional vortexing and inversion is recommended for complete homogenization.

² If using only one thermal cycler, ensure that the temperature has reached 37°C (lid temp 45°C) before starting the incubation. If it is still cooling down, leave the samples on ice until the thermal cycler is ready.

Section 3: Index PCR Amplification

Before Starting:

✓ If utilizing the **Zymo-Seq™ UDI Primer Plate**, wait for the wells to thaw completely before use. Spin down in a plate centrifuge. Pierce the foil with a 10 µL pipette tip, then throw away the tip and use a clean pipette tip to aspirate the primers.

1. Combine the following on ice to a 0.2 mL PCR tube containing the purified adapter-ligated cfDNA¹:

Component	Volume
Adapter-Ligated cfDNA	15 µL
Zymo-Seq™ UDI Index Primers	10 µL
2X Index PCR Premix	25 µL
Total Volume	50 µL

2. Mix entire reaction thoroughly by pipetting or gently vortexing then briefly centrifuge.
3. Perform the following steps in a thermal cycler (lid temp 105°C):

Step	Temperature	Time	Recommended Number of Cycles
1	98°C	3 minutes	
2	98°C	20 seconds	10 ng cfDNA = 8-9 cycles 5 ng cfDNA = 9-10 cycles
3	65°C	30 seconds	
4	72°C	30 seconds	
Repeat Steps 2-4 for X cycles			
5	72°C	1 minute	
6	4°C	Hold	

This is a safe stopping point. Amplified cfDNA samples can be safely stored overnight at 4°C. Otherwise, continue directly to Step 4 on the next page.

¹ See **Appendix D** for **Zymo-Seq™ UDI Primer** information and multiplexing guidelines.

4. Follow the clean-up protocol in **Appendix A** on pg. 13 using 50 μL of **Select-a-Size MagBeads**. Allow the **Select-a-Size MagBeads** to equilibrate to room temperature for 30 minutes prior to use. For elution, resuspend the beads in 20 μL of **DNA Elution Buffer** and aspirate all 20 μL eluate after separation from the beads.

The eluate is the final library. Libraries can be safely stored for months at $\leq -20^{\circ}\text{C}$

Appendices

Appendix A: Select-a-Size MagBead Clean-Up Protocol

Before Starting:

- ✓ Ensure that the indicated volume of ethanol has been added to the **DNA Wash Buffer** (see pg. 5 **Buffer Preparation**).
- ✓ Ensure the **Select-a-Size MagBeads** have been properly prepared before use (see pg. 5 **Buffer Preparation**).
- ✓ Allow the **Select-a-Size MagBeads** to equilibrate to room temperature for 30 minutes prior to use.
- ✓ Resuspend the magnetic particles immediately before use by inverting and/or vortexing the **Select-a-Size MagBeads** until homogenous.

1. Add the indicated volume of **Select-a-Size MagBeads** to the tube. Mix thoroughly by pipetting until homogenous and incubate for 5–10 minutes at room temperature.
 - a. If performing clean-up in **Section 2: Adapter Ligation**, add 60 μL of **Select-a-Size MagBeads**.
 - b. If performing clean-up in **Section 3: Index PCR Amplification**, add 50 μL of **Select-a-Size MagBeads**.
2. Place the tube on a magnetic stand for 3 minutes, or until the supernatant is clear.
3. Carefully remove the supernatant without disturbing the magnetized bead pellet¹.
4. Without removing from the magnetic stand, add 200 μL of **DNA Wash Buffer** to the tube, incubate for at least 30 seconds, and then remove the supernatant completely without disturbing the magnetized bead pellet. Repeat this wash step for two washes total.
5. Remove the tube from the magnetic stand and centrifuge very briefly. Then return the tube to the magnetic stand, wait for the beads to pellet, and remove any residual **DNA Wash Buffer** with a 10 μL pipette tip.

¹ Avoid aspirating any beads when removing the supernatant.

6. Leave the tube on the magnetic stand and keep the cap open for 2–3 minutes to allow the beads to air dry^{1,2}.
7. Cap and remove the tube from the magnetic stand. Add the indicated volume of **DNA Elution Buffer** and fully resuspend the beads by pipetting up and down³. Incubate for 5 minutes at room temperature.
 - a. If performing clean-up in **Section 2: Adapter Ligation**, add 15 μL of **DNA Elution Buffer** to fully resuspend the beads.
 - b. If performing clean-up in **Section 3: Index PCR Amplification**, add 20 μL of **DNA Elution Buffer** to fully resuspend the beads.
8. Place the tube back on the magnetic stand for 2 minutes or until the supernatant is clear.
9. Transfer the indicated volume of eluate to a new tube. Discard the beads.
 - a. If performing clean-up in **Section 2: Adapter Ligation**, aspirate all 15 μL eluate and transfer to a 0.2 mL PCR tube.
 - b. If performing clean-up in **Section 3: Index PCR Amplification**, aspirate all 20 μL eluate and transfer to a new 1.5 mL microcentrifuge tube.

This is a safe stopping point. If moving on to Section 3: Index PCR Amplification, the purified adapter-ligated cfDNA can be safely stored at $\leq -20^{\circ}\text{C}$ for up to a month. If this is the final clean-up, cfDNA libraries can be safely stored at $\leq -20^{\circ}\text{C}$ for months.

¹ Do not over dry the beads as this may negatively impact recovery. Beads should remain a matte brown color without cracking.

² When performing the clean-up in **Section 2: Adapter Ligation**, the beads are more likely to disperse around the tube and are more susceptible to drying faster than normal.

³ When performing the clean-up in **Section 2: Adapter Ligation**, the resuspended beads behave differently and will be more challenging to remove from the sides of the tube. Briefly centrifuge tubes if necessary. Take care to ensure the beads are still fully resuspended.

Appendix B: Library Quantification and Characterization

Libraries can be quantified using a preferred method (i.e., NanoDrop®, Qubit®, TapeStation®, etc.). However, quantitative PCR is the recommended method for accurately determining library concentration prior to loading on to the Illumina sequencers.

Libraries should be visualized by using an automated electrophoresis instrument (i.e., Agilent TapeStation®, Agilent Bioanalyzer®, etc.) to determine that the correct library size is present. We recommend running on High Sensitivity tapes/chips for optimal library characterization. If adapter dimers are present, they will form an approximately 130-180 bp band. Yields will vary depending on the total quantity and quality of sample input cfDNA.

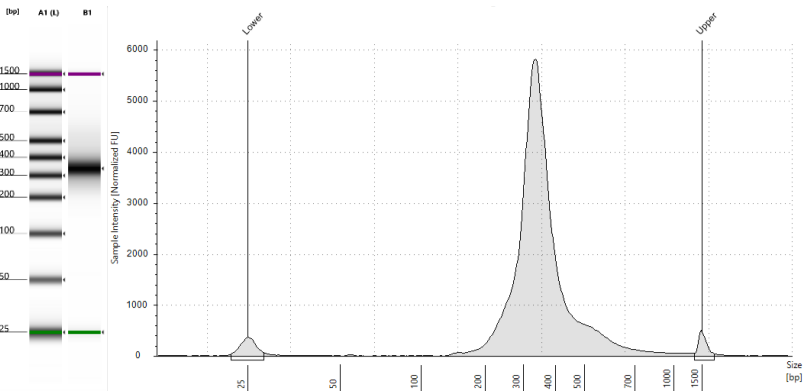


Figure 3. Characterization of a typical Zymo-Seq™ Cell Free DNA WGBS library. Agilent 4200 TapeStation® HS D1000 gel (left) and electropherogram (right) of a library prepared with the Zymo-Seq™ Cell Free DNA WGBS Library Kit from 5 ng healthy male donor cfDNA and indexed using 9 PCR cycles. The kit typically produces libraries with two to three visible peaks. These will correspond to an adapter dimer peak at approximately 130-180 bp which may not be present, a mono-nucleosome peak at approximately 290-350 bp, and a di-nucleosome peak at approximately 480-550 bp. **A1** is a molecular weight marker and **B1** is the final cfDNA WGBS library.

Appendix C: *In Situ* Bisulfite Conversion Controls

The provided ***E. coli* Non-Methylated Genomic DNA** (D5016) can be used *in situ* to determine the bisulfite conversion efficiency. The *E. coli* DNA can be spiked in at different percentages of input cfDNA depending on if it is intact or not. Due to the splinted adapters, the likelihood of each adapter being ligated to either end of a DNA fragment is inversely correlated to fragment size (i.e., the smaller the DNA fragment, the more likely both adapters are to ligate; the larger the DNA fragment, the less likely both adapters are to ligate).

The *E. coli* DNA can be used as-is, however prior fragmentation of the DNA will allow for better coverage. Therefore, we recommend the following amounts of spike-in *E. coli* DNA depending on the situation:

- **Intact *E. coli* DNA:** The *E. coli* DNA comes as ready-to-use intact genomic DNA at high molecular weight. Bisulfite conversion will fragment the DNA somewhat; however, it will still be much larger than the cfDNA input without additional fragmentation. To use directly, spike in at 2-5% wt of input cfDNA (e.g., spiking in 100-250 pg of intact *E. coli* genomic DNA into 5 ng of cfDNA sample). The amount can be adjusted to allow for more coverage.
- **Fragmented *E. coli* DNA (200-300 bp):** For better coverage, the *E. coli* DNA can be fragmented to approximately 200-300 bp in average size prior to use. When fragmented to a smaller size, the spike in amount can be reduced to 0.5-1% wt of input cfDNA (e.g., spiking in 25-50 pg of fragmented *E. coli* genomic DNA into 5 ng of cfDNA sample). The amount can be adjusted to allow for more coverage. Fragmenting the *E. coli* DNA beforehand is recommended and will allow for better coverage, although it is not required for accurate bisulfite conversion efficiency determination.

The bisulfite conversion efficiency can be determined by the percentage of unmethylated cytosines in the aligned *E. coli* reads. The reference genome of *E. coli* strain K-12 substrain MG1655 can be used for alignment and analysis. It can be accessed at the following web address:

https://www.ncbi.nlm.nih.gov/genome/167?genome_assembly_id=161521

Appendix D: Unique Dual Index Primer Sets

Indexes in the **Zymo-Seq™ UDI Primer Set (Indexes 1-12)** are dispensed in 1.5 mL tubes (D3008), and the **Zymo-Seq™ UDI Primer Plate (Indexes 1-96)** are dispensed in a single-use foil-sealed 96-well plates (D3096). Indexes come as pre-mixes, and the forward and reverse primers are provided at 5 µM total concentration (2.5 µM each).

The complete index sample sheet is available for download [here](#) (USA only), or by visiting the Documents section of the D3008 and D3096 product pages at www.zymoresearch.com.

Primer Sequences:

Forward Primer Sequence (i5):

5'-AATGATACGGCGACCACCGAGATCTACACNNNNNNNNACACTC
TTTCCTACACGACGCTCTTCCGATCT-3'

Reverse Primer Sequence (i7):

5'-CAAGCAGAAGACGGCATAACGAGATNNNNNNNNGTGACTGGAG
TTCAGACGTGTGCTCTTCCGATCT-3'

UDI Primer Plate (D3096) Setup:

To use UDI primers, pool ≥ 2 libraries in numerical order (down a column not across a row).

	1	2	3	4	5	6	7	8	9	10	11	12
A	UDI_01	UDI_09	UDI_17	UDI_25	UDI_33	UDI_41	UDI_49	UDI_57	UDI_65	UDI_73	UDI_81	UDI_89
B	UDI_02	UDI_10	UDI_18	UDI_26	UDI_34	UDI_42	UDI_50	UDI_58	UDI_66	UDI_74	UDI_82	UDI_90
C	UDI_03	UDI_11	UDI_19	UDI_27	UDI_35	UDI_43	UDI_51	UDI_59	UDI_67	UDI_75	UDI_83	UDI_91
D	UDI_04	UDI_12	UDI_20	UDI_28	UDI_36	UDI_44	UDI_52	UDI_60	UDI_68	UDI_76	UDI_84	UDI_92
E	UDI_05	UDI_13	UDI_21	UDI_29	UDI_37	UDI_45	UDI_53	UDI_61	UDI_69	UDI_77	UDI_85	UDI_93
F	UDI_06	UDI_14	UDI_22	UDI_30	UDI_38	UDI_46	UDI_54	UDI_62	UDI_70	UDI_78	UDI_86	UDI_94
G	UDI_07	UDI_15	UDI_23	UDI_31	UDI_39	UDI_47	UDI_55	UDI_63	UDI_71	UDI_79	UDI_87	UDI_95
H	UDI_08	UDI_16	UDI_24	UDI_32	UDI_40	UDI_48	UDI_56	UDI_64	UDI_72	UDI_80	UDI_88	UDI_96

Appendix E: Considerations for Sequencing and Data Analysis

Preparation for Clustering:

Accurate determination of the final library concentration is critical to achieve optimal clustering and sequencing results. For this, we recommend using quantitative PCR (e.g., KAPA[®] Library Quantification Kit).

Bisulfite conversion reduces the complexity of the library's nucleotide content. Complexity can be increased by loading PhiX or multiplexing with a high diversity library. Optimal PhiX loading will vary based on the sequencer and sequencer software; please contact Illumina technical support for recommendations.

Sequencing Parameters:

Libraries generated with this workflow are suitable for any read length but increased read lengths will require greater amounts of adapter trimming for the shorter library fragments. For most applications, 100 base paired-end (PE) reads are enough to generate substantial amounts of high-quality data for genome-wide coverage. The sequencing depth will be dependent on the genome size, genome coverage, and site coverage required. Generally, aiming for 10X coverage per CpG site is recommended. Sites with more than 10X coverage have a higher reliability in 5mC calling, but certain sites may have less coverage due to gene copy number, variability in library preparation, or clustering efficiency during sequencing. Using 100 bp PE sequencing, we recommend at least 500 million reads for human cfDNA WGBS at 10X CpG coverage, and at least 400 million reads for mouse cfDNA WGBS at 10X CpG coverage.

Adapter Trimming:

Libraries should be trimmed to remove any adapter sequence. No other trimming is required. Use the following sequences to trim the adapters:

Read 1: AGATCGGAAGAGCACACGTCTGAACTCCAGTCA

Read 2: AGATCGGAAGAGCGTCGTGTAGGGAAAGAGTGT

Alignment Parameters:

Libraries prepared with this kit are directional. As such, the original-top and original-bottom strands will be represented. We recommend aligning to reference genome hg38 for human cfDNA WGBS, and reference genome mm10 for mouse cfDNA WGBS.

Ordering Information

Product Description	Catalog No.	Size
Zymo-Seq™ Cell Free DNA WGBS Library Kit	D5462 D5463	24 preps. 96 preps.

Individual Kit Components	Catalog No.	Amount
EZ DNA Methylation-Lightning™ Kit	D5030T	10 rxns
	D5030	50 rxns
	D5031	200 rxns
Lightning Conversion Reagent	D5030-1	1.5 mL
	D5032-1	15 mL
M-Binding Buffer	D5001-3	20 mL
	D5002-3	80 mL
	D5049-3	100 mL
M-Wash Buffer (concentrate)	D5001-4	6 mL
	D5002-4	24 mL
	D5007-4	36 mL
L-Desulphonation Buffer	D5030-5	10 mL
	D5031-5	40 mL
	D5046-5	80 mL
DNA Elution Buffer	D3004-4-1	1 mL
	D3004-4-4	4 mL
	D3004-4-16	16 mL
Zymo-Spin IC™ Columns	C1004-50	50 pack
	C1004-250	250 pack
Collection Tubes	C1001-50	50 pack
	C1001-500	500 pack
	C1001-1000	1000 pack
DNA Wash Buffer (concentrate)	D4003-2-6	6 mL
	D4003-2-24	24 mL
	D4003-2-48	48 mL
<i>E. coli</i> Non-Methylated Genomic DNA	D5016	5 µg/20 µL
Zymo-Seq™ UDI Primer Sets	D3008	12 indexes
	D3096	96 indexes

Complete Your Workflow

- ✓ For extraction of high-quality circulating cell-free DNA from up to 10 mL of serum or plasma, up to 5 mL of saliva, and up to 1 mL of amniotic and cerebrospinal fluid:

Quick-cfDNA Serum & Plasma Kit

Cat. No. D4076

Recover DNA \geq 100 bp; 50 preps

- ✓ For extraction of both circulating cell-free DNA and cell-free RNA including protein-bound, exosomal, microRNA, and other small RNA from serum, plasma, and other biological fluid:

Quick-cfDNA/cfRNA Serum & Plasma Kit

Cat. No. R1072

Recover DNA \geq 50 bp and RNA \geq 17 nt; 50 preps

- ✓ For an all-in-one RRBS library prep kit perfect for DNA methylation profiling at single-nucleotide resolution in CpG-rich regions of the genome including CpG islands, promoters, and gene bodies:

Zymo-Seq RRBS Library Kit

Cat. No. D5460

24 preps

Cat. No. D5461

48 preps

- ✓ For epigenetic NGS analysis solutions, contact our Services Department by phone at (949)-679-1190 Ext. 2, by email at services@zymoresearch.com, or on our website at <https://www.zymoresearch.com/pages/services>:

Next Generation Sequencing Services

Targeted Bisulfite Sequencing

Evaluate site-specific DNA methylation

Genome-Wide DNA Methylation

RRBS, Methyl-MiniSeq, and Methyl-MaxiSeq

ChIP-Seq Service

Protein/DNA interactions and histone modifications

Human Epigenetic Age

Quantify epigenetic age with Human DNAge

Mouse Epigenetic Age

Quantify biological age across various tissues



**100% satisfaction guarantee on all Zymo Research products,
or your money back.**

Zymo Research is committed to simplifying your research with quality products and services. If you are dissatisfied with this product for any reason, please call 1(888) 882-9682.

Integrity of kit components is guaranteed for up to one year from date of purchase. Reagents are routinely tested on a lot-to-lot basis to ensure they provide the highest performance and reliability.

This product is for research use only and should only be used by trained professionals. It is not for use in diagnostic procedures. Some reagents included with this kit are irritants. Wear protective gloves and eye protection. Follow the safety guidelines and rules enacted by your research institution or facility.

TM Trademarks of Zymo Research Corporation

EZ DNA Methylation-LightningTM Kit technologies are patent pending.

TapeStation[®] and Bioanalyzer[®] are registered trademarks of Agilent Technologies, Inc.

Illumina[®], NextSeq[®], and NovaSeq[®] are registered trademarks of Illumina, Inc.

KAPA[®] is a registered trademark of Roche Molecular Systems, Inc.

NanoDrop[®] and Qubit[®] are registered trademarks of Thermo Fisher Scientific, Inc.



ZYMO RESEARCH

The **BEAUTY** of **SCIENCE** is to Make Things **SIMPLE**®



tech@zymoresearch.com



www.zymoresearch.com



Toll Free: (888) 882-9682