



# SZABO SCANDIC

Part of Europa Biosite

## Produktinformation



Forschungsprodukte & Biochemikalien



Zellkultur & Verbrauchsmaterial



Diagnostik & molekulare Diagnostik



Laborgeräte & Service

Weitere Information auf den folgenden Seiten!  
See the following pages for more information!



### Lieferung & Zahlungsart

siehe unsere [Liefer- und Versandbedingungen](#)

### Zuschläge

- Mindermengenzuschlag
- Trockeneiszuschlag
- Gefahrgutzuschlag
- Expressversand

### SZABO-SCANDIC HandelsgmbH

Quellenstraße 110, A-1100 Wien

T. +43(0)1 489 3961-0

F. +43(0)1 489 3961-7

[mail@szabo-scandic.com](mailto:mail@szabo-scandic.com)

[www.szabo-scandic.com](http://www.szabo-scandic.com)

[linkedin.com/company/szaboscandic](https://www.linkedin.com/company/szaboscandic) 



ZYMO RESEARCH

DNA  
Purification  
MADE SIMPLE  
Made Simple™

# Quick-DNA™ Fecal/Soil Microbe Microprep Kit

DNA from fecal, soil, and microbial samples.

## Highlights

- Rapid method for the isolation of inhibitor-free, PCR-quality DNA (up to 5 µg/prep) from microbes including Gram positive and negative bacteria, fungi, algae, protozoa, etc. in fecal and soil samples in as little as 20 minutes.
- State-of-the-art, ultra-high density **BashingBeads™** are fracture resistant and chemically inert.
- Omits the use of organic denaturants as well as proteinases.

Catalog Numbers:  
D6012



Scan with your smart-phone camera to  
view the online protocol/video.



[tech@zymoresearch.com](mailto:tech@zymoresearch.com)



[www.zymoresearch.com](http://www.zymoresearch.com)



Toll Free: (888) 882-9682

# **Table of Contents**

---

<b>Product Contents .....</b>	<b>01</b>
<b>Specifications.....</b>	<b>02</b>
<b>Product Description.....</b>	<b>03</b>
<b>Protocol .....</b>	<b>06</b>
<b>Appendix.....</b>	<b>08</b>
<b>Ordering Information .....</b>	<b>09</b>
<b>Guarantee .....</b>	<b>11</b>

# Product Contents

<b>Quick-DNA™ Fecal/Soil Microbe Microprep Kit</b>	<b>D6012 (50 Preps.)</b>	<b>Storage Temperature</b>
ZR BashingBead™ Lysis Tubes (0.1 & 0.5 mm)	50	Room Temp.
BashingBead™ Buffer	40 ml	Room Temp.
Genomic Lysis Buffer <sup>1</sup>	100 ml	Room Temp.
DNA Pre-Wash Buffer <sup>2</sup>	15 ml	Room Temp.
g-DNA Wash Buffer	50 ml	Room Temp.
DNA Elution Buffer	10 ml	Room Temp.
Prep Solution	30 ml	Room Temp.
Zymo-Spin™ III-F Filters	50	Room Temp.
Zymo-Spin™ III-μHRC Filters	50	Room Temp.
Zymo-Spin™ IC Columns	50	Room Temp.
Collection Tubes	200	Room Temp.
Instruction Manual	1	-

1 For optimal performance, add beta-mercaptoethanol to 0.5% (v/v) *i.e.*, 500 µl per 100 ml.

2 A precipitate may have formed in the **DNA Pre-Wash Buffer** during shipping. To completely resuspend the buffer, incubate the bottle at 30–37°C for 30 minutes and mix by inversion. **DO NOT MICROWAVE.**

# Specifications

- **Format** – Bead Beating, Spin Column.
- **Sample Sources** – Host, bacterial, fungal, algal, protozoan, viral DNA can be isolated from up to 50 mg of feces or up to 250 mg of soil. The amount of soil sample processed will vary depending on the composition of the sample: process more soil material for wet muddy samples and less for dry sandy samples. Additionally, water<sup>1</sup> or 10 – 20 mg (wet weight) fungal/bacterial cells<sup>2</sup> can be processed.
- **DNA Purity** – High quality, inhibitor-free DNA is eluted with **DNA Elution Buffer** suitable for the amplification of bacterial, protist, and/or mammalian templates ( $A_{260}/A_{280} > 1.8$ )
- **DNA Size Limits** – Capable of recovering genomic DNA up to and above 40 kb. In most instances, mitochondrial DNA and viral DNA (if present) will also be recovered.
- **DNA Recovery** – Typically, up to 5 µg total DNA is eluted into 20 µl **DNA Elution Buffer** per sample.
- **Equipment** – Microcentrifuge, vortex, cell disrupter/disrupter (recommended).

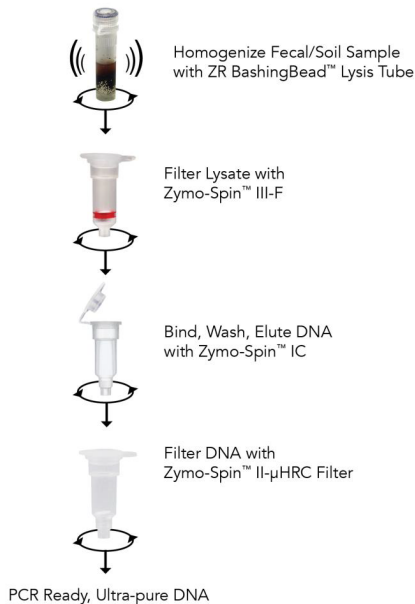
---

<sup>1</sup> For water samples, use desired filter to collect sample (not provided) and cut the filter into small pieces before adding to the lysis tube.

<sup>2</sup> This equates to approximately  $2 \times 10^8$  bacterial cells and  $2 \times 10^7$  yeast cells.

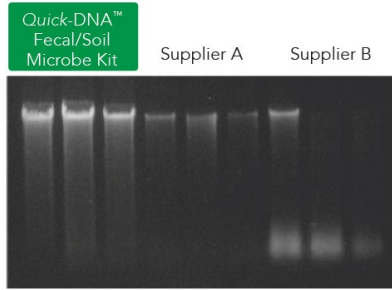
# Product Description

The **Quick-DNA™ Fecal/Soil Microbe Microprep Kit** is designed for the simple, rapid isolation of inhibitor-free, PCR-quality DNA from a variety of fecal (including humans, birds, rats, mice, cattle, etc.) and soil (including clay, sandy, silty, peaty, chalky, and loamy soils) samples. The kit can be used to successfully isolate DNA from tough-to-lyse Gram positive and negative bacteria, fungi, algae, protozoa, etc. that inhabit fecal and soil samples. The procedure is easy and can be completed in as little as 15 minutes: fecal samples ( $\leq 50$  mg each) or soil samples ( $\leq 250$  mg each) are added directly to a **ZR BashingBead™ Lysis Tube (0.1 & 0.5 mm)** and rapidly and efficiently lysed by bead beating without the use of organic denaturants or proteinases. The DNA is then isolated using our Zymo-Spin™ Technology, which is subsequently filtered to remove humic acids/polyphenols that inhibit PCR. The DNA is ideal for downstream molecular-based applications including PCR, arrays, genotyping, etc. A schematic of the **Quick-DNA™ Fecal/Soil Microbe Microprep Kit** procedure is shown below.

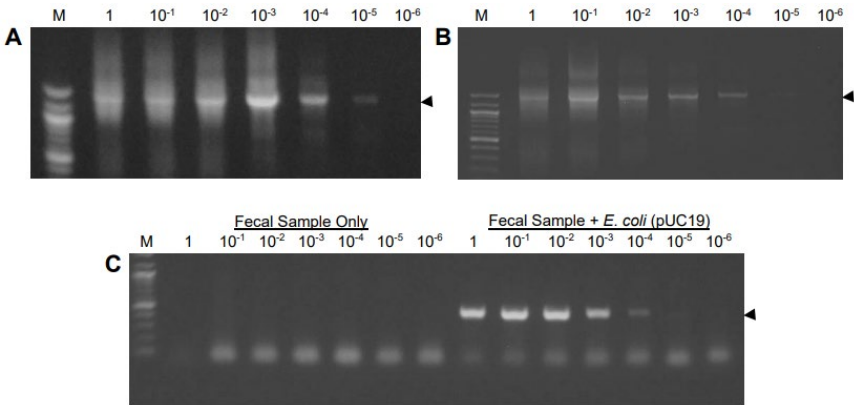


**DNA/RNA Shield™ (R1100-50, R1100-250)** can be used to stabilize nucleic acids and inactivate infectious agents in a variety of samples, without the need for reagent removal.

## Fecal DNA Isolation

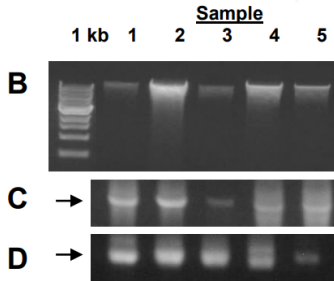
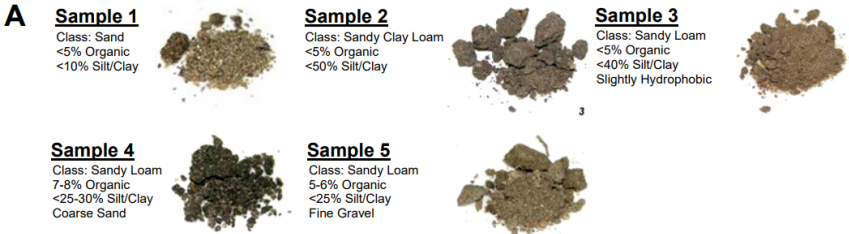


Comparison of DNA yields from rat feces using the **Quick-DNA™ Fecal/Soil Microbe Kit** and kits from suppliers Q1 and Q2. Equivalent amounts of feces were processed using each kit and then equal volumes of eluted DNA were analyzed in a 0.8% (w/v) agarose/ethidium bromide gel. Samples were processed in triplicate.

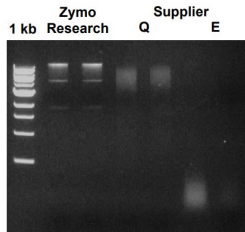


PCR of DNAs from rat and human fecal samples isolated with the **Quick-DNA™ Fecal/Soil Microbe Kit**. **Panels A and B** show the results of PCR with DNA isolated from rat and human fecal samples, respectively, using primers specific for prokaryotic 16S rRNA. **Panel C** shows the results of PCR of DNA isolated from human feces with and without the addition of *E. coli* containing pUC19 plasmid DNA (indicated at the top of the image) using primers specific for the pUC19 sequence. In each case, amplicons were analyzed in a 1.5% (w/v) agarose / ethidium bromide gel using a UV imager. Numbers above each lane of the gel images are the volumetric equivalent (in  $\mu$ l) of eluted DNA (100  $\mu$ l) used for PCR. Arrows mark the relative migration of amplicons in the gels, and M is a 100 bp DNA ladder (NEB).

## Soil Microbe DNA Isolation



The **Quick-DNA™ Fecal/Soil Microbe Kit** can be used to isolate high quality DNA from a variety of soil types which yields robust products following PCR. **Panel A:** Physical characteristics of sampled soils (1-5) (Ref. 1). **Panel B:** Microbial DNA was isolated from soil samples (1-5) using the **Quick-DNA™ Fecal/Soil Microbe Kit**. Approximately 10% of the eluted DNA was then separated in a 0.8% (w/v) agarose/ethidium bromide gel. **Panels C and D** show the results of PCR of microbial DNA isolated from the samples with primers specific for prokaryotic 16S rRNA (**C**) or eukaryotic rRNA (**D**). In the figures, the 1 kb size marker (NEB) is as indicated and the arrows show the prokaryotic 16S rRNA and eukaryotic rRNA PCR products.



DNA isolated from *Saccharomyces cerevisiae* (strain TMY18) using the **Quick-DNA™ Fecal/Soil Microbe Kit** is high-quality and structurally intact. Equivalent amounts of yeast were processed using the **Quick-DNA™ Fecal/Soil Microbe Kit** or the kits from suppliers Q and E. Equal volumes of eluted DNA were then analyzed in a 0.8% (w/v) agarose/ethidium bromide gel. The size marker is a 1 kb ladder (NEB).

### References:

1. Soil and Plant Laboratory, Inc. P.O. Box 11744, Santa Ana, CA 92711



# Protocol

For optimal performance, add beta-mercaptoethanol (user supplied) to the **Genomic Lysis Buffer** to a final dilution of 0.5% (v/v) *i.e.*, 500 µl per 100 ml.

1. Add  $\leq 50$  mg of fecal sample or  $\leq 250$  mg of soil sample to a **ZR BashingBead™ Lysis Tube (0.1 & 0.5 mm)**. Add 750 µl **BashingBead™ Buffer** to the tube and cap tightly.

**Note:** Alternatively, add water sample<sup>1</sup> or 10 – 20 mg (wet weight) bacterial/bacterial cells<sup>2</sup> that have been resuspended in up to 200 µl of water or isotonic buffer (e.g., PBS) to a ZR BashingBead™ Lysis Tube.

2. Secure in a bead beater fitted with a 2 ml tube holder assembly and process using optimized beat beating conditions (speed and time) for your device (see Appendix).
3. Centrifuge the **ZR BashingBead™ Lysis Tube (0.1 & 0.5 mm)** in a microcentrifuge at  $\geq 10,000 \times g$  for 1 minute.
4. Transfer up to 400 µl supernatant to a **Zymo-Spin™ III-F Filter** in a **Collection Tube** and centrifuge at  $8,000 \times g$  for 1 minute. Discard the Zymo-Spin™ III-F Filter.
5. Add 1,200 µl of **Genomic Lysis Buffer** to the filtrate in the **Collection Tube** from Step 4. Mix well.
6. Transfer 800 µl of the mixture from Step 5 to a **Zymo-Spin™ IC Column**<sup>3</sup> in a **Collection Tube** and centrifuge at  $10,000 \times g$  for 1 minute.
7. Discard the flow through from the **Collection Tube** and repeat Step 6.

---

<sup>1</sup> For water samples, filter using desired non-silica based filter (not provided). Cut the filter into small pieces before adding to the lysis tube.

<sup>2</sup> This equates to approximately  $2 \times 10^8$  bacterial cells and  $2 \times 10^7$  yeast cells.

<sup>3</sup> The **Zymo-Spin™ IC Column** has a maximum capacity of 800 µl.

8. Add 200  $\mu\text{l}$  **DNA Pre-Wash Buffer** to the **Zymo-Spin™ IC Column** in a new **Collection Tube** and centrifuge at 10,000 x *g* for 1 minute.
9. Add 500  $\mu\text{l}$  **g-DNA Wash Buffer** to the **Zymo-Spin™ IC Column** and centrifuge at 10,000 x *g* for 1 minute.
10. Transfer the **Zymo-Spin™ IC Column** to a clean 1.5 ml microcentrifuge tube and add 20  $\mu\text{l}$  **DNA Elution Buffer** directly to the column matrix. Centrifuge at 10,000 x *g* for 30 seconds to elute the DNA<sup>4,5</sup>.
11. Place a **Zymo-Spin™ II- $\mu\text{HRC}$  Filter** in a clean **Collection Tube** and add 600  $\mu\text{l}$  **Prep Solution**. Centrifuge at 8,000 x *g* for 3 minutes.
12. Transfer the eluted DNA to a prepared **Zymo-Spin™ II- $\mu\text{HRC}$  Filter** in a clean 1.5 ml microcentrifuge tube and centrifuge at exactly 16,000 x *g* for 3 minutes.

The filtered DNA is now suitable for PCR and other downstream applications.

---

4 In some cases a brown-colored pellet may form at the bottom of the tube after centrifugation. Avoid this pellet when collecting the eluted DNA.

5 If fungi or bacterial cultures were sampled, the DNA is now suitable for PCR as well as other downstream applications.

# Appendix

## Optimized Lysis Protocols for Bead-Beating

The following conditions with different mechanical lysis machines were validated with minimum bias using the **ZymoBIOMICS™ Microbial Community Standard**.

1

### **Vortex Genie® with 2 ml BashingBead™ Tubes**

Recommended for ease of use and accessibility

Use Microtube Adaptor (Scientific Industries, Inc. Cat. No. S5001-7)

1. 40 minutes of continuous bead beating (max of 18 tubes per adaptor)

2

### **Bertin Precellys® Evolution with 2 ml BashingBead™ Tubes**

Recommended for ease of use and ultra-high speed

1. 1 minute on at 9,000 rpm
2. 2 minutes rest
3. Repeat cycle 4 times for a total of 4 minutes of bead beating

3

### **MP Fastprep®-24 with 2 ml BashingBead™ Tubes**

Maximum of 20 tubes. The weight of >20 tubes may cause a system error

1. 1 minute on at max speed
2. 5 minutes rest
3. Repeat cycle 5 times for a total of 5 minutes of bead beating

4

### **Omni Bead Ruptor® Elite with 2 ml BashingBead™ Tubes**

1. 1 minute on at 6 m/s
2. 5 minutes rest
3. Repeat cycle 3 times for a total of 3 minutes of bead beating

5

### **Biospec Mini-BeadBeater-16 with 2 ml BashingBead™ Tubes**

1. 1 minute at maximum speed
2. 5 minutes rest
3. Repeat cycle 5 times for a total of 5 minutes of bead beating

6

### **Biospec Mini-BeadBeater-96 with 2 ml BashingBead™ Tubes**

1. 5 minutes on at Max RPM
2. 5 minutes rest
3. Repeat cycle 4 times for a total of 20 minutes of bead beating

7

### **Biospec Mini-BeadBeater-96 with 96 well BashingBead™ Lysis Rack**

1. 5 minutes on at Max RPM
2. 5 minutes rest
3. Repeat cycle 8 times for a total of 40 minutes of bead beating

X

### **TissueLyser II**

No tested conditions yielded accurate profiles. This device is not validated by Zymo Research for microbiome research.

X

### **TissueLyser LT**

No tested conditions yielded accurate profiles. This device is not validated by Zymo Research for microbiome research.

X

### **Retsch Mixer Mill MM 400**

No tested conditions yielded accurate profiles. This device is not validated by Zymo Research for microbiome research.

# Ordering Information

Product Description	Catalog No.	Size
<b>Quick-DNA™ Fecal/Soil Microbe Microprep Kit</b>	D6012	50 Preps.
<b>Quick-DNA™ Fecal/Soil Microbe Miniprep Kit</b>	D6010	50 Preps.
<b>Quick-DNA™ Fecal/Soil Microbe Midiprep Kit</b>	D6110	25 Preps.
<b>Quick-DNA™ Fecal/Soil 96 Kit</b>	D6011	2 x 96 Preps.

Individual Kit Components	Catalog No.	Amount
<b>ZR BashingBead™ Lysis Tubes (0.1 &amp; 0.5 mm)</b>	S6012-50	50 Tubes
<b>BashingBead™ Buffer</b>	D6001-3-40	40 ml
<b>Genomic Lysis Buffer</b>	D3004-1-100	100 ml
<b>DNA Pre-Wash Buffer</b>	D3004-5-15	15 ml
<b>g-DNA Wash Buffer</b>	D6010-2-50	50 ml
<b>DNA Elution Buffer</b>	D3004-4-10	10 ml
<b>Prep Solution</b>	D6035-1-30	30 ml
<b>Zymo-Spin™ III-F Filters</b>	C1057-50	50 Pack
<b>Zymo-Spin™ IC Columns</b>	C1004-50	50 Pack
<b>OneStep™ PCR Inhibitor Removal Kit</b>	D6030	50 Preps.
<b>Collection Tubes</b>	C1001-50 C1001-500 C1001-1000	50 Pack 500 Pack 1,000 Pack

Lysis Instruments	Catalog No.	Amount
<b>Horizontal Microtube Holder</b>	S5001-7	1 Unit
<b>Vortex-Genie® 2, 120V</b>	S5001	1 Unit
<b>Vortex-Genie® 2, 230V</b>	S5002	1 Unit
<b>Digital Vortex-Genie® 2, 120 V</b>	S5003	1 Unit
<b>Digital Vortex-Genie® 2, 230 V</b>	S5004	1 Unit

The Vortex-Genie® 2 paired with the Horizontal Microtube Holder has been validated for efficient microbial lysis with the ZR BashingBead Lysis Tubes (0.1 & 0.5 mm). See the Appendix for more details.



**100% satisfaction guarantee on all Zymo Research products,  
or your money back.**

Zymo Research is committed to simplifying your research with quality products and services. If you are dissatisfied with this product for any reason, please call 1(888) 882-9682.

---

Integrity of kit components is guaranteed for up to one year from date of purchase.  
Reagents are routinely tested on a lot-to-lot basis to ensure they provide the highest performance and reliability.

This product is for research use only and should only be used by trained professionals. It is not for use in diagnostic procedures. Some reagents included with this kit are irritants. Wear protective gloves and eye protection. Follow the safety guidelines and rules enacted by your research institution or facility.

<sup>TM</sup> Trademarks of Zymo Research Corporation  
Other trademarks: Vortex Genie<sup>®</sup> (Scientific Industries, Inc.), Precellys<sup>®</sup> (Bertin Instruments), Fastprep-24<sup>TM</sup> (MP Biomedicals), Bead Ruptor<sup>®</sup> (Omni International).



ZYMO RESEARCH

The **BEAUTY** of **SCIENCE** is to Make Things **SIMPLE**®



[tech@zymoresearch.com](mailto:tech@zymoresearch.com)



[www.zymoresearch.com](http://www.zymoresearch.com)



Toll Free: (888) 882-9682